

## ARG65280 anti-LY6E antibody

Package: 100 µg  
Store at: -20°C

### Summary

Product Description	Goat Polyclonal antibody recognizes LY6E
Tested Reactivity	Ms
Tested Application	FACS, ICC/IF, IHC
Specificity	Reported variants represent identical protein: NP_002337.1, NP_001120685.1
Host	Goat
Clonality	Polyclonal
Isotype	IgG
Target Name	LY6E
Species	Mouse
Immunogen	SCQEKDHYCIT
Conjugation	Un-conjugated
Alternate Names	RIGE; Lymphocyte antigen 6E; RIG-E; Retinoic acid-induced gene E protein; TSA-1; Ly-6E; Thymic shared antigen 1; SCA-2; SCA2; Stem cell antigen 2

### Application Instructions

Application table	Application	Dilution
	FACS	10 µg/ml
	ICC/IF	10 µg/ml
	IHC	Assay - dependent
Application Note	* The dilutions indicate recommended starting dilutions and the optimal dilutions or concentrations should be determined by the scientist.	

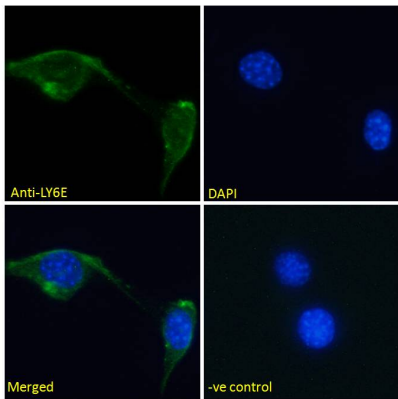
### Properties

Form	Liquid
Purification	Purified from goat serum by antigen affinity chromatography.
Buffer	Tris saline (pH 7.3), 0.02% Sodium azide and 0.5% BSA.
Preservative	0.02% Sodium azide
Stabilizer	0.5% BSA
Concentration	0.5 mg/ml
Storage instruction	For continuous use, store undiluted antibody at 2-8°C for up to a week. For long-term storage, aliquot and store at -20°C or below. Storage in frost free freezers is not recommended. Avoid repeated freeze/thaw cycles. Suggest spin the vial prior to opening. The antibody solution should be gently mixed before use.

Bioinformation

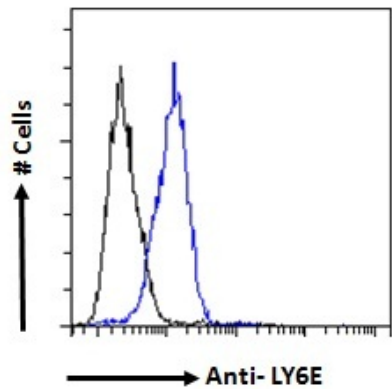
Database links	<a href="#">GeneID: 17069 Mouse</a> <a href="#">Swiss-port # Q64253 Mouse</a>
Gene Symbol	Ly6e
Gene Full Name	lymphocyte antigen 6 complex, locus E
Function	Involved in T-cell development. [UniProt]
Research Area	Cell Biology and Cellular Response antibody
Calculated Mw	14 kDa

Images



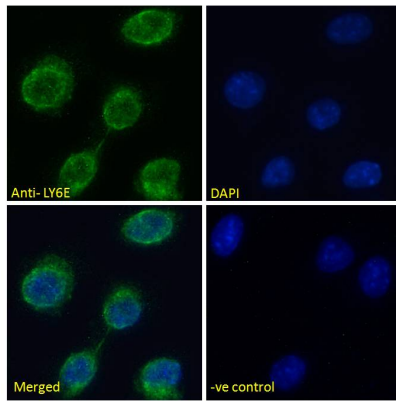
**ARG65280 anti-LY6E antibody ICC/IF image**

Immunofluorescence: Paraformaldehyde fixed NIH/3T3 cells permeabilized with 0.15% Triton. Cells were stained with ARG65280 anti-LY6E antibody (green) at 10 µg/ml dilution for 1 hour. DAPI (blue) for nuclear staining. Negative control: Unimmunized goat IgG (green) at 10 µg/ml dilution.



**ARG65280 anti-LY6E antibody FACS image**

Flow Cytometry: Paraformaldehyde-fixed NIH/3T3 cells permeabilized with 0.5% Triton. Cells were stained with ARG65280 anti-LY6E antibody (blue line) at 10 µg/ml dilution for 1 hour, followed by incubation with Alexa FluorR 488 labelled secondary antibody. IgG control: Unimmunized goat IgG (black line).



#### ARG65280 anti-LY6E antibody ICC/IF image

Immunofluorescence: Paraformaldehyde fixed L929 cells permeabilized with 0.15% Triton. Cells were stained with ARG65280 anti-LY6E antibody (green) at 10 µg/ml dilution for 1 hour. DAPI (blue) for nuclear staining. Negative control: Unimmunized goat IgG (green) at 10 µg/ml dilution.