

ARG65301 anti-PSMA4 antibody

Package: 100 µg
Store at: -20°C

Summary

Product Description	Goat Polyclonal antibody recognizes PSMA4
Tested Reactivity	Hu, Ms, Rat
Predict Reactivity	Dog
Tested Application	WB
Specificity	This antibody is expected to recognize both reported isoforms (NP_002780.1; NP_001096138.1). Reported variants represent identical protein: NP_002780.1, NP_001096137.1
Host	Goat
Clonality	Polyclonal
Isotype	IgG
Target Name	PSMA4
Species	Human
Immunogen	C-SDANVLTNELR
Conjugation	Un-conjugated
Alternate Names	Proteasome component C9; PSC9; Proteasome subunit alpha type-4; HC9; Proteasome subunit L; HsT17706; Multicatalytic endopeptidase complex subunit C9; Macropain subunit C9; EC 3.4.25.1

Application Instructions

Application table	Application	Dilution
	WB	0.3 - 1 µg/ml
Application Note	WB: Recommend incubate at RT for 1h. * The dilutions indicate recommended starting dilutions and the optimal dilutions or concentrations should be determined by the scientist.	

Properties

Form	Liquid
Purification	Purified from goat serum by antigen affinity chromatography.
Buffer	Tris saline (pH 7.3), 0.02% Sodium azide and 0.5% BSA.
Preservative	0.02% Sodium azide
Stabilizer	0.5% BSA
Concentration	0.5 mg/ml
Storage instruction	For continuous use, store undiluted antibody at 2-8°C for up to a week. For long-term storage, aliquot and store at -20°C or below. Storage in frost free freezers is not recommended. Avoid repeated freeze/thaw cycles. Suggest spin the vial prior to opening. The antibody solution should be gently mixed

before use.

Note

For laboratory research only, not for drug, diagnostic or other use.

Bioinformation

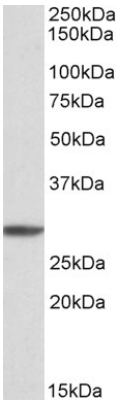
Background

The proteasome is a multicatalytic proteinase complex with a highly ordered ring-shaped 20S core structure. The core structure is composed of 4 rings of 28 non-identical subunits; 2 rings are composed of 7 alpha subunits and 2 rings are composed of 7 beta subunits. Proteasomes are distributed throughout eukaryotic cells at a high concentration and cleave peptides in an ATP/ubiquitin-dependent process in a non-lysosomal pathway. An essential function of a modified proteasome, the immunoproteasome, is the processing of class I MHC peptides. This gene encodes a member of the peptidase T1A family, that is a 20S core alpha subunit. Three alternatively spliced transcript variants encoding different isoforms have been found for this gene. [provided by RefSeq, Jul 2008]

Research Area
Calculated Mw

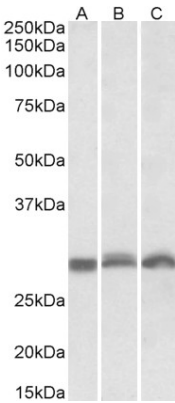
Cell Biology and Cellular Response antibody
29 kDa

Images



ARG65301 anti-PSMA4 antibody WB image

Western Blot: K562 cell lysate (35µg protein in RIPA buffer) stained with ARG65301 anti-PSMA4 antibody (1µg/ml).



ARG65301 anti-PSMA4 antibody WB image

Western Blot: NIH3T3 (A), Mouse Spleen (B), Rat Spleen (C)) lysates (35µg protein in RIPA buffer) stained with ARG65301 anti-PSMA4 antibody (0.3µg/ml)