

ARG65323 Mouse IgG1 Kappa Isotype Control antibody [MOPC-21]

Package: 100 µg
Store at: -20°C

Summary

Product Description	Mouse Monoclonal antibody [MOPC-21] as a negative control antibody for Mouse IgG1 Kappa
Species Does Not React With	Hu, Rat
Tested Application	Control, ELISA, FACS, ICC/IF, IHC-Fr, IHC-P, IP, WB
Specificity	This mouse IgG1 kappa monoclonal antibody (clone MOPC-21) has unknown specificity and was chosen as an isotype control after screening on variety of resting, activated, live and fixed rat and human tissues. In addition, this antibody is suitable for control experiments when performing cell surface staining as well as intracellular staining.
Host	Mouse
Clonality	Monoclonal
Clone	MOPC-21
Isotype	IgG1, kappa
Target Name	Mouse IgG1 Kappa
Conjugation	Un-conjugated

Application Instructions

Application table	Application	Dilution
	Control	Assay-dependent
	ELISA	Assay-dependent
	FACS	Assay-dependent
	ICC/IF	Assay-dependent
	IHC-Fr	Assay-dependent
	IHC-P	Assay-dependent
	IP	Assay-dependent
	WB	Assay-dependent

Application Note

This isotype control antibody is intended as Mouse IgG2b isotype control for the analysis to establish the amount of non-specific antibody binding. Using the same concentration of this isotype control antibody as the recommended working concentration of the antigen-specific antibody. In addition, when working with prediluted antibodies, dilute the isotype control to the same concentration as is the concentration of the antigen-specific antibody in the prediluted antibody solution using in the experiment. If under particular experimental conditions the background signal of the isotype control is too high (usually when working concentrations of used antibodies are above 10 µg per ml of incubation mixture), change the conditions of your experiment to reduce the background.

* The dilutions indicate recommended starting dilutions and the optimal dilutions or concentrations should be determined by the scientist.

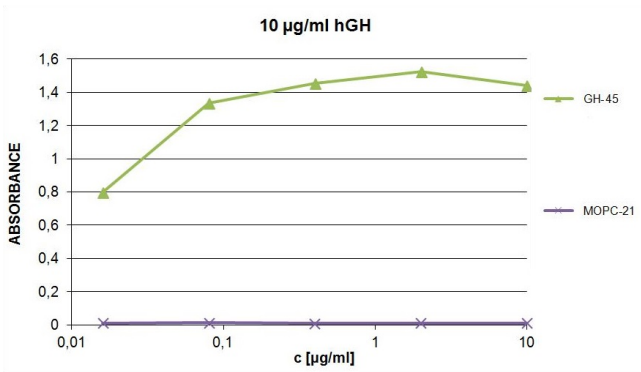
Properties

Form	Liquid
Purification	Purified from cell culture supernatant by protein-G affinity chromatography.
Purity	> 95% (by SDS-PAGE)
Buffer	PBS (pH 7.4) and 15 mM Sodium azide
Preservative	15 mM Sodium azide
Concentration	1 mg/ml
Storage instruction	For continuous use, store undiluted antibody at 2-8°C for up to a week. For long-term storage, aliquot and store at -20°C or below. Storage in frost free freezers is not recommended. Avoid repeated freeze/thaw cycles. Suggest spin the vial prior to opening. The antibody solution should be gently mixed before use.
Note	For laboratory research only, not for drug, diagnostic or other use.

Bioinformation

Background	The specificity of staining by monoclonal antibodies to target antigens should be verified by establishing the amount of non-specific antibody binding. Especially at higher concentration (more than 15 µg/ml) the antibody staining usually has consignable background. To this end a non-reactive immunoglobulin of the same isotype is included as a negative control for each specific monoclonal antibody used in a particular immunoassay. The monoclonal antibody MOPC-21, generated against an undefined antigen, does not react specifically with rat and human samples, and hence all the background that could be observed when working with this antibody would be a result of general nonspecific interactions between an mouse IgG1 molecule and the respective sample under the particular conditions. This shall help the customer to set up the experimental conditions so that the nonspecific binding of any antibody is abolished.
Research Area	Controls and Markers antibody

Images



ARG65323 Mouse IgG1 Kappa Isotype Control antibody [MOPC-21]
Control image

ELISA: Human growth hormone using [ARG62995](#) anti-GH1 / Growth hormone antibody [GH-45]. Compared with ARG65323 Mouse IgG1 Kappa Isotype Control antibody [MOPC-21].