

ARG65337 Mouse IgG1 Kappa Isotype Control antibody [MOPC-21] (PE)

Package: 100 µg
Store at: 4°C

Summary

Product Description	PE-conjugated Mouse Monoclonal antibody [MOPC-21] as a negative control antibody for Mouse IgG1 Kappa
Species Does Not React With	Hu, Rat
Tested Application	FACS
Specificity	This mouse IgG1 kappa monoclonal antibody (clone MOPC-21) has unknown specificity and was chosen as an isotype control after screening on variety of resting, activated, live and fixed rat and human tissues.
Host	Mouse
Clonality	Monoclonal
Clone	MOPC-21
Isotype	IgG1, kappa
Target Name	Mouse IgG1 Kappa
Conjugation	PE
Alternate Names	IgG1; Igh-4; VH7183

Application Instructions

Application table	Application	Dilution
	FACS	8 - 10 µg/ml
Application Note	* The dilutions indicate recommended starting dilutions and the optimal dilutions or concentrations should be determined by the scientist.	

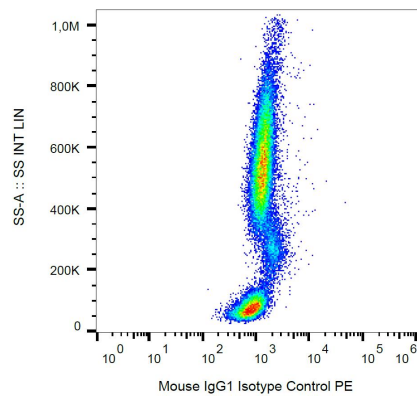
Properties

Form	Liquid
Purification Note	The purified antibody is conjugated with R-Phycoerythrin (PE) under optimum conditions. The conjugate is purified by size-exclusion chromatography.
Buffer	PBS, 15 mM Sodium azide and 0.2% (w/v) high-grade protease free BSA
Preservative	15 mM Sodium azide
Stabilizer	0.2% (w/v) high-grade protease free BSA
Concentration	0.1 mg/ml
Storage instruction	Aliquot and store in the dark at 2-8°C. Keep protected from prolonged exposure to light. Avoid repeated freeze/thaw cycles. Suggest spin the vial prior to opening. The antibody solution should be gently mixed before use.
Note	For laboratory research only, not for drug, diagnostic or other use.

Bioinformation

Gene Symbol	Ighg1
Gene Full Name	immunoglobulin heavy constant gamma 1 (G1m marker)
Research Area	Controls and Markers antibody; Gene Regulation antibody; Immune System antibody

Images



ARG65337 Mouse IgG1 Kappa Isotype Control antibody [MOPC-21] (PE) FACS image

Flow Cytometry: Human peripheral blood stained with ARG65337 Mouse IgG1 Kappa Isotype Control antibody [MOPC-21] (PE) at 9 µg/ml dilution.