

## ARG65418 anti-CD103 / Integrin alpha E antibody [Ber-ACT8] (FITC)

Package: 50 tests  
Store at: 4°C

### Summary

Product Description	FITC-conjugated Mouse Monoclonal antibody [Ber-ACT8] recognizes CD103 / Integrin alpha E
Tested Reactivity	Hu, NHuPrm
Tested Application	FACS
Specificity	The clone Ber-ACT8 recognizes CD103 (alpha E integrin), a type I transmembrane glycoprotein primarily found on intestinal intraepithelial lymphocytes. HLDA V; WS Code A067
Host	Mouse
Clonality	Monoclonal
Clone	Ber-ACT8
Isotype	IgG1
Target Name	CD103 / Integrin alpha E
Species	Human
Immunogen	HTLV-1 induced human T cell line MAPS16
Conjugation	FITC
Alternate Names	CD103; HUMINAE; Integrin alpha-E; Mucosal lymphocyte 1 antigen; CD antigen CD103; HML-1 antigen; Integrin alpha-IEL

### Application Instructions

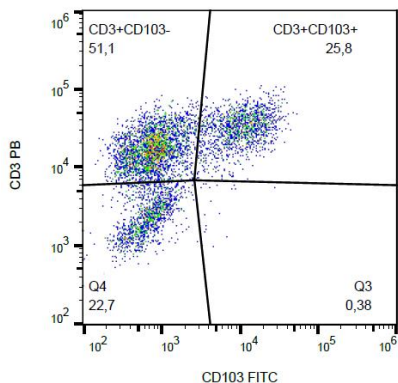
Application table	Application	Dilution
	FACS	4 µl / 10 <sup>6</sup> cells
Application Note	* The dilutions indicate recommended starting dilutions and the optimal dilutions or concentrations should be determined by the scientist.	

### Properties

Form	Liquid
Purification Note	The purified antibody is conjugated with Fluorescein isothiocyanate (FITC) under optimum conditions. The reagent is free of unconjugated FITC and adjusted for direct use. No reconstitution is necessary.
Buffer	PBS, 15 mM Sodium azide and 0.2% (w/v) high-grade protease free BSA
Preservative	15 mM Sodium azide
Stabilizer	0.2% (w/v) high-grade protease free BSA
Storage instruction	Aliquot and store in the dark at 2-8°C. Keep protected from prolonged exposure to light. Avoid repeated freeze/thaw cycles. Suggest spin the vial prior to opening. The antibody solution should be gently mixed before use.

Note	For laboratory research only, not for drug, diagnostic or other use.
<b>Bioinformation</b>	
Database links	<a href="#">GeneID: 3682 Human</a> <a href="#">Swiss-port # P38570 Human</a>
Gene Symbol	ITGAE
Gene Full Name	integrin, alpha E (antigen CD103, human mucosal lymphocyte antigen 1; alpha polypeptide)
Background	<p>CD103 / Integrin alphaE is an integrin subunit that is expressed on intraepithelial lymphocytes, epithelial dendritic cells, lamina propria-derived dendritic cells, a subpopulation of lamina propria T cells, a small subset of peripheral lymphocytes, namely T reg cells, and on activated and TGF-beta stimulated lymphocytes. CD103 is in mature form cleaved into two disulfide-linked chains (C-terminal 150 kDa chain and N-terminal 25 kDa chain). It heterodimerizes with integrin beta7 subunit to form alphaE/beta7 integrin (mucosal lymphocyte 1 antigen), which through binding E-cadherin mediates homing of lymphocytes to the intestinal epithelium, and, in addition to the role in adhesion, may serve as an accessory molecule for intraepithelial lymphocyte activation.</p>
Function	Integrin alpha-E/beta-7 is a receptor for E-cadherin. It mediates adhesion of intra-epithelial T-lymphocytes to epithelial cell monolayers. [UniProt]
Research Area	Developmental Biology antibody; Immune System antibody; Signaling Transduction antibody
Calculated Mw	130 kDa

Bioinformation



ARG65418 anti-CD103 / Integrin alpha E antibody [Ber-ACT8] (FITC)  
FACS image

Flow Cytometry: PHA-activated PBMC stained with ARG65418 anti-CD103 / Integrin alpha E antibody [Ber-ACT8] (FITC) and anti-CD3 antibody.