

ARG65529 anti-TCR alpha + TCR beta antibody [R73]

Package: 100 µg
Store at: -20°C

Summary

Product Description	Mouse Monoclonal antibody [R73] recognizes TCR alpha + TCR beta
Tested Reactivity	Rat, NHuPrm
Tested Application	FACS, FuncSt, ICC/IF, IHC-Fr, IHC-P, IP, WB
Specificity	The clone R73 recognizes TCR alpha/beta, the dominant subtype of T cell receptor expressed in peripheral blood.
Host	Mouse
Clonality	Monoclonal
Clone	R73
Isotype	IgG1
Target Name	TCR alpha + TCR beta
Immunogen	Rat T blasts and erythrocytes
Conjugation	Un-conjugated

Application Instructions

Application table	Application	Dilution
	FACS	1 - 5 µg/ml
	FuncSt	Assay-dependent
	ICC/IF	Assay-dependent
	IHC-Fr	Assay-dependent
	IHC-P	Assay-dependent
	IP	Assay-dependent
	WB	Assay-dependent
	Application Note	
		Functional studies: In vitro activation and in vivo depletion of TCR alpha/beta T cells. * The dilutions indicate recommended starting dilutions and the optimal dilutions or concentrations should be determined by the scientist.

Properties

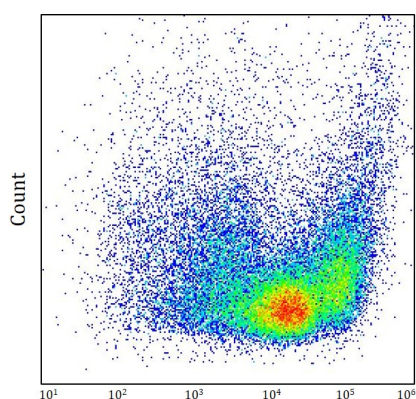
Form	Liquid
Purification	Purified from cell culture supernatant by protein-A affinity chromatography.
Purity	> 95% (by SDS-PAGE)
Buffer	PBS (pH 7.4) and 15 mM Sodium azide

Preservative	15 mM Sodium azide
Concentration	1 mg/ml
Storage instruction	For continuous use, store undiluted antibody at 2-8°C for up to a week. For long-term storage, aliquot and store at -20°C or below. Storage in frost free freezers is not recommended. Avoid repeated freeze/thaw cycles. Suggest spin the vial prior to opening. The antibody solution should be gently mixed before use.
Note	For laboratory research only, not for drug, diagnostic or other use.

Bioinformation

Database links	GeneID: 24820 Rat
Background	The antigen-specific T cell receptor (TCR) is composed of either alpha and beta subunit, or gamma and delta subunit. Majority of T cells present in the blood, lymph and secondary lymphoid organs express TCR alpha/beta heterodimers, whereas the T cells expressing TCR gamma/delta heterodimers are localized mainly in epithelial tissues and at the sites of infection. The subunits of TCR heterodimers are covalently bonded and in the endoplasmic reticulum they associate with CD3 subunits to form functional TCR-CD3 complex. Lack of expression of any of the chains is sufficient to stop cell surface expression._x000D_
Research Area	Developmental Biology antibody; Immune System antibody
Calculated Mw	TCR alpha: 30 kDa TCR beta: 35 kDa

Images



ARG65529 anti-TCR alpha + TCR beta antibody [R73] FACS image

Flow Cytometry: Rat thymocyte suspension stained with ARG65529 anti-TCR alpha + TCR beta antibody [R73] at 1.6 µg/ml dilution.