

ARG65531 anti-TCR alpha + TCR beta antibody [R73] (PE)

Package: 50 µg
Store at: 4°C

Summary

Product Description	PE-conjugated Mouse Monoclonal antibody [R73] recognizes TCR alpha + TCR beta
Tested Reactivity	Rat, NHuPrm
Tested Application	FACS
Specificity	The clone R73 recognizes TCR alpha/beta, the dominant subtype of T cell receptor expressed in peripheral blood.
Host	Mouse
Clonality	Monoclonal
Clone	R73
Isotype	IgG1
Target Name	TCR alpha + TCR beta
Immunogen	Rat T blasts and erythrocytes
Conjugation	PE

Application Instructions

Application table	Application	Dilution
	FACS	1 - 5 µg/ml
Application Note	* The dilutions indicate recommended starting dilutions and the optimal dilutions or concentrations should be determined by the scientist.	

Properties

Form	Liquid
Purification Note	The purified antibody is conjugated with R-Phycoerythrin (PE) under optimum conditions. The conjugate is purified by size-exclusion chromatography.
Buffer	PBS (pH 7.4) and 15 mM Sodium azide
Preservative	15 mM Sodium azide
Concentration	0.5 mg/ml
Storage instruction	Aliquot and store in the dark at 2-8°C. Keep protected from prolonged exposure to light. Avoid repeated freeze/thaw cycles. Suggest spin the vial prior to opening. The antibody solution should be gently mixed before use.
Note	For laboratory research only, not for drug, diagnostic or other use.

Bioinformation

Database links[GeneID: 24820 Rat](#)**Background**

The antigen-specific T cell receptor (TCR) is composed of either alpha and beta subunit, or gamma and delta subunit. Majority of T cells present in the blood, lymph and secondary lymphoid organs express TCR alpha/beta heterodimers, whereas the T cells expressing TCR gamma/delta heterodimers are localized mainly in epithelial tissues and at the sites of infection. The subunits of TCR heterodimers are covalently bonded and in the endoplasmic reticulum they associate with CD3 subunits to form functional TCR-CD3 complex. Lack of expression of any of the chains is sufficient to stop cell surface expression.

Research Area

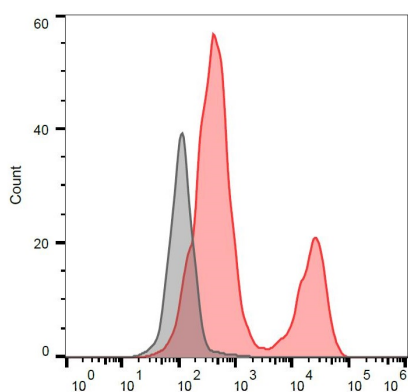
Developmental Biology antibody; Immune System antibody

Calculated Mw

TCR alpha: 30 kDa

TCR beta: 35 kDa

Images



ARG65531 anti-TCR alpha + TCR beta antibody [R73] (PE) FACS image

Flow Cytometry: Separation of unstained (black) and stained (red) Rat thymocytes. Cells were stained with ARG65531 anti-TCR alpha + TCR beta antibody [R73] (PE) at 0.11 µg/ml dilution.