

ARG65572 anti-NDUFAF4 antibody

Package: 100 µl
Store at: -20°C

Summary

Product Description	Rabbit Polyclonal antibody recognizes NDUFAF4
Tested Reactivity	Hu
Tested Application	IHC-P, WB
Host	Rabbit
Clonality	Polyclonal
Isotype	IgG
Target Name	NDUFAF4
Species	Human
Immunogen	Synthetic peptide of human NDUFAF4
Conjugation	Un-conjugated
Alternate Names	HSPC125; C6orf66; NADH dehydrogenase [ubiquinone] 1 alpha subcomplex assembly factor 4; Hormone-regulated proliferation-associated protein of 20 kDa; HRPAP20; bA22L21.1; My013

Application Instructions

Application table	Application	Dilution
	IHC-P	50-200
	WB	500-2000
Application Note	* The dilutions indicate recommended starting dilutions and the optimal dilutions or concentrations should be determined by the scientist.	
Positive Control	Raji cell	

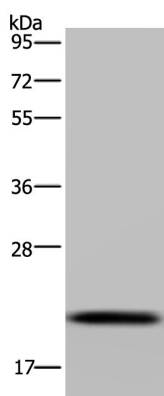
Properties

Form	Liquid
Purification	Purified by antigen-affinity chromatography.
Buffer	1XPBS (pH 7.4), 0.05% Sodium azide and 40% Glycerol
Preservative	0.05% Sodium azide
Stabilizer	40% Glycerol
Concentration	2.8 mg/ml
Storage instruction	For continuous use, store undiluted antibody at 2-8°C for up to a week. For long-term storage, aliquot and store at -20°C. Storage in frost free freezers is not recommended. Avoid repeated freeze/thaw cycles. Suggest spin the vial prior to opening. The antibody solution should be gently mixed before use.
Note	For laboratory research only, not for drug, diagnostic or other use.

Bioinformation

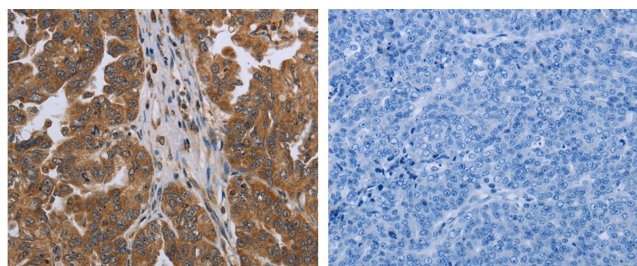
Database links	GeneID: 29078 Human Swiss-port # Q9P032 Human
Gene Symbol	NDUF4F
Gene Full Name	NADH dehydrogenase (ubiquinone) complex I, assembly factor 4
Background	NADH:ubiquinone oxidoreductase (complex I) catalyzes the transfer of electrons from NADH to ubiquinone (coenzyme Q) in the first step of the mitochondrial respiratory chain, resulting in the translocation of protons across the inner mitochondrial membrane. This gene encodes a complex I assembly factor. Mutations in this gene are a cause of mitochondrial complex I deficiency.
Function	Involved in the assembly of mitochondrial NADH:ubiquinone oxidoreductase complex (complex I). May be involved in cell proliferation and survival of hormone-dependent tumor cells. May be a regulator of breast tumor cell invasion. [UniProt]
Highlight	Related products: Anti-Rabbit IgG secondary antibodies: Related poster download: The Structure & Functions of Mitochondria.pdf
Research Area	Cancer antibody; Metabolism antibody; Signaling Transduction antibody
Calculated Mw	20 kDa
PTM	Phosphorylated on serine. Prolactin stimulate serine phosphorylation (By similarity).

Images



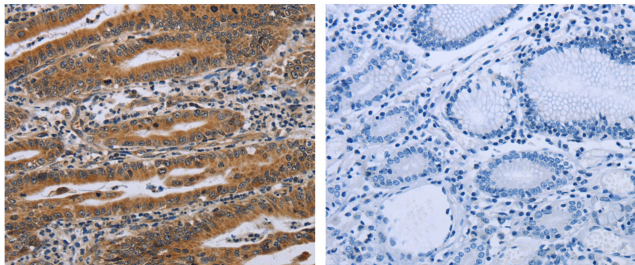
ARG65572 anti-NDUF4F antibody WB image

Western blot: 40 µg of Raji cell lysate stained with ARG65572 anti-NDUF4F antibody at 1:300 dilution. Exposure time: 5 seconds.



ARG65572 anti-NDUF4F antibody IHC-P image

Immunohistochemistry: Paraffin-embedded Human ovarian cancer tissue stained with ARG65572 anti-NDUF4F antibody (left) at 1:45 dilution, or the same antibody preincubated with synthetic peptide (right). (Original magnification: ×200).



ARG65572 anti-NDUFAF4 antibody IHC-P image

Immunohistochemistry: Paraffin-embedded Human ovarian cancer tissue stained with ARG65572 anti-NDUFAF4 antibody (left) at 1:45 dilution, or the same antibody preincubated with synthetic peptide (right). (Original magnification: $\times 200$).