

## ARG65581 anti-SLC25A4 antibody

Package: 100 µl  
Store at: -20°C

### Summary

Product Description	Rabbit Polyclonal antibody recognizes SLC25A4
Tested Reactivity	Hu, Ms
Tested Application	IHC-P, WB
Host	Rabbit
Clonality	Polyclonal
Isotype	IgG
Target Name	SLC25A4
Antigen Species	Human
Immunogen	Synthetic peptide of human SLC25A4
Conjugation	Un-conjugated
Alternate Names	ADP/ATP translocase 1; PEO2; PEO3; Solute carrier family 25 member 4; ADP,ATP carrier protein, heart/skeletal muscle isoform T1; ANT1; T1; ANT; AAC1; MTDP512; ADP,ATP carrier protein 1; Adenine nucleotide translocator 1; ANT 1

### Application Instructions

Application table	Application	Dilution
	IHC-P	50-200
	WB	500-2000
Application Note	* The dilutions indicate recommended starting dilutions and the optimal dilutions or concentrations should be determined by the scientist.	
Positive Control	Mouse heart and muscle tissue	
Calculated Mw	33 kDa	

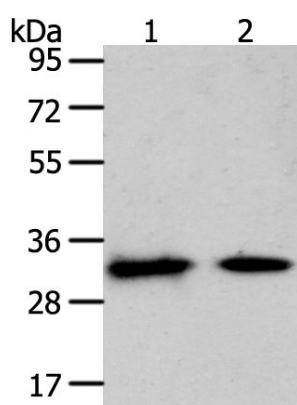
### Properties

Form	Liquid
Purification	Purified by antigen-affinity chromatography.
Buffer	1XPBS (pH 7.4), 0.05% Sodium azide and 40% Glycerol
Preservative	0.05% Sodium azide
Stabilizer	40% Glycerol
Concentration	1.6 mg/ml
Storage instruction	For continuous use, store undiluted antibody at 2-8°C for up to a week. For long-term storage, aliquot and store at -20°C. Storage in frost free freezers is not recommended. Avoid repeated freeze/thaw cycles. Suggest spin the vial prior to opening. The antibody solution should be gently mixed before use.

## Bioinformation

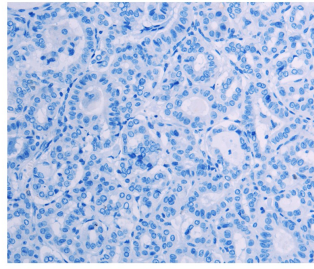
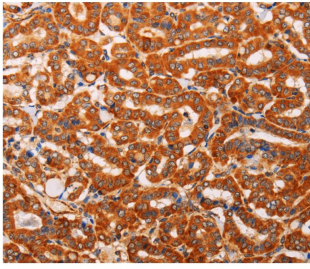
Database links	<a href="#">GeneID: 11739 Mouse</a> <a href="#">GeneID: 291 Human</a> <a href="#">Swiss-port # P12235 Human</a> <a href="#">Swiss-port # P48962 Mouse</a>
Gene Symbol	SLC25A4
Gene Full Name	solute carrier family 25 (mitochondrial carrier; adenine nucleotide translocator), member 4
Background	This gene is a member of the mitochondrial carrier subfamily of solute carrier protein genes. The product of this gene functions as a gated pore that translocates ADP from the mitochondrial matrix into the cytoplasm. The protein forms a homodimer embedded in the inner mitochondria membrane. Mutations in this gene have been shown to result in autosomal dominant progressive external ophthalmoplegia and familial hypertrophic cardiomyopathy.
Function	Catalyzes the exchange of cytoplasmic ADP with mitochondrial ATP across the mitochondrial inner membrane. [UniProt]
Highlight	Related products: <a href="#">SLC25A4 antibodies; Anti-Rabbit IgG secondary antibodies;</a> Related poster download: <a href="#">The Structure &amp; Functions of Mitochondria.pdf</a>
Research Area	Cell Biology and Cellular Response antibody; Cell Death antibody; Controls and Markers antibody; Metabolism antibody; Signaling Transduction antibody

## Images



ARG65581 anti-SLC25A4 antibody WB image

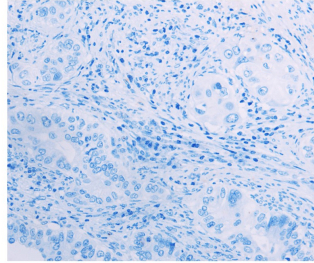
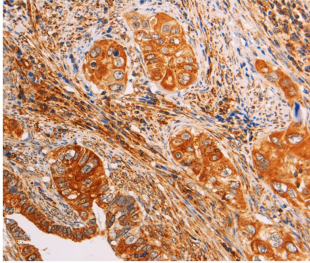
Western blot: ARG65581 anti-SLC25A4 antibody at 1/400 dilution with 40 µg of lysates.  
(1) Mouse heart tissue  
(2) Mouse muscle tissue  
Exposure time: 1 minute.



ARG65581 anti-SLC25A4 antibody IHC-P image

Immunohistochemistry: Paraffin-embedded Human thyroid cancer tissue stained with ARG65581 anti-SLC25A4 antibody (left) at 1/40 dilution, or the same antibody preincubated with synthetic peptide (right). (Original magnification:  $\times 200$ ).

---



ARG65581 anti-SLC25A4 antibody IHC-P image

Immunohistochemistry: Paraffin-embedded Human thyroid cancer tissue stained with ARG65581 anti-SLC25A4 antibody (left) at 1/40 dilution, or the same antibody preincubated with synthetic peptide (right). (Original magnification:  $\times 200$ ).

---