

ARG65616 anti-Cyclin G1 antibody

Package: 100 µl
Store at: -20°C

Summary

| | |
|---------------------|---|
| Product Description | Rabbit Polyclonal antibody recognizes Cyclin G1 |
| Tested Reactivity | Hu, Ms, Rat |
| Tested Application | IHC-P, WB |
| Host | Rabbit |
| Clonality | Polyclonal |
| Isotype | IgG |
| Target Name | Cyclin G1 |
| Species | Human |
| Immunogen | Recombinant protein of Human CCNG1 (NP_004051.1). |
| Conjugation | Un-conjugated |
| Alternate Names | Cyclin-G; CCNG; Cyclin-G1 |

Application Instructions

| | | |
|-------------------|--|-----------------|
| Application table | Application | Dilution |
| | IHC-P | Assay-dependent |
| | WB | 1:500 - 1:2000 |
| Application Note | * The dilutions indicate recommended starting dilutions and the optimal dilutions or concentrations should be determined by the scientist. | |

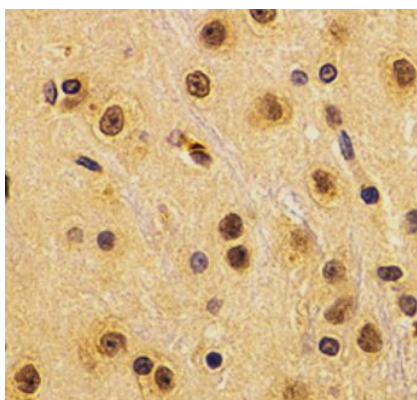
Properties

| | |
|---------------------|---|
| Form | Liquid |
| Purification | Affinity purification with immunogen. |
| Buffer | PBS (pH 7.3), 0.02% Sodium azide and 50% Glycerol |
| Preservative | 0.02% Sodium azide |
| Stabilizer | 50% Glycerol |
| Storage instruction | For continuous use, store undiluted antibody at 2-8°C for up to a week. For long-term storage, aliquot and store at -20°C. Storage in frost free freezers is not recommended. Avoid repeated freeze/thaw cycles. Suggest spin the vial prior to opening. The antibody solution should be gently mixed before use. |
| Note | For laboratory research only, not for drug, diagnostic or other use. |

Bioinformation

| | |
|----------------|--|
| Gene Symbol | CCNG1 |
| Gene Full Name | cyclin G1 |
| Background | The eukaryotic cell cycle is governed by cyclin-dependent protein kinases (CDKs) whose activities are regulated by cyclins and CDK inhibitors. The protein encoded by this gene is a member of the cyclin family and contains the cyclin box. The encoded protein lacks the protein destabilizing (PEST) sequence that is present in other family members. Transcriptional activation of this gene can be induced by tumor protein p53. Two transcript variants encoding the same protein have been identified for this gene. [provided by RefSeq, Jul 2008] |
| Function | May play a role in growth regulation. Is associated with G2/M phase arrest in response to DNA damage. May be an intermediate by which p53 mediates its role as an inhibitor of cellular proliferation (By similarity). [UniProt] |
| Research Area | Cell Biology and Cellular Response antibody; Gene Regulation antibody |
| Calculated Mw | 34 kDa |

Images



ARG65616 anti-Cyclin G1 antibody IHC-P image

Immunohistochemistry: Paraffin-embedded Rat brain stained with ARG65616 anti-Cyclin G1 antibody at 1:200 dilution.
