

## ARG65637 anti-CD28 antibody

Package: 100 µg  
Store at: -20°C

### Summary

Product Description	Goat Polyclonal antibody recognizes CD28
Tested Reactivity	Ms
Tested Application	WB
Host	Goat
Clonality	Polyclonal
Target Name	CD28
Species	Mouse
Immunogen	Synthetic peptide around the center region of Mouse CD28 (KEKHLCHTQSSPK)
Conjugation	Un-conjugated
Alternate Names	Tp44; TP44; T-cell-specific surface glycoprotein CD28; CD antigen CD28

### Application Instructions

Application table	Application	Dilution
	WB	0.3 - 1 µg/ml
Application Note	WB: Recommend incubate at RT for 1h. * The dilutions indicate recommended starting dilutions and the optimal dilutions or concentrations should be determined by the scientist.	

### Properties

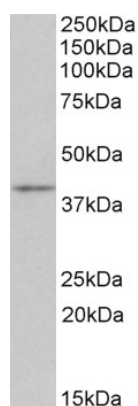
Form	Liquid
Purification	Affinity purified
Buffer	Tris saline (pH 7.3), 0.02% Sodium azide and 0.5% BSA.
Preservative	0.02% Sodium azide
Stabilizer	0.5% BSA
Concentration	0.5 mg/ml
Storage instruction	For continuous use, store undiluted antibody at 2-8°C for up to a week. For long-term storage, aliquot and store at -20°C or below. Storage in frost free freezers is not recommended. Avoid repeated freeze/thaw cycles. Suggest spin the vial prior to opening. The antibody solution should be gently mixed before use.
Note	For laboratory research only, not for drug, diagnostic or other use.

### Bioinformation

Database links	<a href="#">GeneID: 12487 Mouse</a> <a href="#">Swiss-port # P31041 Mouse</a>
Gene Symbol	Cd28
Gene Full Name	CD28 antigen
Background	The protein encoded by this gene is essential for T-cell proliferation and survival, cytokine production, and T-helper type-2 development. Several alternatively spliced transcript variants encoding different isoforms have been found for this gene.[provided by RefSeq, Jul 2011]
Function	Involved in T-cell activation, the induction of cell proliferation and cytokine production and promotion of T-cell survival.
Research Area	Developmental Biology antibody; Immune System antibody; Cytotoxic T Cell Surface Study antibody
Calculated Mw	25 kDa
PTM	CD40LG induces tyrosine phosphorylation of isoform 3.

## Images

---



ARG65637 anti-CD28 antibody WB image

Western blot: 35 µg of Mouse Thymus lysate stained with ARG65637 anti-CD28 antibody at 0.3 µg/ml dilution (1h incubation).