

ARG65649 anti-Caspase 6 antibody

Package: 100 µg
Store at: -20°C

Summary

Product Description	Goat Polyclonal antibody recognizes Caspase 6
Tested Reactivity	Hu
Tested Application	WB
Specificity	This antibody is expected to recognize both reported isoforms (NP_001217.2; NP_116787.1).
Host	Goat
Clonality	Polyclonal
Target Name	Caspase 6
Species	Human
Immunogen	Synthetic peptide around the internal region of Human Caspase-6 (C-QTEKLDTNITEVD)
Conjugation	Un-conjugated
Alternate Names	MCH2; EC 3.4.22.59; CASP-6; Caspase-6; Apoptotic protease Mch-2

Application Instructions

Application table	Application	Dilution
	WB	0.3 - 1 µg/ml
Application Note	WB: Recommend incubate at RT for 1h. * The dilutions indicate recommended starting dilutions and the optimal dilutions or concentrations should be determined by the scientist.	

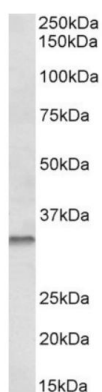
Properties

Form	Liquid
Purification	Affinity purified
Buffer	Tris saline (pH 7.3), 0.02% Sodium azide and 0.5% BSA.
Preservative	0.02% Sodium azide
Stabilizer	0.5% BSA
Concentration	0.5 mg/ml
Storage instruction	For continuous use, store undiluted antibody at 2-8°C for up to a week. For long-term storage, aliquot and store at -20°C or below. Storage in frost free freezers is not recommended. Avoid repeated freeze/thaw cycles. Suggest spin the vial prior to opening. The antibody solution should be gently mixed before use.
Note	For laboratory research only, not for drug, diagnostic or other use.

Bioinformation

Database links	GeneID: 839 Human Swiss-port # P55212 Human
Gene Symbol	CASP6
Gene Full Name	caspase 6, apoptosis-related cysteine peptidase
Background	This gene encodes a member of the cysteine-aspartic acid protease (caspase) family of enzymes. Sequential activation of caspases plays a central role in the execution-phase of cell apoptosis. Caspases exist as inactive proenzymes which undergo proteolytic processing at conserved aspartic acid residues to produce two subunits, large and small, that dimerize to form the active enzyme. This protein is processed by caspases 7, 8 and 10, and is thought to function as a downstream enzyme in the caspase activation cascade. Alternative splicing of this gene results in multiple transcript variants that encode different isoforms. [provided by RefSeq, Oct 2015]
Function	Involved in the activation cascade of caspases responsible for apoptosis execution. Cleaves poly(ADP-ribose) polymerase in vitro, as well as lamins. Overexpression promotes programmed cell death. [UniProt]
Research Area	Cancer antibody; Cell Biology and Cellular Response antibody; Cell Death antibody; Metabolism antibody; Neuroscience antibody
Calculated Mw	33.3 kDa (NP_001217.2)
PTM	Cleavages by caspase-3, caspase-8 or -10 generate the two active subunits.

Images



ARG65649 anti-Caspase 6 antibody WB image

Western blot: 35 µg of Human Colon lysate stained with ARG65649 anti-Caspase 6 antibody at 0.3 µg/ml dilution (1 hour incubation).