

## ARG65701 anti-NBR1 antibody

Package: 50 µl  
Store at: -20°C

### Summary

Product Description	Rabbit Polyclonal antibody recognizes NBR1
Tested Reactivity	Hu, Ms, Rat
Tested Application	ICC/IF, IHC-P, WB
Host	Rabbit
Clonality	Polyclonal
Isotype	IgG
Target Name	NBR1
Species	Human
Immunogen	Recombinant protein of Human NBR1.
Conjugation	Un-conjugated
Alternate Names	Protein 1A1-3B; Neighbor of BRCA1 gene 1 protein; Membrane component chromosome 17 surface marker 2; Cell migration-inducing gene 19 protein; M17S2; IAI3B; Next to BRCA1 gene 1 protein; MIG19; 1A1-3B

### Application Instructions

Predict Reactivity Note	Monkey, Rat								
Application table	<table> <tr> <th>Application</th><th>Dilution</th></tr> <tr> <td>ICC/IF</td><td>1:50 - 1:100</td></tr> <tr> <td>IHC-P</td><td>1:50 - 1:200</td></tr> <tr> <td>WB</td><td>1:500 - 1:2000</td></tr> </table>	Application	Dilution	ICC/IF	1:50 - 1:100	IHC-P	1:50 - 1:200	WB	1:500 - 1:2000
Application	Dilution								
ICC/IF	1:50 - 1:100								
IHC-P	1:50 - 1:200								
WB	1:500 - 1:2000								
Application Note	* The dilutions indicate recommended starting dilutions and the optimal dilutions or concentrations should be determined by the scientist.								
Positive Control	HeLa								

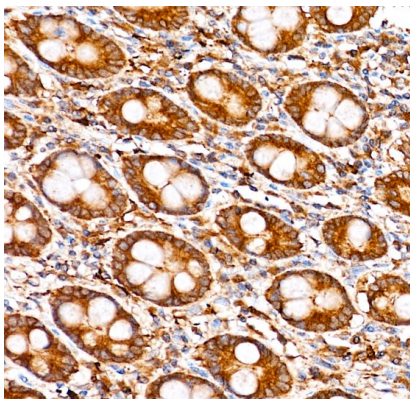
### Properties

Form	Liquid
Purification	Affinity purification with immunogen.
Buffer	PBS (pH 7.3), 0.02% Sodium azide and 50% Glycerol
Preservative	0.02% Sodium azide
Stabilizer	50% Glycerol
Storage instruction	For continuous use, store undiluted antibody at 2-8°C for up to a week. For long-term storage, aliquot and store at -20°C. Storage in frost free freezers is not recommended. Avoid repeated freeze/thaw cycles. Suggest spin the vial prior to opening. The antibody solution should be gently mixed before use.

## Bioinformation

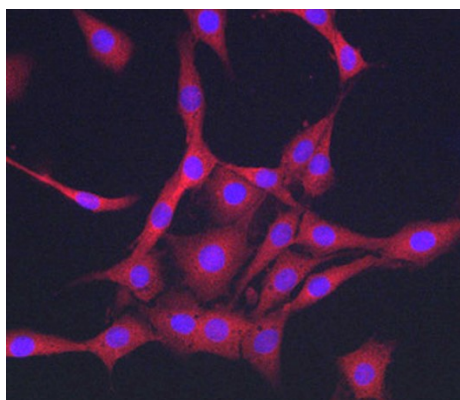
Gene Symbol	NBR1
Gene Full Name	neighbor of BRCA1 gene 1
Background	The protein encoded by this gene was originally identified as an ovarian tumor antigen monitored in ovarian cancer. The encoded protein contains a B-box/coiled-coil motif, which is present in many genes with transformation potential. It functions as a specific autophagy receptor for the selective autophagic degradation of peroxisomes by forming intracellular inclusions with ubiquitylated autophagic substrates. This gene is located on a region of chromosome 17q21.1 that is in close proximity to the BRCA1 tumor suppressor gene. Alternative splicing of this gene results in multiple transcript variants. [provided by RefSeq, Apr 2014]
Function	Acts probably as a receptor for selective autophagosomal degradation of ubiquitinated targets. [UniProt]
Research Area	Cell Biology and Cellular Response antibody
Calculated Mw	107 kDa

## Images



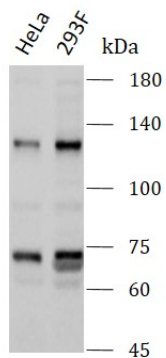
ARG65701 anti-NBR1 antibody IHC-P image

Immunohistochemistry: Human colon stained with ARG65701 anti-NBR1 antibody at 1:100 dilution.



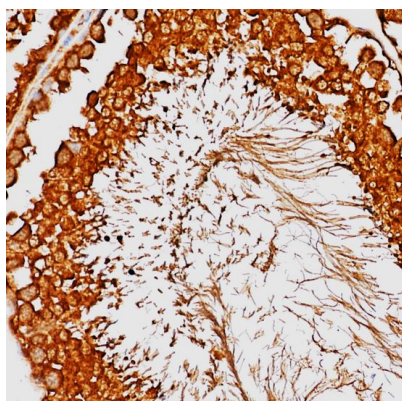
ARG65701 anti-NBR1 antibody ICC/IF image

Immunofluorescence: PC-12 stained with ARG65701 anti-NBR1 antibody at 1:50 dilution.



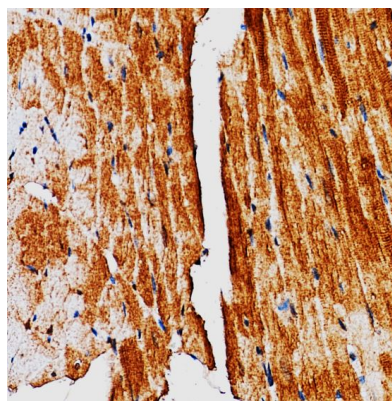
ARG65701 anti-NBR1 antibody WB image

Western blot: HeLa and 293F stained with ARG65701 anti-NBR1 antibody at 1:400 dilution.



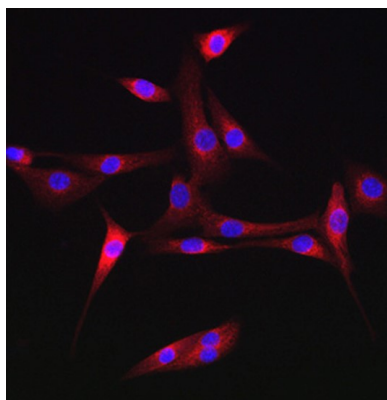
ARG65701 anti-NBR1 antibody IHC-P image

Immunohistochemistry: Rat testis stained with ARG65701 anti-NBR1 antibody at 1:100 dilution.



ARG65701 anti-NBR1 antibody IHC-P image

Immunohistochemistry: Mouse heart stained with ARG65701 anti-NBR1 antibody at 1:100 dilution.



ARG65701 anti-NBR1 antibody ICC/IF image

Immunofluorescence: NIH/3T3 stained with ARG65701 anti-NBR1 antibody at 1:50 dilution.