

## ARG65762 anti-CD54 / ICAM1 antibody

Package: 100 µl, 50 µl  
Store at: -20°C

### Summary

Product Description	Rabbit Polyclonal antibody recognizes CD54 / ICAM1
Tested Reactivity	Hu
Tested Application	FACS, ICC/IF, IHC-P, WB
Host	Rabbit
Clonality	Polyclonal
Isotype	IgG
Target Name	CD54 / ICAM1
Species	Human
Immunogen	Synthetic peptide derived from Human CD54 / ICAM1.
Conjugation	Un-conjugated
Alternate Names	CD54; CD antigen CD54; BB2; P3.58; Intercellular adhesion molecule 1; Major group rhinovirus receptor; ICAM-1

### Application Instructions

Application table	Application	Dilution
	FACS	1:50
	ICC/IF	1:50 - 1:200
	IHC-P	1:50 - 1:200
	WB	1:500 - 1:2000
Application Note	* The dilutions indicate recommended starting dilutions and the optimal dilutions or concentrations should be determined by the scientist.	
Positive Control	A549 and Raji	
Observed Size	90 ~ 95 kDa	

### Properties

Form	Liquid
Purification	Affinity purified.
Buffer	PBS (pH 7.4), 150 mM NaCl, 0.02% Sodium azide and 50% Glycerol.
Preservative	0.02% Sodium azide
Stabilizer	50% Glycerol
Storage instruction	For continuous use, store undiluted antibody at 2-8°C for up to a week. For long-term storage, aliquot and store at -20°C. Storage in frost free freezers is not recommended. Avoid repeated freeze/thaw

cycles. Suggest spin the vial prior to opening. The antibody solution should be gently mixed before use.

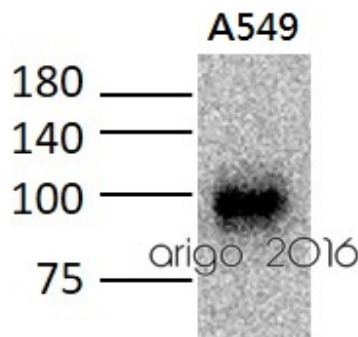
#### Note

For laboratory research only, not for drug, diagnostic or other use.

## Bioinformation

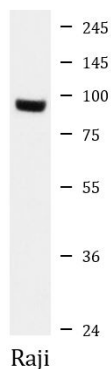
Database links	<a href="#">GeneID: 3383 Human</a> <a href="#">Swiss-port # P05362 Human</a>
Gene Symbol	ICAM1
Gene Full Name	intercellular adhesion molecule 1
Background	This gene encodes a cell surface glycoprotein which is typically expressed on endothelial cells and cells of the immune system. It binds to integrins of type CD11a / CD18, or CD11b / CD18 and is also exploited by Rhinovirus as a receptor. [provided by RefSeq, Jul 2008]
Function	ICAM proteins are ligands for the leukocyte adhesion protein LFA-1 (integrin alpha-L/beta-2). During leukocyte trans-endothelial migration, ICAM1 engagement promotes the assembly of endothelial apical cups through ARHGEF26/SGEF and RHOG activation (By similarity). [UniProt]
Research Area	Cell Biology and Cellular Response antibody; Developmental Biology antibody; Immune System antibody; Cytotoxic T Cell Surface Study antibody
Calculated Mw	58 kDa
PTM	Monoubiquitinated, which is promoted by MARCH9 and leads to endocytosis.

## Images



ARG65762 anti-CD54 / ICAM1 antibody WB image

Western blot: 30 µg of A549 cell lysate stained with ARG65762 anti-CD54 / ICAM1 antibody at 1:500 dilution.



ARG65762 anti-CD54 / ICAM1 antibody WB image

Western blot: Raji cell lysate stained with ARG65762 anti-CD54 / ICAM1 antibody.