

ARG65787 anti-CEP76 antibody

Package: 100 µl
Store at: -20°C

Summary

Product Description	Rabbit Polyclonal antibody recognizes CEP76
Tested Reactivity	Hu, Ms
Predict Reactivity	Mk, Rat, Zfsh
Tested Application	WB
Specificity	Recognizes endogenous levels of CEP76 protein.
Host	Rabbit
Clonality	Polyclonal
Isotype	IgG
Target Name	CEP76
Species	Human
Immunogen	KLH-conjugated synthetic peptide around the center region of Human CEP76.
Conjugation	Un-conjugated
Alternate Names	Centrosomal protein of 76 kDa; Cep76; HsT1705; C18orf9

Application Instructions

Application table	Application	Dilution
	WB	1:500 - 1:1000
Application Note	* The dilutions indicate recommended starting dilutions and the optimal dilutions or concentrations should be determined by the scientist.	

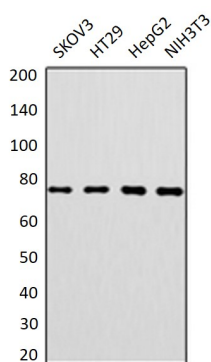
Properties

Form	Liquid
Purification	Affinity purification with immunogen.
Buffer	PBS (pH 7.3), 0.02% Sodium azide and 0.2% BSA.
Preservative	0.02% Sodium azide
Stabilizer	0.2% BSA
Storage instruction	For continuous use, store undiluted antibody at 2-8°C for up to a week. For long-term storage, aliquot and store at -20°C or below. Storage in frost free freezers is not recommended. Avoid repeated freeze/thaw cycles. Suggest spin the vial prior to opening. The antibody solution should be gently mixed before use.
Note	For laboratory research only, not for drug, diagnostic or other use.

Bioinformation

Database links	GeneID: 225659 Mouse
	GeneID: 79959 Human
	Swiss-port # Q0VEJ0 Mouse
	Swiss-port # Q8TAP6 Human
Gene Symbol	CEP76
Gene Full Name	centrosomal protein 76kDa
Background	This gene encodes a centrosomal protein which regulates centriole amplification by limiting centriole duplication to once per cell cycle. Alternative splicing results in multiple transcript variants. [provided by RefSeq, Dec 2012]
Function	Centrosomal protein involved in regulation of centriole duplication. Required to limit centriole duplication to once per cell cycle by preventing centriole reduplication. [UniProt]
Calculated Mw	74 kDa

Images



ARG65787 anti-CEP76 antibody WB image

Western blot: SKOV3, HT29, HepG2 and NIH3T3 whole cell lysates stained with ARG65787 anti-CEP76 antibody.