

## ARG65989 anti-Resistin antibody [1.2\_3D7-1D11]

Package: 100 µg  
Store at: -20°C

### Summary

Product Description	Mouse Monoclonal antibody [1.2_3D7-1D11] recognizes Resistin
Tested Reactivity	Hu
Tested Application	ELISA, IHC-P, WB
Host	Mouse
Clonality	Monoclonal
Clone	1.2_3D7-1D11
Isotype	IgG2b, kappa
Target Name	Resistin
Species	Human
Immunogen	E. coli derived recombinant Human Resistin. (SSKTLCSMEE AINERIQEVA GSLIFRAISS IGLEQSVTS RGDLATCPRG FAVTGCTCGS ACGSWDVRAE TTCHCQCAGM DWTGARCCRV QP)
Conjugation	Un-conjugated
Alternate Names	C/EBP-epsilon-regulated myeloid-specific secreted cysteine-rich protein; Cysteine-rich secreted protein A12-alpha-like 2; XCP1; Resistin; Adipose tissue-specific secretory factor; FIZZ3; RETN1; ADSF; Cysteine-rich secreted protein FIZZ3; RSTN

### Application Instructions

Application table	Application	Dilution
	ELISA	Sandwich: 4.0 - 8.0 µg/ml with ARG66074 as a detection antibody
	IHC-P	1 µg/ml
	WB	0.20 - 0.40 µg/ml
Application Note	IHC-P: Antigen Retrieval: Boil tissue section in Sodium Citrate buffer (pH 6.0) followed by cooling at RT for 20 min. * The dilutions indicate recommended starting dilutions and the optimal dilutions or concentrations should be determined by the scientist.	

### Properties

Form	Liquid
Purification	Purification with Protein A.
Buffer	PBS (pH 7.2)
Concentration	1 mg/ml
Storage instruction	For continuous use, store undiluted antibody at 2-8°C for up to a week. For long-term storage, aliquot and store at -20°C or below. Storage in frost free freezers is not recommended. Avoid repeated

freeze/thaw cycles. Suggest spin the vial prior to opening. The antibody solution should be gently mixed before use.

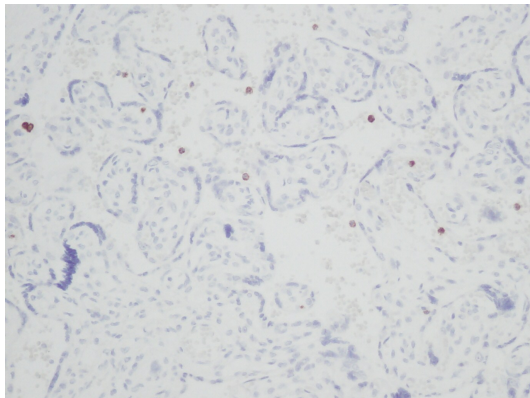
#### Note

For laboratory research only, not for drug, diagnostic or other use.

## Bioinformation

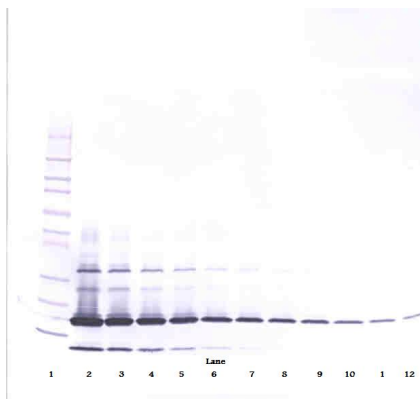
Database links	<a href="#">GeneID: 56729 Human</a> <a href="#">Swiss-port # Q9HD89 Human</a>
Gene Symbol	RETN
Gene Full Name	resistin
Background	This gene belongs to the family defined by the mouse resistin-like genes. The characteristic feature of this family is the C-terminal stretch of 10 cys residues with identical spacing. The mouse homolog of this protein is secreted by adipocytes, and may be the hormone potentially linking obesity to type II diabetes. Alternatively spliced transcript variants encoding the same protein have been found for this gene. [provided by RefSeq, Jul 2010]
Function	Hormone that seems to suppress insulin ability to stimulate glucose uptake into adipose cells. Potentially links obesity to diabetes. [UniProt]
Highlight	Related products: <a href="#">Resistin antibodies</a> ; <a href="#">Resistin ELISA Kits</a> ; <a href="#">Anti-Mouse IgG secondary antibodies</a> ;
Calculated Mw	11 kDa

## Images



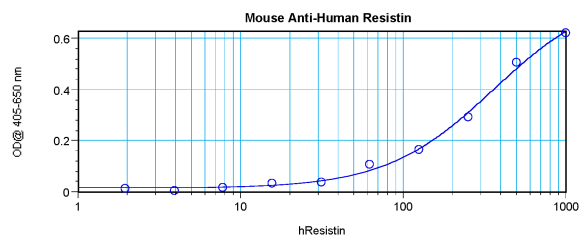
ARG65989 anti-Resistin antibody [1.2\_3D7-1D11] IHC-P image

Immunohistochemistry: Formalin-fixed and paraffin-embedded sections of Human normal placenta. The recommended ARG65989 anti-Resistin antibody [1.2\_3D7-1D11] concentration is 1.0 µg/ml with a two hour incubation at RT. An HRP-labeled polymer detection system was used with a DAB chromogen. Antigen Retrieval: Boil tissue section in Sodium Citrate buffer (pH 6.0) followed by cooling at RT for 20 min.



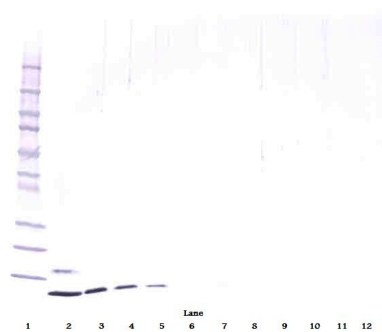
ARG65989 anti-Resistin antibody [1.2\_3D7-1D11] WB image

Western blot: 250 - 0.24 ng (left to right) of Human Resistin stained with ARG65989 anti-Resistin antibody [1.2\_3D7-1D11], under non-reducing conditions.



ARG65989 anti-Resistin antibody [1.2\_3D7-1D11] standard curve image

Sandwich ELISA: ARG65989 anti-Resistin antibody [1.2\_3D7-1D11] as a capture antibody at 4.0 - 8.0  $\mu\text{g/ml}$  combined with ARG66074 anti-Resistin antibody (Biotin) as a detection antibody at 0.5 - 1.0  $\mu\text{g/ml}$ . Results of a typical standard run with optical density reading at 405 - 650 nm.



ARG65989 anti-Resistin antibody [1.2\_3D7-1D11] WB image

Western blot: 250 - 0.24 ng (left to right) of Human Resistin stained with ARG65989 anti-Resistin antibody [1.2\_3D7-1D11], under reducing conditions.