

ARG66006 anti-Lymphotactin antibody

Package: 50 µg
Store at: -20°C

Summary

Product Description	Rabbit Polyclonal antibody recognizes Lymphotactin
Tested Reactivity	Hu
Tested Application	ELISA, IHC-P, Neut, WB
Host	Rabbit
Clonality	Polyclonal
Isotype	IgG
Target Name	Lymphotactin
Species	Human
Immunogen	E. coli derived recombinant Human Lymphotactin. (GSEVSDKRTC VSLTTQRLPV SRIKTYTITE GSLRAVIFIT KRGLKVCADP QATWVRDVVR SMDRKSNTRN NMIQTKPTGT QQSTNTAVTL TG)
Conjugation	Un-conjugated
Alternate Names	Lymphotaxin; C motif chemokine 1; SCYC1; Cytokine SCM-1; Lymphotactin; Small-inducible cytokine C1; ATAC; SCM1A; SCM-1a; LPTN; XC chemokine ligand 1; SCM-1; SCM-1-alpha; SCM1; LTN

Application Instructions

Application table	Application	Dilution
	ELISA	Sandwich: 0.5 - 2.0 µg/ml with ARG66007 as a detection antibody
	IHC-P	0.5 µg/ml
	Neut	1.7 - 3.0 µg/ml (To yield [ND50] of the biological activity of hLymphotactin (60 ng/ml))
	WB	0.1 - 0.2 µg/ml
Application Note	IHC-P: Antigen Retrieval: Boil tissue section in Sodium Citrate buffer (pH 6.0) followed by cooling at RT for 20 min. * The dilutions indicate recommended starting dilutions and the optimal dilutions or concentrations should be determined by the scientist.	

Properties

Form	Liquid
Purification	Affinity purification with immunogen.
Buffer	PBS (pH 7.2)
Concentration	1 mg/ml
Storage instruction	For continuous use, store undiluted antibody at 2-8°C for up to a week. For long-term storage, aliquot and store at -20°C or below. Storage in frost free freezers is not recommended. Avoid repeated

freeze/thaw cycles. Suggest spin the vial prior to opening. The antibody solution should be gently mixed before use.

Note

For laboratory research only, not for drug, diagnostic or other use.

Bioinformation

Database links

[GeneID: 6375 Human](#)

[Swiss-port # P47992 Human](#)

Gene Symbol

XCL1

Gene Full Name

chemokine (C motif) ligand 1

Background

This antimicrobial gene encodes a member of the chemokine superfamily. Chemokines function in inflammatory and immunological responses, inducing leukocyte migration and activation. The encoded protein is a member of the C-chemokine subfamily, retaining only two of four cysteines conserved in other chemokines, and is thought to be specifically chemotactic for T cells. This gene and a closely related family member are located on the long arm of chromosome 1. [provided by RefSeq, Sep 2014]

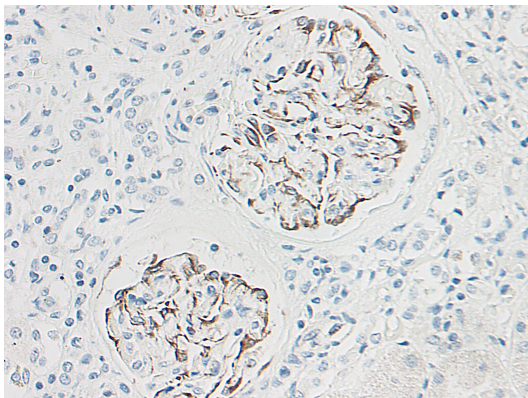
Function

Chemotactic activity for lymphocytes but not for monocytes or neutrophils. [UniProt]

Calculated Mw

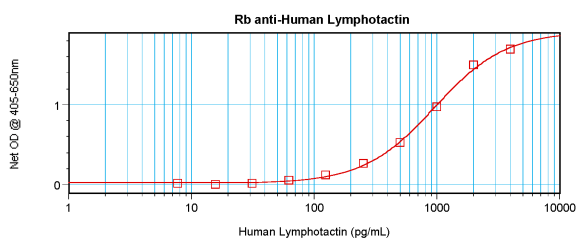
13 kDa

Images



ARG66006 anti-Lymphotactin antibody IHC-P image

Immunohistochemistry: Formalin-fixed and paraffin-embedded sections of Human normal kidney. The recommended ARG66006 anti-Lymphotactin antibody concentration is 0.5 µg/ml with an overnight incubation at 4°C. An HRP-labeled polymer detection system was used with a DAB chromogen. Antigen Retrieval: Boil tissue section in Sodium Citrate buffer (pH 6.0) followed by cooling at RT for 20 min.



ARG66006 anti-Lymphotactin antibody standard curve image

Sandwich ELISA: ARG66006 anti-Lymphotactin antibody as a capture antibody at 0.5 - 2.0 µg/ml combined with ARG66007 anti-Lymphotactin antibody (Biotin) as a detection antibody. Results of a typical standard run with optical density reading at 405 - 650 nm.