

ARG66008 anti-M-CSF antibody

Package: 50 µg
Store at: -20°C

Summary

Product Description	Rabbit Polyclonal antibody recognizes M-CSF
Tested Reactivity	Hu
Tested Application	ELISA, IHC-P, Neut, WB
Host	Rabbit
Clonality	Polyclonal
Isotype	IgG
Target Name	M-CSF
Species	Human
Immunogen	E. coli derived recombinant Human M-CSF. (MEEVSEYCSH MIGSGHLQSL QRLIDSQMET SCQITFEFVD QEQLKDPVCY LKKAFLLVQD IMEDTMRFRD NTPNAIAIVQ LQELSLRLKS CFTKDYEEHD KACVRTFYET PLQLLEKVKV VFNETHKLLD KDOWNIFSKNC NNSFAECSSQ GHERQSEGS)
Conjugation	Un-conjugated
Alternate Names	Macrophage colony-stimulating factor 1; CSF-1; Lanimostim; M-CSF; MCSF

Application Instructions

Application table	Application	Dilution
	ELISA	Sandwich: 0.5 - 2.0 µg/ml with ARG66009 as a detection antibody
	IHC-P	0.5 µg/ml
	Neut	0.02 - 0.03 µg/ml (To yield [ND50] of the biological activity of hM-CSF (7.0 ng/ml))
	WB	0.1 - 0.2 µg/ml
Application Note	IHC-P: Antigen Retrieval: Boil tissue section in Sodium Citrate buffer (pH 6.0) followed by cooling at RT for 20 min. * The dilutions indicate recommended starting dilutions and the optimal dilutions or concentrations should be determined by the scientist.	

Properties

Form	Liquid
Purification	Affinity purification with immunogen.
Buffer	PBS (pH 7.2)
Concentration	1 mg/ml
Storage instruction	For continuous use, store undiluted antibody at 2-8°C for up to a week. For long-term storage, aliquot and store at -20°C or below. Storage in frost free freezers is not recommended. Avoid repeated

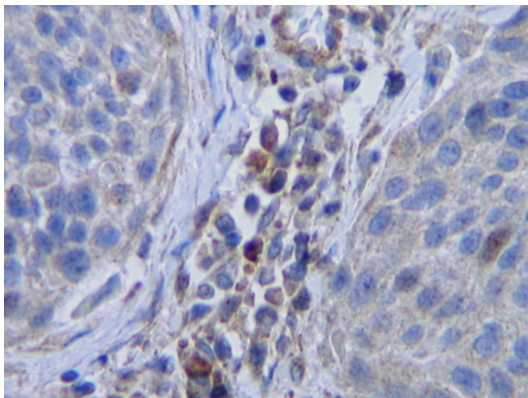
freeze/thaw cycles. Suggest spin the vial prior to opening. The antibody solution should be gently mixed before use.

Note For laboratory research only, not for drug, diagnostic or other use.

Bioinformation

Database links	GeneID: 1435 Human Swiss-port # P09603 Human
Gene Symbol	CSF1
Gene Full Name	colony stimulating factor 1 (macrophage)
Background	The protein encoded by this gene is a cytokine that controls the production, differentiation, and function of macrophages. The active form of the protein is found extracellularly as a disulfide-linked homodimer, and is thought to be produced by proteolytic cleavage of membrane-bound precursors. The encoded protein may be involved in development of the placenta. Alternate splicing results in multiple transcript variants. [provided by RefSeq, Sep 2011]
Function	Cytokine that plays an essential role in the regulation of survival, proliferation and differentiation of hematopoietic precursor cells, especially mononuclear phagocytes, such as macrophages and monocytes. Promotes the release of proinflammatory chemokines, and thereby plays an important role in innate immunity and in inflammatory processes. Plays an important role in the regulation of osteoclast proliferation and differentiation, the regulation of bone resorption, and is required for normal bone development. Required for normal male and female fertility. Promotes reorganization of the actin cytoskeleton, regulates formation of membrane ruffles, cell adhesion and cell migration. Plays a role in lipoprotein clearance. [UniProt]
Calculated Mw	60 kDa
PTM	N- and O-glycosylated. Glycosylation and proteolytic cleavage yield different soluble forms. One high molecular weight soluble form is a proteoglycan containing chondroitin sulfate. O-glycosylated with core 1 or possibly core 8 glycans. Isoform 1 is N- and O-glycosylated. Isoform 3 is only N-glycosylated.

Images



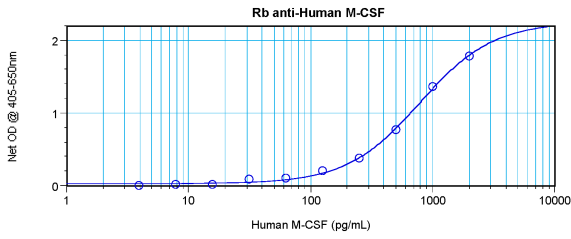
ARG66008 anti-M-CSF antibody IHC-P image

Immunohistochemistry: Formalin-fixed and paraffin-embedded sections of Human cervical squamous cell carcinoma. The recommended ARG66008 anti-M-CSF antibody concentration is 0.5 µg/ml with an overnight incubation at 4°C. An HRP-labeled polymer detection system was used with a DAB chromogen. Antigen Retrieval: Boil tissue section in Sodium Citrate buffer (pH 6.0) followed by cooling at RT for 20 min.



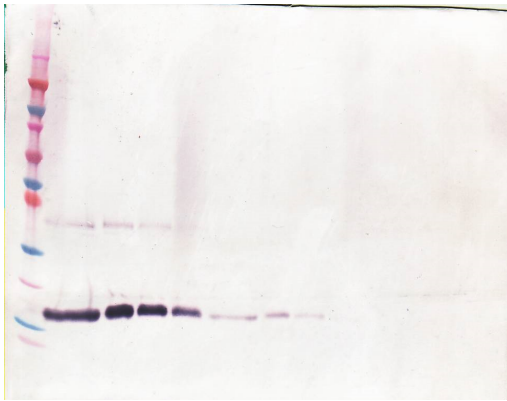
ARG66008 anti-M-CSF antibody WB image

Western blot: 250 - 0.24 ng of Human M-CSF stained with ARG66008 anti-M-CSF antibody, under non-reducing conditions.



ARG66008 anti-M-CSF antibody standard curve image

Sandwich ELISA: ARG66008 anti-M-CSF antibody as a capture antibody at 0.5 - 2.0 µg/ml combined with ARG66009 anti-M-CSF antibody (Biotin) as a detection antibody. Results of a typical standard run with optical density reading at 405 - 650 nm.



ARG66008 anti-M-CSF antibody WB image

Western blot: 250 - 0.24 ng of Human M-CSF stained with ARG66008 anti-M-CSF antibody, under reducing conditions.