

ARG66011 anti-PDGF AA antibody

Package: 50 µg
Store at: -20°C

Summary

| | |
|---------------------|---|
| Product Description | Rabbit Polyclonal antibody recognizes PDGF AA |
| Tested Reactivity | Hu |
| Tested Application | ELISA, IHC-P, Neut |
| Host | Rabbit |
| Clonality | Polyclonal |
| Isotype | IgG |
| Target Name | PDGF AA |
| Species | Human |
| Immunogen | E. coli derived recombinant Human PDGF AA. (SIEEAVPAVC KTRTVIYEIP RSQVDPTSAN FLIWPPCDEV KRCTGCCNTS SVKCQPSRVH HRSVKVAKVE YVRKKPKLKE VQVRLEEHLE CACATTSLNP DYREEDTGRP RESGKKRKRK RLKPT) |
| Conjugation | Un-conjugated |
| Alternate Names | Platelet-derived growth factor subunit A; PDGF subunit A; Platelet-derived growth factor alpha polypeptide; Platelet-derived growth factor A chain; PDGF-1; PDGF1; PDGF-A |

Application Instructions

| Application table | Application | Dilution |
|-------------------|--|---|
| | ELISA | Sandwich: 0.5 - 2.0 µg/ml with ARG66012 as a detection antibody |
| | IHC-P | 1 µg/ml |
| | Neut | 0.13 - 0.20 µg/ml (To yield [ND50] of the biological activity of hPDGF-AA (5.0 ng/ml)) |
| Application Note | IHC-P: Antigen Retrieval: Incubate tissue section in a buffer (proteinase K) at RT for 10 min. * The dilutions indicate recommended starting dilutions and the optimal dilutions or concentrations should be determined by the scientist. | |

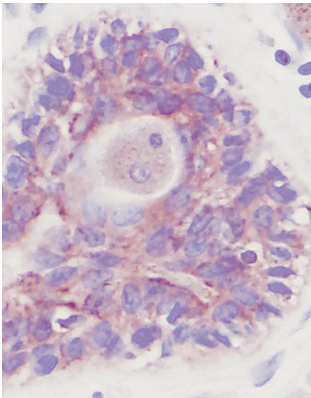
Properties

| | |
|---------------------|--|
| Form | Liquid |
| Purification | Affinity purification with immunogen. |
| Buffer | PBS (pH 7.2) |
| Concentration | 1 mg/ml |
| Storage instruction | For continuous use, store undiluted antibody at 2-8°C for up to a week. For long-term storage, aliquot and store at -20°C or below. Storage in frost free freezers is not recommended. Avoid repeated freeze/thaw cycles. Suggest spin the vial prior to opening. The antibody solution should be gently mixed before use. |

Bioinformation

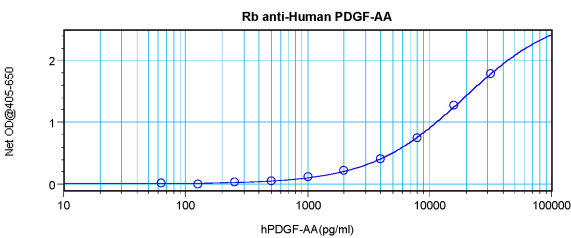
| | |
|----------------|--|
| Database links | GeneID: 5154 Human Swiss-port # P04085 Human |
| Gene Symbol | PDGFA |
| Gene Full Name | platelet-derived growth factor alpha polypeptide |
| Background | The protein encoded by this gene is a member of the platelet-derived growth factor family. The four members of this family are mitogenic factors for cells of mesenchymal origin and are characterized by a motif of eight cysteines. This gene product can exist either as a homodimer or as a heterodimer with the platelet-derived growth factor beta polypeptide, where the dimers are connected by disulfide bonds. Studies using knockout mice have shown cellular defects in oligodendrocytes, alveolar smooth muscle cells, and Leydig cells in the testis; knockout mice die either as embryos or shortly after birth. Two splice variants have been identified for this gene. [provided by RefSeq, Jul 2008] |
| Function | Growth factor that plays an essential role in the regulation of embryonic development, cell proliferation, cell migration, survival and chemotaxis. Potent mitogen for cells of mesenchymal origin. Required for normal lung alveolar septum formation during embryogenesis, normal development of the gastrointestinal tract, normal development of Leydig cells and spermatogenesis. Required for normal oligodendrocyte development and normal myelination in the spinal cord and cerebellum. Plays an important role in wound healing. Signaling is modulated by the formation of heterodimers with PDGFB (By similarity). [UniProt] |
| Calculated Mw | 24 kDa |

Images



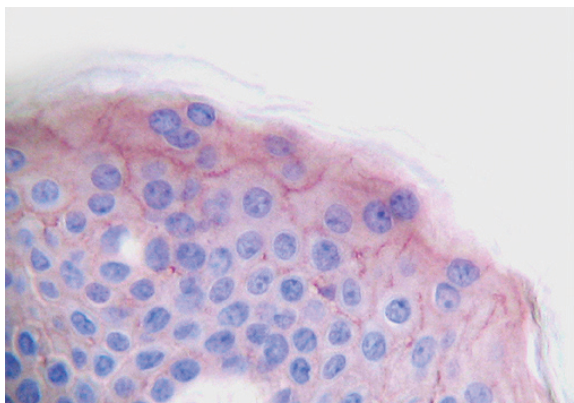
ARG66011 anti-PDGF AA antibody IHC-P image

Immunohistochemistry: Formalin-fixed and paraffin-embedded sections of normal Human skin. The recommended ARG66011 anti-PDGF AA antibody concentration is 1.0 µg/ml overnight at 4°C. An HRP-labeled polymer detection system was used with a non-alcohol soluble AEC chromogen. Antigen Retrieval: Incubate tissue section in a buffer (proteinase K) at RT for 10 min.



ARG66011 anti-PDGF AA antibody standard curve image

Sandwich ELISA: ARG66011 anti-PDGF AA antibody as a capture antibody at 0.5 - 2.0 µg/ml combined with ARG66012 anti-PDGF AA antibody (Biotin) as a detection antibody. Results of a typical standard run with optical density reading at 405 - 650 nm.



ARG66011 anti-PDGF AA antibody IHC-P image

Immunohistochemistry: Formalin-fixed and paraffin-embedded sections of normal Human skin. The recommended ARG66011 anti-PDGF AA antibody concentration is 1.0 µg/ml overnight at 4°C. An HRP-labeled polymer detection system was used with a non-alcohol soluble AEC chromogen. Antigen Retrieval: Incubate tissue section in a buffer (proteinase K) at RT for 10 min.