

## ARG66020 anti-MCP5 / Mast cell chymase antibody (Biotin)

Package: 50 µg  
Store at: 4°C

### Summary

Product Description	Biotin-conjugated Rabbit Polyclonal antibody recognizes MCP5 / Mast cell chymase
Tested Reactivity	Ms
Tested Application	ELISA, WB
Host	Rabbit
Clonality	Polyclonal
Isotype	IgG
Target Name	MCP5 / Mast cell chymase
Species	Mouse
Immunogen	E. coli derived recombinant Mouse MCP5. (GPDVAVSTPVT CCYNVVKQKI HVRKLKSYRR ITSSQCPREA VIFRTILDKE ICADPKEKWV KNSINHLDKT SQTFILEPSC LG)
Conjugation	Biotin
Alternate Names	Chymase; Alpha-chymase; Mast cell protease I; chymase; CYH; EC 3.4.21.39; MCT1

### Application Instructions

Application table	Application	Dilution
	ELISA	Direct: 0.25 - 1.0 µg/ml Sandwich: 0.25 - 1.0 µg/ml with ARG66019 as a capture antibody
	WB	0.1 - 0.2 µg/ml
Application Note	* The dilutions indicate recommended starting dilutions and the optimal dilutions or concentrations should be determined by the scientist.	

### Properties

Form	Liquid
Purification	Purified by affinity chromatography.
Buffer	PBS (pH 7.2)
Concentration	1 mg/ml
Storage instruction	Aliquot and store in the dark at 2-8°C. Keep protected from prolonged exposure to light. Avoid repeated freeze/thaw cycles. Suggest spin the vial prior to opening. The antibody solution should be gently mixed before use.
Note	For laboratory research only, not for drug, diagnostic or other use.

### Bioinformation

Database links [GeneID: 17228 Mouse](#)  
[Swiss-port # P21844 Mouse](#)

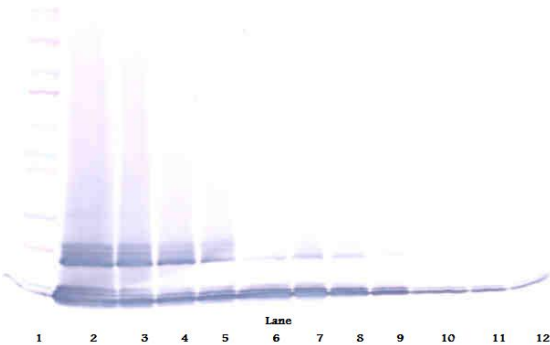
Gene Symbol Cma1  
Gene Full Name chymase 1, mast cell

Background This gene encodes a chymotryptic serine proteinase that belongs to the peptidase family S1. It is expressed in mast cells and is thought to function in the degradation of the extracellular matrix, the regulation of submucosal gland secretion, and the generation of vasoactive peptides. In the heart and blood vessels, this protein, rather than angiotensin converting enzyme, is largely responsible for converting angiotensin I to the vasoactive peptide angiotensin II. Alternative splicing results in multiple variants. [provided by RefSeq, Apr 2015]

Function Major secreted protease of mast cells with suspected roles in vasoactive peptide generation, extracellular matrix degradation, and regulation of gland secretion. [UniProt]

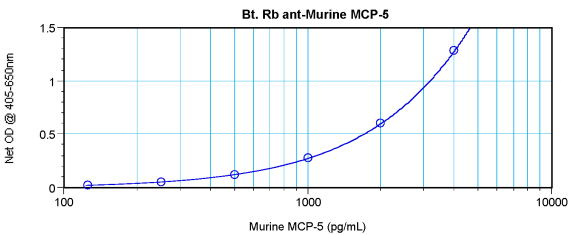
Calculated Mw 27 kDa

Images



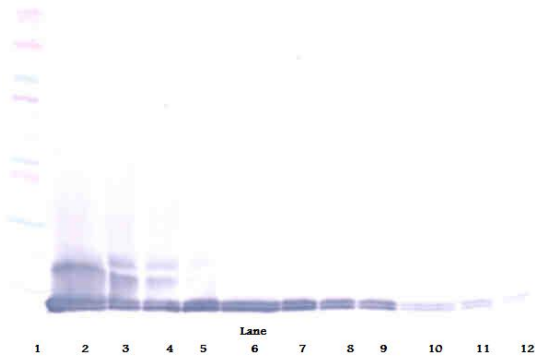
ARG66020 anti-MCP5 / Mast cell chymase antibody (Biotin) WB image

Western blot: 250 - 0.24 ng of Mouse MCP-5 stained with ARG66020 anti-MCP5 / Mast cell chymase antibody (Biotin), under non-reducing conditions.



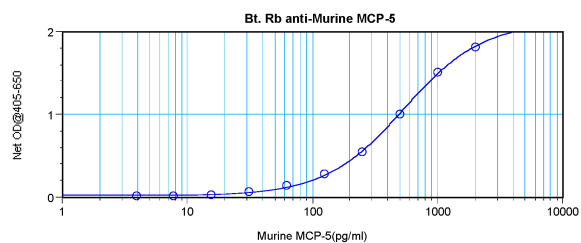
ARG66020 anti-MCP5 / Mast cell chymase antibody (Biotin) standard curve image

Direct ELISA: ARG66020 anti-MCP5 / Mast cell chymase antibody (Biotin) at 0.25 - 1.0 µg/ml results of a typical standard run with optical density reading at 405 - 650 nm.



ARG66020 anti-MCP5 / Mast cell chymase antibody (Biotin) WB image

Western blot: 250 - 0.24 ng of Mouse MCP-5 stained with ARG66020 anti-MCP5 / Mast cell chymase antibody (Biotin), under reducing conditions.



ARG66020 anti-MCP5 / Mast cell chymase antibody (Biotin) standard curve image

Sandwich ELISA: ARG66020 anti-MCP5 / Mast cell chymase antibody (Biotin) as a detection antibody at 0.25 - 1.0 µg/ml combined with ARG66019 anti-MCP5 antibody as a capture antibody. Results of a typical standard run with optical density reading at 405 - 650 nm.