

ARG66027 anti-IL17F antibody

Package: 50 µg
Store at: -20°C

Summary

Product Description	Rabbit Polyclonal antibody recognizes IL17F
Tested Reactivity	Hu
Tested Application	ELISA, Neut, WB
Host	Rabbit
Clonality	Polyclonal
Isotype	IgG
Target Name	IL17F
Species	Human
Immunogen	E. coli derived recombinant Human IL17F. (MRKIPKVGHT FFQKPESCPP VPGGSMKLDI GIINENQRVS MSRNIESRST SPWNYTVTWD PNRYPSEVVQ AQCRNLGCIN AQGKEDISMN SVPIQQETLV VRRKHQGC SV SFQLEKVLVT VGCTCVTPVI HHVQ)
Conjugation	Un-conjugated
Alternate Names	Interleukin-17F; IL-17F; CANDF6; ML-1; ML1; Cytokine ML-1

Application Instructions

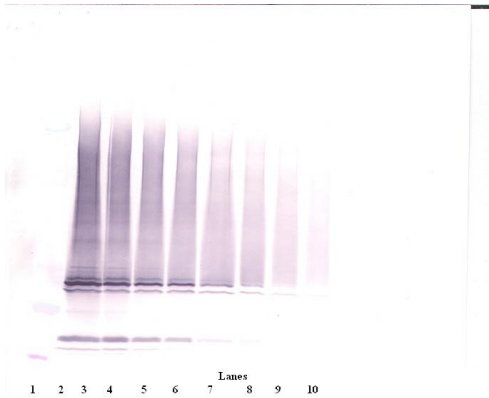
Application table	Application	Dilution
	ELISA	Sandwich: 0.5 - 2.0 µg/ml with ARG66028 as a detection antibody
	Neut	0.9 - 1.2 µg/ml (To yield [ND50] of the biological activity of hIL-17F (50.0 ng/ml))
	WB	0.1 - 0.2 µg/ml
Application Note	* The dilutions indicate recommended starting dilutions and the optimal dilutions or concentrations should be determined by the scientist.	

Properties

Form	Liquid
Purification	Affinity purification with immunogen.
Buffer	PBS (pH 7.2)
Concentration	1 mg/ml
Storage instruction	For continuous use, store undiluted antibody at 2-8°C for up to a week. For long-term storage, aliquot and store at -20°C or below. Storage in frost free freezers is not recommended. Avoid repeated freeze/thaw cycles. Suggest spin the vial prior to opening. The antibody solution should be gently mixed before use.
Note	For laboratory research only, not for drug, diagnostic or other use.

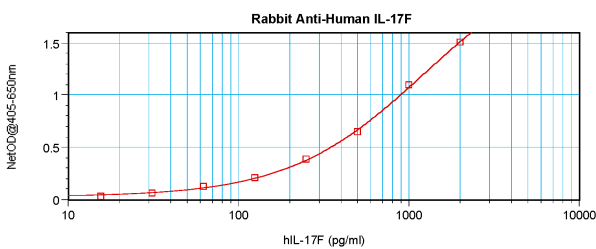
Database links	GeneID: 112744 Human Swiss-port # Q96PD4 Human
Gene Symbol	IL17F
Gene Full Name	interleukin 17F
Background	The protein encoded by this gene is a cytokine that shares sequence similarity with IL17. This cytokine is expressed by activated T cells, and has been shown to stimulate the production of several other cytokines, including IL6, IL8, and CSF2/GM-CSF. This cytokine is also found to inhibit the angiogenesis of endothelial cells and induce endothelial cells to produce IL2, TGFB1/TGFB, and monocyte chemoattractant protein-1. [provided by RefSeq, Jul 2008]
Function	Stimulates the production of other cytokines such as IL-6, IL-8 and granulocyte colony-stimulating factor, and can regulate cartilage matrix turnover. Stimulates PBMC and T-cell proliferation. Inhibits angiogenesis. [UniProt]
Calculated Mw	18 kDa

Images



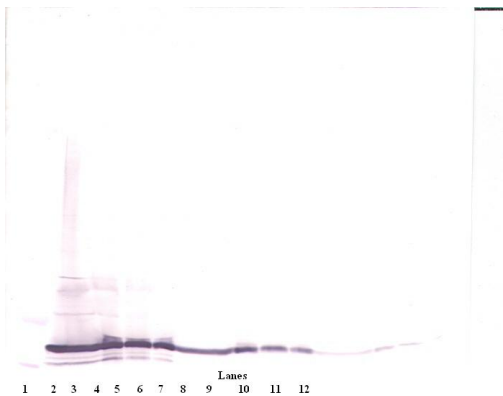
ARG66027 anti-IL17F antibody WB image

Western blot: 250 - 0.24 ng of Human IL-17F stained with ARG66027 anti-IL17F antibody, under non-reducing conditions.



ARG66027 anti-IL17F antibody standard curve image

Sandwich ELISA: ARG66027 anti-IL17F antibody as a capture antibody at 0.5 - 2.0 µg/ml combined with ARG66028 anti-IL17F antibody (Biotin) as a detection antibody. Results of a typical standard run with optical density reading at 405 - 650 nm.



ARG66027 anti-IL17F antibody WB image

Western blot: 250 - 0.24 ng of Human IL-17F stained with ARG66027 anti-IL17F antibody, under reducing conditions.