

ARG66028 anti-IL17F antibody (Biotin)

Package: 50 µg
Store at: 4°C

Summary

Product Description	Biotin-conjugated Rabbit Polyclonal antibody recognizes IL17F
Tested Reactivity	Hu
Tested Application	ELISA, WB
Host	Rabbit
Clonality	Polyclonal
Isotype	IgG
Target Name	IL17F
Species	Human
Immunogen	E. coli derived recombinant Human IL17F. (MRKIPKVGHT FFQKPESCPP VPGGSMKLDI GIINENQRVS MSRNIESRST SPWNYTVTWD PNRYPSEVVQ AQCRNLGCIN AQGKEDISMN SVPIQQETLV VRRKHQGC SV SFQLEKVLVT VGCTCVTPVI HHVQ)
Conjugation	Biotin
Alternate Names	Interleukin-17F; IL-17F; CANDF6; ML-1; ML1; Cytokine ML-1

Application Instructions

Application table	Application	Dilution
	ELISA	Direct: 0.25 - 1.0 µg/ml Sandwich: 0.25 - 1.0 µg/ml with ARG66027 as a capture antibody
	WB	0.1 - 0.2 µg/ml
Application Note	* The dilutions indicate recommended starting dilutions and the optimal dilutions or concentrations should be determined by the scientist.	

Properties

Form	Liquid
Purification	Purified by affinity chromatography.
Buffer	PBS (pH 7.2)
Concentration	1 mg/ml
Storage instruction	Aliquot and store in the dark at 2-8°C. Keep protected from prolonged exposure to light. Avoid repeated freeze/thaw cycles. Suggest spin the vial prior to opening. The antibody solution should be gently mixed before use.
Note	For laboratory research only, not for drug, diagnostic or other use.

Bioinformation

Database links [GeneID: 112744 Human](#)
[Swiss-port # Q96PD4 Human](#)

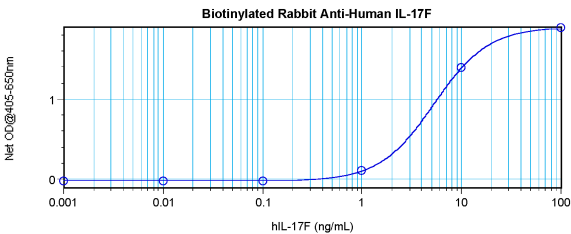
Gene Symbol IL17F
Gene Full Name interleukin 17F

Background The protein encoded by this gene is a cytokine that shares sequence similarity with IL17. This cytokine is expressed by activated T cells, and has been shown to stimulate the production of several other cytokines, including IL6, IL8, and CSF2/GM-CSF. This cytokine is also found to inhibit the angiogenesis of endothelial cells and induce endothelial cells to produce IL2, TGFβ1/TGFB, and monocyte chemoattractant protein-1. [provided by RefSeq, Jul 2008]

Function Stimulates the production of other cytokines such as IL-6, IL-8 and granulocyte colony-stimulating factor, and can regulate cartilage matrix turnover. Stimulates PBMC and T-cell proliferation. Inhibits angiogenesis. [UniProt]

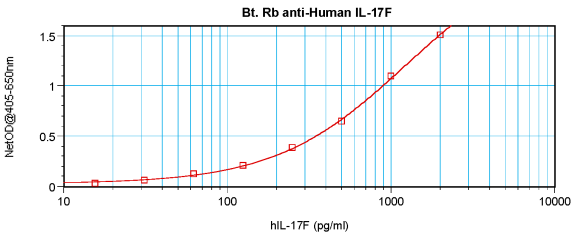
Calculated Mw 18 kDa

Images



ARG66028 anti-IL17F antibody (Biotin) standard curve image

Direct ELISA: ARG66028 anti-IL17F antibody (Biotin) at 0.25 - 1.0 µg/ml results of a typical standard run with optical density reading at 405 - 650 nm.



ARG66028 anti-IL17F antibody (Biotin) standard curve image

Sandwich ELISA: ARG66028 anti-IL17F antibody (Biotin) as a detection antibody at 0.25 - 1.0 µg/ml combined with ARG66027 anti-IL17F antibody as a capture antibody. Results of a typical standard run with optical density reading at 405 - 650 nm.