

ARG66029 anti-CXCL5 antibody

Package: 50 µg
Store at: -20°C

Summary

Product Description	Rabbit Polyclonal antibody recognizes CXCL5
Tested Reactivity	Hu
Tested Application	ELISA, IHC-P, WB
Host	Rabbit
Clonality	Polyclonal
Isotype	IgG
Target Name	CXCL5
Species	Human
Immunogen	E. coli derived recombinant around aa. 5-78 of Human CXCL5. (AAVLRELRCV CLQTTQGVHP KMISNLQVFA IGPQCSKVEV VASLKNGKEI CLDPEAPFLK KVIQKILDGG NKEN)
Conjugation	Un-conjugated
Alternate Names	Neutrophil-activating peptide ENA-78; Epithelial-derived neutrophil-activating protein 78; SCYB5; Small-inducible cytokine B5; C-X-C motif chemokine 5; 9-78; 8-78; 1-78; ENA-78

Application Instructions

Application table	Application	Dilution
	ELISA	Sandwich: 0.5 - 2.0 µg/ml with ARG66030 as a detection antibody
	IHC-P	1 - 2 µg/ml
	WB	0.1 - 0.2 µg/ml
Application Note	IHC-P: Antigen Retrieval: Boil tissue section in Sodium Citrate buffer (pH 6.0) followed by cooling at RT for 20 min. * The dilutions indicate recommended starting dilutions and the optimal dilutions or concentrations should be determined by the scientist.	

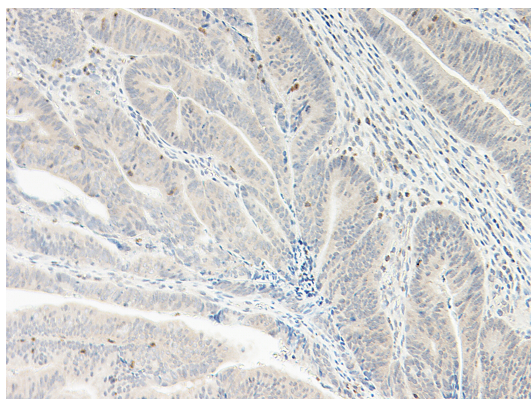
Properties

Form	Liquid
Purification	Affinity purification with immunogen.
Buffer	PBS (pH 7.2)
Concentration	1 mg/ml
Storage instruction	For continuous use, store undiluted antibody at 2-8°C for up to a week. For long-term storage, aliquot and store at -20°C or below. Storage in frost free freezers is not recommended. Avoid repeated freeze/thaw cycles. Suggest spin the vial prior to opening. The antibody solution should be gently mixed before use.
Note	For laboratory research only, not for drug, diagnostic or other use.

Bioinformation

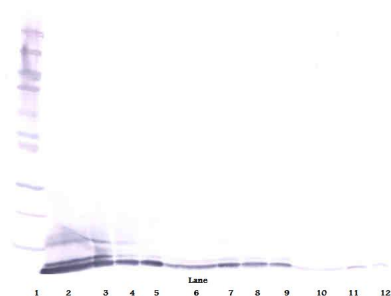
Database links	GeneID: 6374 Human Swiss-port # P42830 Human
Gene Symbol	CXCL5
Gene Full Name	chemokine (C-X-C motif) ligand 5
Background	This gene encodes a protein that is a member of the CXC subfamily of chemokines. Chemokines, which recruit and activate leukocytes, are classified by function (inflammatory or homeostatic) or by structure. This protein is proposed to bind the G-protein coupled receptor chemokine (C-X-C motif) receptor 2 to recruit neutrophils, to promote angiogenesis and to remodel connective tissues. This protein is thought to play a role in cancer cell proliferation, migration, and invasion. [provided by RefSeq, May 2013]
Function	Involved in neutrophil activation. In vitro, ENA-78(8-78) and ENA-78(9-78) show a threefold higher chemotactic activity for neutrophil granulocytes. [UniProt]
Calculated Mw	12 kDa
PTM	N-terminal processed forms ENA-78(8-78) and ENA-78(9-78) are produced by proteolytic cleavage after secretion from peripheral blood monocytes.

Images



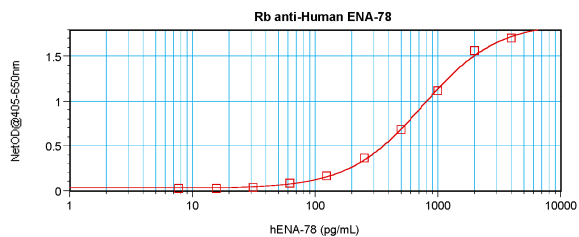
ARG66029 anti-CXCL5 antibody IHC-P image

Immunohistochemistry: Formalin-fixed and paraffin-embedded sections of Human colon and rectum adenocarcinoma. The recommended ARG66029 anti-CXCL5 antibody concentration is 1.0 µg/ml - 2.0 µg/ml with an overnight incubation at 4°C. An HRP-labeled polymer detection system was used with a DAB chromogen. Antigen Retrieval: Boil tissue section in Sodium Citrate buffer (pH 6.0) followed by cooling at RT for 20 min.



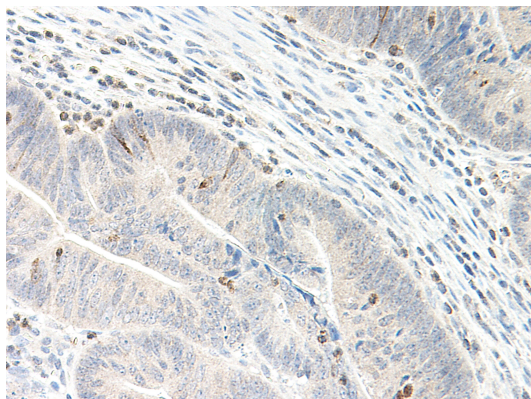
ARG66029 anti-CXCL5 antibody WB image

Western blot: 250 - 0.24 ng of Human ENA-78 stained with ARG66029 anti-CXCL5 antibody, under reducing conditions.



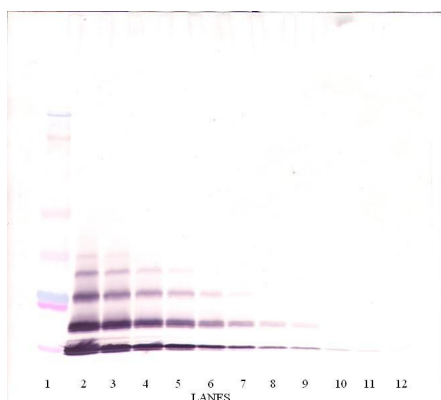
ARG66029 anti-CXCL5 antibody standard curve image

Sandwich ELISA: ARG66029 anti-CXCL5 antibody as a capture antibody at 0.5 - 2.0 µg/ml combined with ARG66030 anti-CXCL5 antibody (Biotin) as a detection antibody. Results of a typical standard run with optical density reading at 405 - 650 nm.



ARG66029 anti-CXCL5 antibody IHC-P image

Immunohistochemistry: Formalin-fixed and paraffin-embedded sections of Human colon and rectum adenocarcinoma. The recommended ARG66029 anti-CXCL5 antibody concentration is 1.0 µg/ml - 2.0 µg/ml with an overnight incubation at 4°C. An HRP-labeled polymer detection system was used with a DAB chromogen. Antigen Retrieval: Boil tissue section in Sodium Citrate buffer (pH 6.0) followed by cooling at RT for 20 min.



ARG66029 anti-CXCL5 antibody WB image

Western blot: 250 - 0.24 ng of Human ENA-78 stained with ARG66029 anti-CXCL5 antibody, under non-reducing conditions.