

ARG66043 anti-CCL16 / LEC antibody

Package: 50 µg
Store at: -20°C

Summary

Product Description	Goat Polyclonal antibody recognizes CCL16 / LEC
Tested Reactivity	Hu, Ms
Tested Application	ELISA, WB
Host	Goat
Clonality	Polyclonal
Isotype	IgG
Target Name	CCL16 / LEC
Species	Human
Immunogen	E. coli derived recombinant Human CCL16 / LEC. (QPKVPEWVNT PSTCCLKYYE KVLPRRLVVG YRKALNCHLP AIIFVTKRNR EVCTNPNDW VQEYIKDPNL PLLPTRNLST VKIITAKNGQ PQLLSQ)
Conjugation	Un-conjugated
Alternate Names	CKb12; HCC-4; LEC; Monotactin-1; SCYA16; Chemokine LEC; MTN-1; SCYL4; Mtn-1; Lymphocyte and monocyte chemoattractant; Small-inducible cytokine A16; Liver-expressed chemokine; IL-10-inducible chemokine; C-C motif chemokine 16; NCC4; LCC-1; ILINCK; LMC; Chemokine CC-4; NCC-4

Application Instructions

Application table	Application	Dilution
	ELISA	Sandwich: 0.5 - 2.0 µg/ml with ARG66044 as a detection antibody
	WB	0.1 - 0.2 µg/ml
Application Note	* The dilutions indicate recommended starting dilutions and the optimal dilutions or concentrations should be determined by the scientist.	

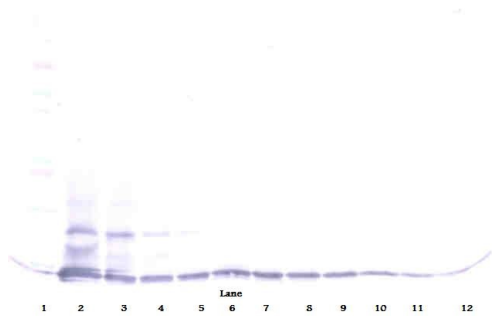
Properties

Form	Liquid
Purification	Affinity purification with immunogen.
Buffer	PBS (pH 7.2)
Concentration	1 mg/ml
Storage instruction	For continuous use, store undiluted antibody at 2-8°C for up to a week. For long-term storage, aliquot and store at -20°C or below. Storage in frost free freezers is not recommended. Avoid repeated freeze/thaw cycles. Suggest spin the vial prior to opening. The antibody solution should be gently mixed before use.
Note	For laboratory research only, not for drug, diagnostic or other use.

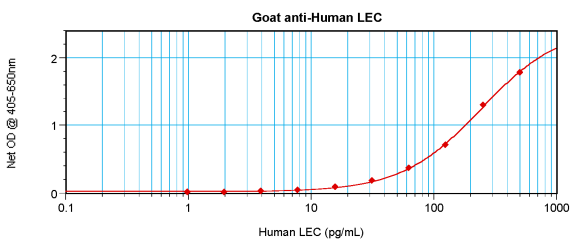
Database links	GeneID: 6360 Human Swiss-port # O15467 Human
Gene Symbol	CCL16
Gene Full Name	chemokine (C-C motif) ligand 16
Background	This gene is one of several cytokine genes clustered on the q-arm of chromosome 17. Cytokines are a family of secreted proteins involved in immunoregulatory and inflammatory processes. The CC cytokines are proteins characterized by two adjacent cysteines. The cytokine encoded by this gene displays chemotactic activity for lymphocytes and monocytes but not for neutrophils. This cytokine also shows a potent myelosuppressive activity and suppresses proliferation of myeloid progenitor cells. The expression of this gene is upregulated by IL-10. [provided by RefSeq, Jul 2008]
Function	Shows chemotactic activity for lymphocytes and monocytes but not neutrophils. Also shows potent myelosuppressive activity, suppresses proliferation of myeloid progenitor cells. Recombinant SCYA16 shows chemotactic activity for monocytes and THP-1 monocytes, but not for resting lymphocytes and neutrophils. Induces a calcium flux in THP-1 cells that were desensitized by prior expression to RANTES. [UniProt]
Calculated Mw	14 kDa

Images

ARG66043 anti-CCL16 / LEC antibody WB image



Western blot: 250 - 0.24 ng (left to right) of hLEC recombinant protein (left to right) stained with ARG66043 anti-CCL16 / LEC antibody under reducing conditions.



ARG66043 anti-CCL16 / LEC antibody standard curve image

Sandwich ELISA: ARG66043 anti-CCL16 / LEC antibody as a capture antibody at 0.5 - 2.0 µg/ml combined with ARG66044 anti-CCL16 / LEC antibody (Biotin) as a detection antibody. Results of a typical standard run with optical density reading at 405 - 650 nm.

ARG66043 anti-CCL16 / LEC antibody WB image

Western blot: 250 - 0.24 ng (left to right) of hLEC recombinant protein (left to right) stained with ARG66043 anti-CCL16 / LEC antibody under non-reducing conditions.

