

## ARG66050 anti-TECK antibody (Biotin)

Package: 50 µg  
Store at: 4°C

### Summary

Product Description	Biotin-conjugated Rabbit Polyclonal antibody recognizes TECK
Tested Reactivity	Hu
Tested Application	ELISA, WB
Host	Rabbit
Clonality	Polyclonal
Isotype	IgG
Target Name	TECK
Species	Human
Immunogen	E. coli derived recombinant Human TECK. (QGVFEDCCLA YHYPIGWAVL RRAWTYRIQE VSGSCNLPAA IFYLPKRHRK VCGNPKSREV QRAMKLLDAR NKVFAKLHHN MQTFQAGPHA VKKLSSGNSK LSSSKFSNPI SSSRKNVSLI ISANSGL)
Conjugation	Biotin
Alternate Names	Chemokine TECK; Ckb15; SCYA25; Thymus-expressed chemokine; Small-inducible cytokine A25; TECK; C-C motif chemokine 25

### Application Instructions

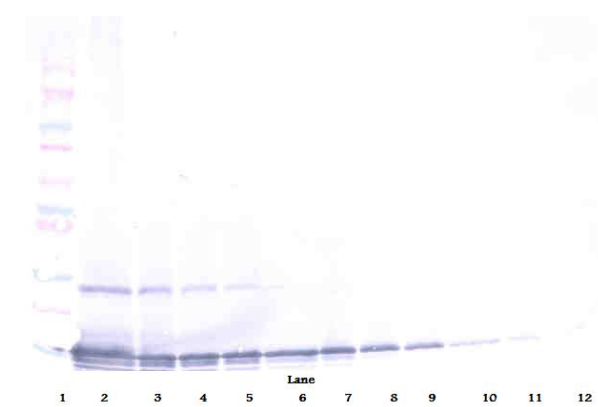
Application table	Application	Dilution
	ELISA	Direct: 0.25 - 1.0 µg/ml Sandwich: 0.25 - 1.0 µg/ml with ARG66049 as a capture antibody
	WB	0.1 - 0.2 µg/ml
Application Note	* The dilutions indicate recommended starting dilutions and the optimal dilutions or concentrations should be determined by the scientist.	

### Properties

Form	Liquid
Purification	Purified by affinity chromatography.
Buffer	PBS (pH 7.2)
Concentration	1 mg/ml
Storage instruction	Aliquot and store in the dark at 2-8°C. Keep protected from prolonged exposure to light. Avoid repeated freeze/thaw cycles. Suggest spin the vial prior to opening. The antibody solution should be gently mixed before use.
Note	For laboratory research only, not for drug, diagnostic or other use.

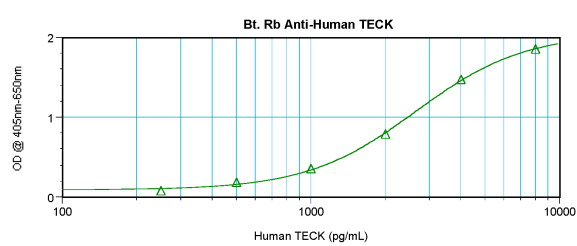
Database links	<a href="#">GeneID: 6370 Human</a> <a href="#">Swiss-port # O15444 Human</a>
Gene Symbol	CCL25
Gene Full Name	chemokine (C-C motif) ligand 25
Background	This antimicrobial gene belongs to the subfamily of small cytokine CC genes. Cytokines are a family of secreted proteins involved in immunoregulatory and inflammatory processes. The CC cytokines are proteins characterized by two adjacent cysteines. The cytokine encoded by this gene displays chemotactic activity for dendritic cells, thymocytes, and activated macrophages but is inactive on peripheral blood lymphocytes and neutrophils. The product of this gene binds to chemokine receptor CCR9. Alternative splicing results in multiple transcript variants. [provided by RefSeq, Sep 2014]
Function	Potentially involved in T-cell development. Recombinant protein shows chemotactic activity on thymocytes, macrophages, THP-1 cells, and dendritics cells but is inactive on peripheral blood lymphocytes and neutrophils. Binds to CCR9. Isoform 2 is an antagonist of isoform 1. Binds to atypical chemokine receptor ACKR4 and mediates the recruitment of beta-arrestin (ARRB1/2) to ACKR4. [UniProt]
Calculated Mw	17 kDa

Images



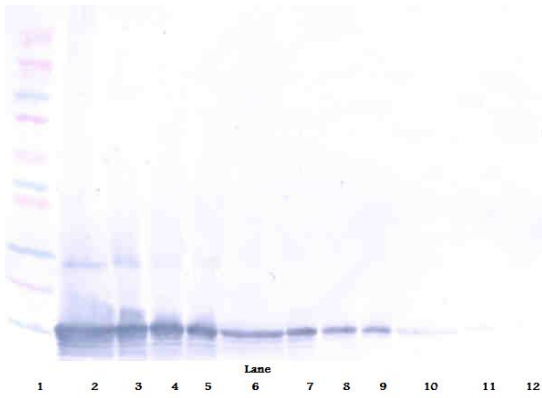
ARG66050 anti-TECK antibody (Biotin) WB image

Western blot: 250 - 0.24 ng of Human TECK stained with ARG66050 anti-TECK antibody (Biotin), under non-reducing conditions.



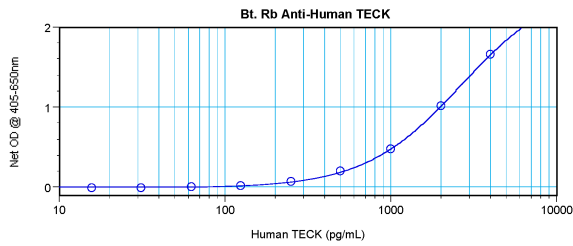
ARG66050 anti-TECK antibody (Biotin) standard curve image

Direct ELISA: ARG66050 anti-TECK antibody (Biotin) at 0.25 - 1.0 µg/ml results of a typical standard run with optical density reading at 405 - 650 nm.



ARG66050 anti-TECK antibody (Biotin) WB image

Western blot: 250 - 0.24 ng of Human TECK stained with ARG66050 anti-TECK antibody (Biotin), under reducing conditions.



ARG66050 anti-TECK antibody (Biotin) standard curve image

Sandwich ELISA: ARG66050 anti-TECK antibody (Biotin) as a detection antibody at 0.25 - 1.0 µg/ml combined with ARG66049 anti-TECK antibody as a capture antibody. Results of a typical standard run with optical density reading at 405 - 650 nm.