

ARG66080 anti-LD78 beta antibody (Biotin)

Package: 50 µg
Store at: 4°C

Summary

Product Description	Biotin-conjugated Goat Polyclonal antibody recognizes LD78 beta
Tested Reactivity	Hu
Tested Application	ELISA, WB
Host	Goat
Clonality	Polyclonal
Isotype	IgG
Target Name	LD78 beta
Species	Human
Immunogen	E. coli derived recombinant Human LD78 beta. (APLAADTPTA CCFSYTSRQI PQNFIADYFE TSSQCSKPSV IFLTKRGRQV CADPSEEWVQ KYVSDLELSA)
Conjugation	Biotin
Alternate Names	C-C motif chemokine 3-like 1; Small-inducible cytokine A3-like 1; D17S1718; SCYA3L1; 5-70; 464.2; Tonsillar lymphocyte LD78 beta protein; LD78BETA; PAT 464.2; LD78-beta; G0/G1 switch regulatory protein 19-2; 1-70; 3-70; SCYA3L; G0S19-2; LD78

Application Instructions

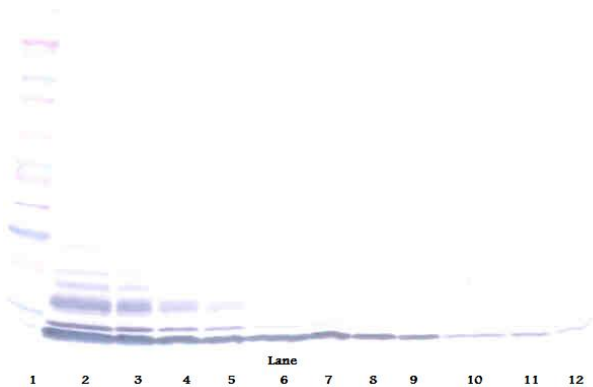
Application table	Application	Dilution
	ELISA	Direct: 0.25 - 1.0 µg/ml Sandwich: 0.25 - 1.0 µg/ml with ARG66079 as a capture antibody
	WB	0.1 - 0.2 µg/ml
Application Note	* The dilutions indicate recommended starting dilutions and the optimal dilutions or concentrations should be determined by the scientist.	

Properties

Form	Liquid
Purification	Purified by affinity chromatography.
Buffer	PBS (pH 7.2)
Concentration	1 mg/ml
Storage instruction	Aliquot and store in the dark at 2-8°C. Keep protected from prolonged exposure to light. Avoid repeated freeze/thaw cycles. Suggest spin the vial prior to opening. The antibody solution should be gently mixed before use.
Note	For laboratory research only, not for drug, diagnostic or other use.

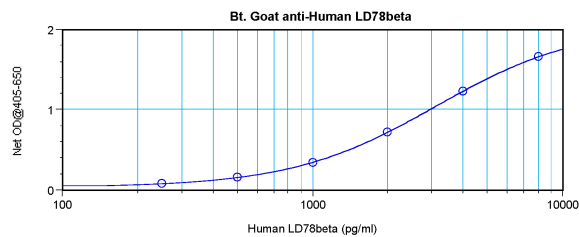
Gene Symbol	CCL3L3
Gene Full Name	chemokine (C-C motif) ligand 3-like 3
Background	<p>This gene is one of several cytokine genes that are clustered on the q-arm of chromosome 17. Cytokines are a family of secreted proteins that function in inflammatory and immunoregulatory processes. The protein encoded by this gene binds to several chemokine receptors, including chemokine binding protein 2 and chemokine (C-C motif) receptor 5 (CCR5). CCR5 is a co-receptor for HIV, and binding of this protein to CCR5 inhibits HIV entry. The copy number of this gene varies among individuals, where most individuals have one to six copies, and a minority of individuals have zero or more than six copies. There are conflicting reports about copy number variation of this gene and its correlation to disease susceptibility.[provided by RefSeq, Apr 2014]</p>
Function	<p>Chemotactic for lymphocytes and monocytes. Is a ligand for CCR1, CCR3 and CCR5. Is an inhibitor of HIV-1-infection. The processed form LD78-beta(3-70) shows a 20-fold to 30-fold higher chemotactic activity and is a very potent inhibitor of HIV-1-infection. LD78-beta(3-70) is also a ligand for CCR1, CCR3 and CCR5. [UniProt]</p>
Calculated Mw	10 kDa
PTM	<p>The N-terminal processed forms LD78-beta(3-70) and LD78-beta(5-70) are produced by proteolytic cleavage after secretion from peripheral blood monocytes. The cleavage to yield LD78-beta(3-70) is probably achieved by DPP4.</p>

Images



ARG66080 anti-LD78 beta antibody (Biotin) WB image

Western blot: 250 - 0.24 ng of Human LD78β stained with ARG66080 anti-LD78 beta antibody (Biotin), under non-reducing conditions.

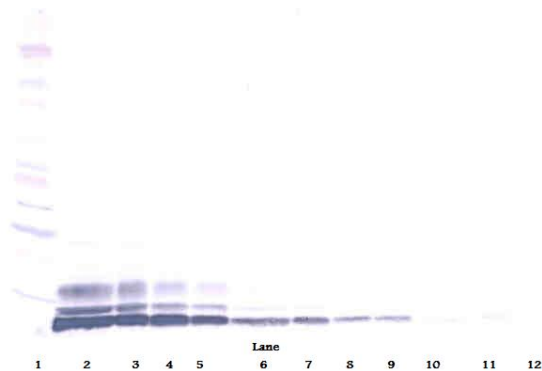


ARG66080 anti-LD78 beta antibody (Biotin) standard curve image

Direct ELISA: ARG66080 anti-LD78 beta antibody (Biotin) at 0.25 - 1.0 µg/ml results of a typical standard run with optical density reading at 405 - 650 nm.

ARG66080 anti-LD78 beta antibody (Biotin) WB image

Western blot: 250 - 0.24 ng of Human LD78 β stained with ARG66080 anti-LD78 beta antibody (Biotin), under reducing conditions.



ARG66080 anti-LD78 beta antibody (Biotin) standard curve image

Sandwich ELISA: ARG66080 anti-LD78 beta antibody (Biotin) as a detection antibody at 0.25 - 1.0 μ g/ml combined with ARG66079 anti-LD78 beta antibody as a capture antibody. Results of a typical standard run with optical density reading at 405 - 650 nm.

