

ARG66092 anti-CCL4 / MIP1 beta antibody

Package: 50 µg
Store at: -20°C

Summary

Product Description	Rabbit Polyclonal antibody recognizes CCL4 / MIP1 beta
Tested Reactivity	Ms
Tested Application	ELISA, Neut, WB
Host	Rabbit
Clonality	Polyclonal
Isotype	IgG
Target Name	CCL4 / MIP1 beta
Species	Mouse
Immunogen	E. coli derived recombinant Mouse CCL4 / MIP1 beta. (APMGSDPPTS CCFSYTSRQL HRSFVMDYYE TSSLCSKPAV VFLTKRGRQI CANPSEPWVT EYMSDLELN)
Conjugation	Un-conjugated
Alternate Names	ACT2; G-26; HC21; LAG1; LAG-1; MIP1B; SCYA2; SCYA4; MIP1B1; AT744.1; MIP-1-beta

Application Instructions

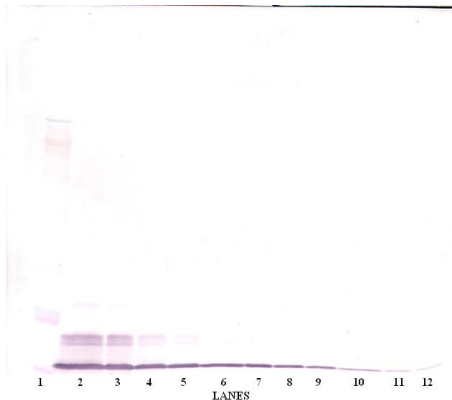
Application table	Application	Dilution
	ELISA	Sandwich: 0.5 - 2.0 µg/ml with ARG66093 as a detection antibody
	Neut	8.0 - 10.0 µg/ml (To yield [ND50] of the biological activity of Murine MIP-1β (100.0 ng/ml))
	WB	0.1 - 0.2 µg/ml
Application Note	* The dilutions indicate recommended starting dilutions and the optimal dilutions or concentrations should be determined by the scientist.	

Properties

Form	Liquid
Purification	Affinity purification with immunogen.
Buffer	PBS (pH 7.2)
Concentration	1 mg/ml
Storage instruction	For continuous use, store undiluted antibody at 2-8°C for up to a week. For long-term storage, aliquot and store at -20°C or below. Storage in frost free freezers is not recommended. Avoid repeated freeze/thaw cycles. Suggest spin the vial prior to opening. The antibody solution should be gently mixed before use.
Note	For laboratory research only, not for drug, diagnostic or other use.

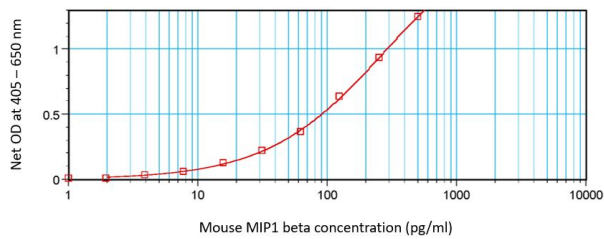
Database links	GeneID: 20303 Mouse Swiss-port # P14097 Mouse
Gene Symbol	Ccl4
Gene Full Name	chemokine (C-C motif) ligand 4
Background	The protein encoded by this gene is a mitogen-inducible monokine and is one of the major HIV-suppressive factors produced by CD8+ T-cells. The encoded protein is secreted and has chemokinetic and inflammatory functions. [provided by RefSeq, Dec 2012]
Function	Monokine with inflammatory and chemokinetic properties. Binds to CCR5. One of the major HIV-suppressive factors produced by CD8+ T-cells. Recombinant MIP-1-beta induces a dose-dependent inhibition of different strains of HIV-1, HIV-2, and simian immunodeficiency virus (SIV). The processed form MIP-1-beta(3-69) retains the abilities to induce down-modulation of surface expression of the chemokine receptor CCR5 and to inhibit the CCR5-mediated entry of HIV-1 in T-cells. MIP-1-beta(3-69) is also a ligand for CCR1 and CCR2 isoform B. [UniProt]
Calculated Mw	10 kDa

Images



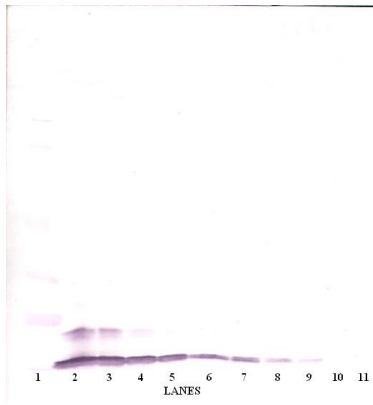
ARG66092 anti-CCL4 / MIP1 beta antibody WB image

Western blot: 250 - 0.24 ng of Mouse MIP-1 β stained with ARG66092 anti-CCL4 / MIP1 beta antibody, under non-reducing conditions.



ARG66092 anti-CCL4 / MIP1 beta antibody standard curve image

Sandwich ELISA: ARG66092 anti-CCL4 / MIP1 beta antibody as a capture antibody at 0.5 - 2.0 μ g/ml combined with ARG66093 anti-CCL4 / MCP1 beta antibody (Biotin) as a detection antibody. Results of a typical standard run with optical density reading at 405 - 650 nm.



ARG66092 anti-CCL4 / MIP1 beta antibody WB image

Western blot: 250 - 0.24 ng of Mouse MIP-1 β stained with ARG66092 anti-CCL4 / MIP1 beta antibody, under reducing conditions.