

ARG66107 anti-TL1A antibody (Biotin)

Package: 50 µg
Store at: 4°C

Summary

Product Description	Biotin-conjugated Rabbit Polyclonal antibody recognizes TL1A
Tested Reactivity	Hu
Tested Application	ELISA
Host	Rabbit
Clonality	Polyclonal
Isotype	IgG
Target Name	TL1A
Species	Human
Immunogen	E. coli derived recombinant Human TL1A. (QLRAQGEASV QFQALKGQEF APSHQQVYAP LRADGDKPRA HLTVVRQTPT QHFKNQFPAL HWEHELGLAF TKNRMNYTNK FLLIPESGDY FIYSQVTFRG MTSECSEIRQ AGRPNKPDSI TVVITKVTDS YPEPTQLLMG TKSVCEVGSN WFQPIYL GAM FSLQEGDKLM VNVSDISLVD YTKEDKTFFG AFLL)
Conjugation	Biotin
Alternate Names	TL1; Vascular endothelial cell growth inhibitor; TL1A; VEGI192A; TNF ligand-related molecule 1; VEGI; Tumor necrosis factor ligand superfamily member 15

Application Instructions

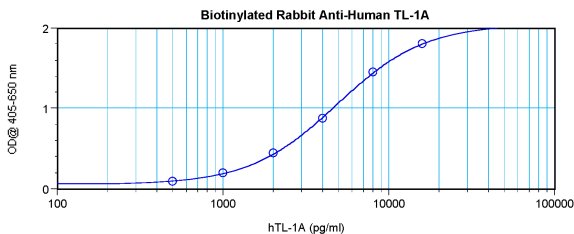
Application table	Application	Dilution
	ELISA	Direct: 0.25 - 1.0 µg/ml Sandwich: 0.25 - 1.0 µg/ml with ARG66106 as a capture antibody
Application Note	* The dilutions indicate recommended starting dilutions and the optimal dilutions or concentrations should be determined by the scientist.	

Properties

Form	Liquid
Purification	Purified by affinity chromatography.
Buffer	PBS (pH 7.2)
Concentration	1 mg/ml
Storage instruction	Aliquot and store in the dark at 2-8°C. Keep protected from prolonged exposure to light. Avoid repeated freeze/thaw cycles. Suggest spin the vial prior to opening. The antibody solution should be gently mixed before use.
Note	For laboratory research only, not for drug, diagnostic or other use.

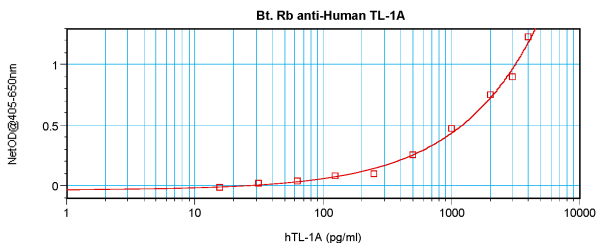
Database links	GeneID: 9966 Human Swiss-port # O95150 Human
Gene Symbol	TNFSF15
Gene Full Name	tumor necrosis factor (ligand) superfamily, member 15
Background	The protein encoded by this gene is a cytokine that belongs to the tumor necrosis factor (TNF) ligand family. This protein is abundantly expressed in endothelial cells, but is not expressed in either B or T cells. The expression of this protein is inducible by TNF and IL-1 alpha. This cytokine is a ligand for receptor TNFRSF25 and decoy receptor TNFRSF21/DR6. It can activate NF-kappaB and MAP kinases, and acts as an autocrine factor to induce apoptosis in endothelial cells. This cytokine is also found to inhibit endothelial cell proliferation, and thus may function as an angiogenesis inhibitor. Two transcript variants encoding different isoforms have been found for this gene. [provided by RefSeq, Feb 2011]
Function	Receptor for TNFRSF25 and TNFRSF6B. Mediates activation of NF-kappa-B. Inhibits vascular endothelial growth and angiogenesis (in vitro). Promotes activation of caspases and apoptosis. [UniProt]
Calculated Mw	28 kDa

Images



ARG66107 anti-TL1A antibody (Biotin) standard curve image

Direct ELISA: ARG66107 anti-TL1A antibody (Biotin) at 0.25 - 1.0 μ g/ml results of a typical standard run with optical density reading at 405 - 650 nm.



ARG66107 anti-TL1A antibody (Biotin) standard curve image

Sandwich ELISA: ARG66107 anti-TL1A antibody (Biotin) as a detection antibody at 0.25 - 1.0 μ g/ml combined with ARG66106 anti-TL1A antibody as a capture antibody. Results of a typical standard run with optical density reading at 405 - 650 nm.