

ARG66110 anti-Artemin antibody

Package: 50 µg
Store at: -20°C

Summary

Product Description	Rabbit Polyclonal antibody recognizes Artemin
Tested Reactivity	Hu
Tested Application	ELISA, WB
Host	Rabbit
Clonality	Polyclonal
Isotype	IgG
Target Name	Artemin
Species	Human
Immunogen	E. coli derived recombinant Human Artemin. (AGGPGSRARA AGARGCRLRS QLVPVRALGL GHRSDLVRF RFCSGSCRR RSPHDLSLAS LLGAGALRPP PGSRPVSQPC CRPTRYEAVS FMDVNSTWRT VDRLSATACG CLG)
Conjugation	Un-conjugated
Alternate Names	ENOVIN; Neublastin; EVN; Artemin; Enovin; NBN

Application Instructions

Application table	Application	Dilution
	ELISA	Sandwich: 0.5 - 2.0 µg/ml with ARG66111 as a detection antibody
	WB	0.1 - 0.2 µg/ml
Application Note	* The dilutions indicate recommended starting dilutions and the optimal dilutions or concentrations should be determined by the scientist.	

Properties

Form	Liquid
Purification	Affinity purification with immunogen.
Buffer	PBS (pH 7.2)
Concentration	1 mg/ml
Storage instruction	For continuous use, store undiluted antibody at 2-8°C for up to a week. For long-term storage, aliquot and store at -20°C or below. Storage in frost free freezers is not recommended. Avoid repeated freeze/thaw cycles. Suggest spin the vial prior to opening. The antibody solution should be gently mixed before use.
Note	For laboratory research only, not for drug, diagnostic or other use.

Bioinformation

Database links [GeneID: 9048 Human](#)
[Swiss-port # Q5T4W7 Human](#)

Gene Symbol ARTN

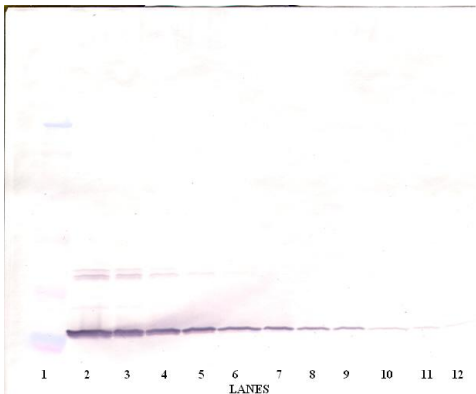
Gene Full Name artemin

Background The protein encoded by this gene is a member of the glial cell line-derived neurotrophic factor (GDNF) family of ligands which are a group of ligands within the TGF-beta superfamily of signaling molecules. GDNFs are unique in having neurotrophic properties and have potential use for gene therapy in neurodegenerative disease. Artemin has been shown in culture to support the survival of a number of peripheral neuron populations and at least one population of dopaminergic CNS neurons. Its role in the PNS and CNS is further substantiated by its expression pattern in the proximity of these neurons. This protein is a ligand for the RET receptor and uses GFR-alpha 3 as a coreceptor. Multiple transcript variants encoding different isoforms have been found for this gene. [provided by RefSeq, Oct 2008]

Function Ligand for the GFR-alpha-3-RET receptor complex but can also activate the GFR-alpha-1-RET receptor complex. Supports the survival of sensory and sympathetic peripheral neurons in culture and also supports the survival of dopaminergic neurons of the ventral mid-brain. Strong attractant of gut hematopoietic cells thus promoting the formation Peyer's patch-like structures, a major component of the gut-associated lymphoid tissue. [UniProt]

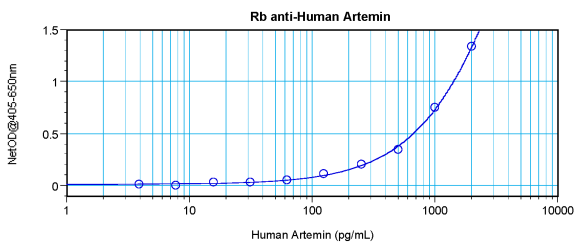
Calculated Mw 23 kDa

Images



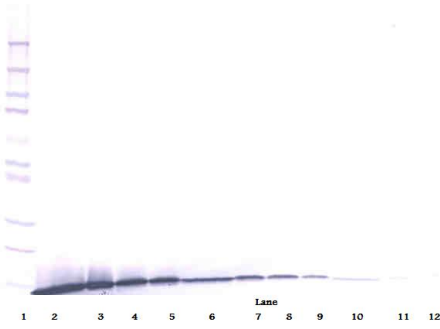
ARG66110 anti-Artemin antibody WB image

Western blot: 250 - 0.24 ng of Human Artemin stained with ARG66110 anti-Artemin antibody, under non-reducing conditions.



ARG66110 anti-Artemin antibody standard curve image

Sandwich ELISA: ARG66110 anti-Artemin antibody as a capture antibody at 0.5 - 2.0 µg/ml combined with ARG66111 anti-Artemin antibody (Biotin) as a detection antibody. Results of a typical standard run with optical density reading at 405 - 650 nm.



ARG66110 anti-Artemin antibody WB image

Western blot: 250 - 0.24 ng of Human Artemin stained with ARG66110 anti-Artemin antibody, under reducing conditions.