

ARG66111 anti-Artemin antibody (Biotin)

Package: 50 µg
Store at: 4°C

Summary

Product Description	Biotin-conjugated Rabbit Polyclonal antibody recognizes Artemin
Tested Reactivity	Hu
Tested Application	ELISA, WB
Host	Rabbit
Clonality	Polyclonal
Isotype	IgG
Target Name	Artemin
Species	Human
Immunogen	E. coli derived recombinant Human Artemin. (AGGPGSRARA AGARGCRLRS QLVPVRALGL GHRSDLVRF RFCSGSCRRA RSPHDLSLAS LLGAGALRPP PGSRPVSQPC CRPTRYEAVS FMDVNSTWRT VDRLSATACG CLG)
Conjugation	Biotin
Alternate Names	ENOVIN; Neublastin; EVN; Artemin; Enovin; NBN

Application Instructions

Application table	Application	Dilution
	ELISA	Direct: 0.25 - 1.0 µg/ml Sandwich: 0.25 - 1.0 µg/ml with ARG66110 as a capture antibody
	WB	0.1 - 0.2 µg/ml
Application Note	* The dilutions indicate recommended starting dilutions and the optimal dilutions or concentrations should be determined by the scientist.	

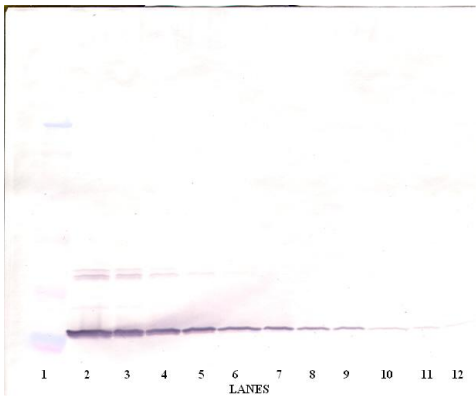
Properties

Form	Liquid
Purification	Purified by affinity chromatography.
Buffer	PBS (pH 7.2)
Concentration	1 mg/ml
Storage instruction	Aliquot and store in the dark at 2-8°C. Keep protected from prolonged exposure to light. Avoid repeated freeze/thaw cycles. Suggest spin the vial prior to opening. The antibody solution should be gently mixed before use.
Note	For laboratory research only, not for drug, diagnostic or other use.

Bioinformation

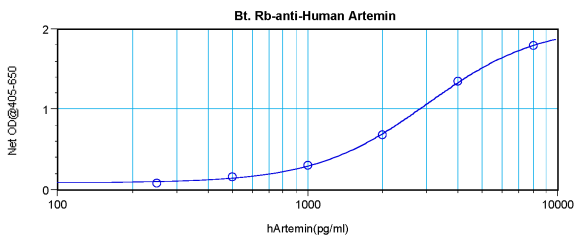
Database links	GeneID: 9048 Human Swiss-port # Q5T4W7 Human
Gene Symbol	ARTN
Gene Full Name	artemin
Background	<p>The protein encoded by this gene is a member of the glial cell line-derived neurotrophic factor (GDNF) family of ligands which are a group of ligands within the TGF-beta superfamily of signaling molecules. GDNFs are unique in having neurotrophic properties and have potential use for gene therapy in neurodegenerative disease. Artemin has been shown in culture to support the survival of a number of peripheral neuron populations and at least one population of dopaminergic CNS neurons. Its role in the PNS and CNS is further substantiated by its expression pattern in the proximity of these neurons. This protein is a ligand for the RET receptor and uses GFR-alpha 3 as a coreceptor. Multiple transcript variants encoding different isoforms have been found for this gene. [provided by RefSeq, Oct 2008]</p>
Function	<p>Ligand for the GFR-alpha-3-RET receptor complex but can also activate the GFR-alpha-1-RET receptor complex. Supports the survival of sensory and sympathetic peripheral neurons in culture and also supports the survival of dopaminergic neurons of the ventral mid-brain. Strong attractant of gut hematopoietic cells thus promoting the formation Peyer's patch-like structures, a major component of the gut-associated lymphoid tissue. [UniProt]</p>
Calculated Mw	23 kDa

Images



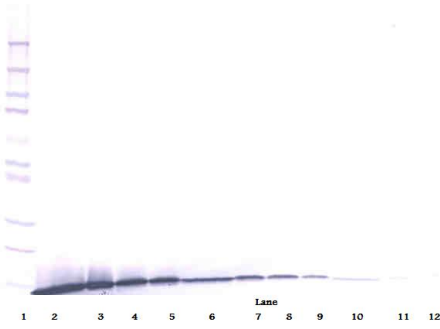
ARG66111 anti-Artemin antibody (Biotin) WB image

Western blot: 250 - 0.24 ng of Human Artemin stained with ARG66111 anti-Artemin antibody (Biotin), under non-reducing conditions.



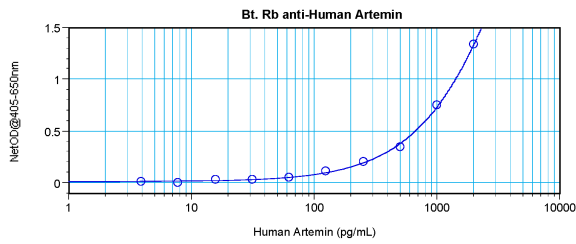
ARG66111 anti-Artemin antibody (Biotin) standard curve image

Direct ELISA: ARG66111 anti-Artemin antibody (Biotin) at 0.25 - 1.0 µg/ml results of a typical standard run with optical density reading at 405 - 650 nm.



ARG66111 anti-Artemin antibody (Biotin) WB image

Western blot: 250 - 0.24 ng of Human Artemin stained with ARG66111 anti-Artemin antibody (Biotin), under reducing conditions.



ARG66111 anti-Artemin antibody (Biotin) standard curve image

Sandwich ELISA: ARG66111 anti-Artemin antibody (Biotin) as a detection antibody at 0.25 - 1.0 $\mu\text{g}/\text{ml}$ combined with ARG66110 anti-Artemin antibody as a capture antibody. Results of a typical standard run with optical density reading at 405 - 650 nm.