

ARG66112 anti-IFN lambda 2 antibody

Package: 50 µg
Store at: -20°C

Summary

Product Description	Rabbit Polyclonal antibody recognizes IFN lambda 2
Tested Reactivity	Hu
Tested Application	ELISA, IHC-P, WB
Host	Rabbit
Clonality	Polyclonal
Isotype	IgG
Target Name	IFN lambda 2
Species	Human
Immunogen	E. coli derived recombinant Human IFN lambda 2. (PVARLHGALP DARGCHIAQF KSLSPQELQA FKRAKDALEE SLLKDCRCH SRLFPRTWDL RQLQVRERPM ALEAELALT KVLEATADTD PALVDVLDQP LHTLHHILSQ FRACIQPQPT AGPRTRGR LH HWLYRLQEAP KKESPGCLEA SVTFNLFRL TRDLNCVASG DLCV)
Conjugation	Un-conjugated
Alternate Names	Interleukin-28A; IFN-lambda-2; Interferon lambda-2; IL28A; IL-28A; Cytokine Zcyto20

Application Instructions

Application table	Application	Dilution
	ELISA	Sandwich: 0.5 - 2.0 µg/ml with ARG66113 as a detection antibody
	IHC-P	1 µg/ml
	WB	0.1 - 0.2 µg/ml
Application Note	IHC-P: Antigen Retrieval: Incubate tissue section in a buffer (proteinase K) at RT for 10 min. * The dilutions indicate recommended starting dilutions and the optimal dilutions or concentrations should be determined by the scientist.	

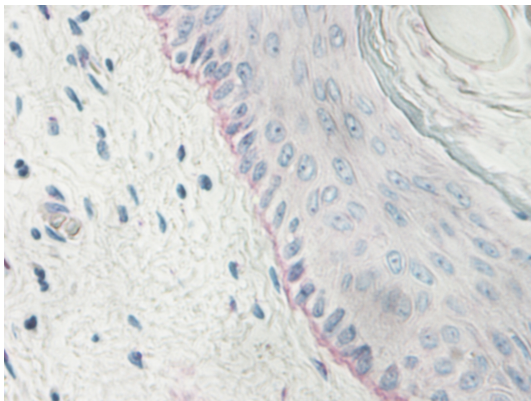
Properties

Form	Liquid
Purification	Affinity purification with immunogen.
Buffer	PBS (pH 7.2)
Concentration	1 mg/ml
Storage instruction	For continuous use, store undiluted antibody at 2-8°C for up to a week. For long-term storage, aliquot and store at -20°C or below. Storage in frost free freezers is not recommended. Avoid repeated freeze/thaw cycles. Suggest spin the vial prior to opening. The antibody solution should be gently mixed before use.
Note	For laboratory research only, not for drug, diagnostic or other use.

Bioinformation

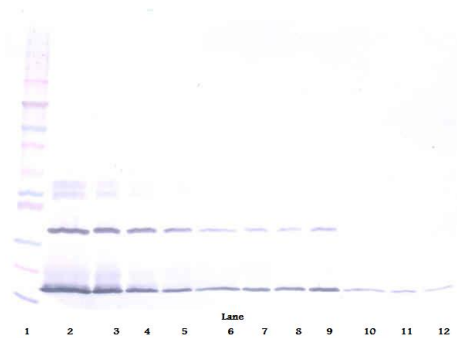
Database links	GeneID: 282616 Human Swiss-port # Q8IZJ0 Human
Gene Symbol	IFNL2
Gene Full Name	interferon, lambda 2
Background	This gene encodes a cytokine distantly related to type I interferons and the IL-10 family. This gene, interleukin 28B (IL28B), and interleukin 29 (IL29) are three closely related cytokine genes that form a cytokine gene cluster on a chromosomal region mapped to 19q13. Expression of the cytokines encoded by the three genes can be induced by viral infection. All three cytokines have been shown to interact with a heterodimeric class II cytokine receptor that consists of interleukin 10 receptor, beta (IL10RB) and interleukin 28 receptor, alpha (IL28RA). [provided by RefSeq, Jul 2008]
Function	Cytokine with antiviral, antitumour and immunomodulatory activities. Plays a critical role in the antiviral host defense, predominantly in the epithelial tissues. Acts as a ligand for the heterodimeric class II cytokine receptor composed of IL10RB and IFNLR1, and receptor engagement leads to the activation of the JAK/STAT signaling pathway resulting in the expression of IFN-stimulated genes (ISG), which mediate the antiviral state. Has a restricted receptor distribution and therefore restricted targets: is primarily active in epithelial cells and this cell type-selective action is because of the epithelial cell-specific expression of its receptor IFNLR1. Seems not to be essential for early virus-activated host defense in vaginal infection, but plays an important role in Toll-like receptor (TLR)-induced antiviral defense. Plays a significant role in the antiviral immune defense in the intestinal epithelium. Exerts an immunomodulatory effect by up-regulating MHC class I antigen expression. [UniProt]
Calculated Mw	22 kDa

Images



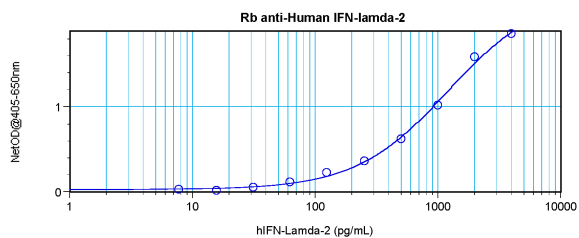
ARG66112 anti-IFN lambda 2 antibody IHC-P image

Immunohistochemistry: Formalin-fixed and paraffin-embedded sections of normal Human skin. The recommended ARG66112 anti-IFN lambda 2 antibody concentration is 1.0 µg/ml overnight at 4°C. An alkaline phosphatase-labeled polymer detection system was used with a non-alcohol soluble red chromogen. Antigen Retrieval: Incubate tissue section in a buffer (proteinase K) at RT for 10 min.



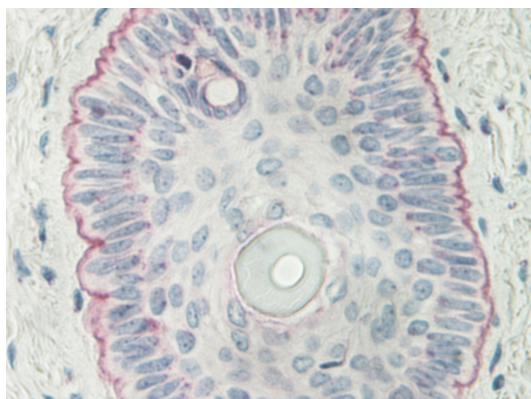
ARG66112 anti-IFN lambda 2 antibody WB image

Western blot: 250 - 0.24 ng of Human IFN-λ2 stained with ARG66112 anti-IFN lambda 2 antibody, under non-reducing conditions.



ARG66112 anti-IFN lambda 2 antibody standard curve image

Sandwich ELISA: ARG66112 anti-IFN lambda 2 antibody as a capture antibody at 0.5 - 2.0 µg/ml combined with ARG66113 anti-IFN lambda 2 antibody (Biotin) as a detection antibody. Results of a typical standard run with optical density reading at 405 - 650 nm.



ARG66112 anti-IFN lambda 2 antibody IHC-P image

Immunohistochemistry: Formalin-fixed and paraffin-embedded sections of normal Human skin. The recommended ARG66112 anti-IFN lambda 2 antibody concentration is 1.0 µg/ml overnight at 4°C. An alkaline phosphatase-labeled polymer detection system was used with a non-alcohol soluble red chromogen. Antigen Retrieval: Incubate tissue section in a buffer (proteinase K) at RT for 10 min.