

## ARG66114 anti-CTGF antibody

Package: 50 µg  
Store at: -20°C

### Summary

Product Description	Rabbit Polyclonal antibody recognizes CTGF
Tested Reactivity	Hu, Rat
Tested Application	ELISA, IHC-P, Neut, WB
Host	Rabbit
Clonality	Polyclonal
Isotype	IgG
Target Name	CTGF
Species	Human
Immunogen	E. coli derived recombinant Human CTGF. (GKKCIRTPKI SKPIKFELSG CTSMKTYRAK FCGVCTDGRC CTPHRTTLP VEFKCPDGEV MKKNMMFIKT CACHYNCPGD NDIFESLYR KMYGDMA)
Conjugation	Un-conjugated
Alternate Names	Insulin-like growth factor-binding protein 8; IGFBP-8; CCN2; IBP-8; HCS24; Connective tissue growth factor; IGF-binding protein 8; CCN family member 2; IGFBP8; Hypertrophic chondrocyte-specific protein 24; NOV2

### Application Instructions

Application table	Application	Dilution
	ELISA	Sandwich: 0.5 - 2.0 µg/ml with ARG66115 as a detection antibody
	IHC-P	0.125 - 0.250 µg/ml
	Neut	6.0 - 9.0 µg/ml (To yield [ND50] of the biological activity of hCTGF (5.0 µg/ml) )
	WB	0.1 - 0.2 µg/ml
Application Note	IHC-P: Antigen Retrieval: Boil tissue section in Sodium Citrate buffer (pH 6.0) followed by cooling at RT for 20 min. * The dilutions indicate recommended starting dilutions and the optimal dilutions or concentrations should be determined by the scientist.	

### Properties

Form	Liquid
Purification	Affinity purification with immunogen.
Buffer	PBS (pH 7.2)
Concentration	1 mg/ml
Storage instruction	For continuous use, store undiluted antibody at 2-8°C for up to a week. For long-term storage, aliquot

and store at -20°C or below. Storage in frost free freezers is not recommended. Avoid repeated freeze/thaw cycles. Suggest spin the vial prior to opening. The antibody solution should be gently mixed before use.

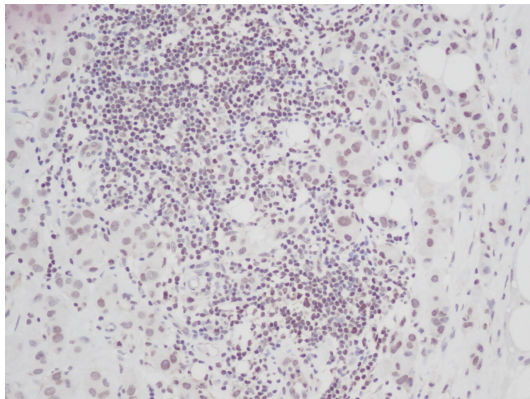
#### Note

For laboratory research only, not for drug, diagnostic or other use.

## Bioinformation

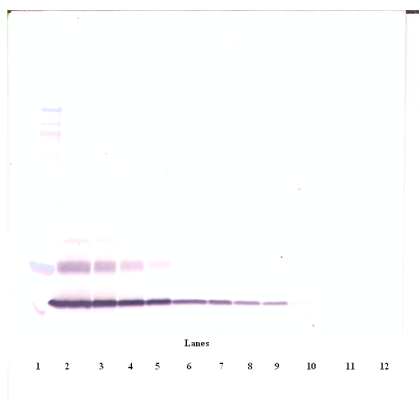
Database links	<a href="#">GeneID: 1490 Human</a> <a href="#">GeneID: 64032 Rat</a> <a href="#">Swiss-port # P29279 Human</a> <a href="#">Swiss-port # Q9R1E9 Rat</a>
Gene Symbol	CTGF
Gene Full Name	connective tissue growth factor
Background	The protein encoded by this gene is a mitogen that is secreted by vascular endothelial cells. The encoded protein plays a role in chondrocyte proliferation and differentiation, cell adhesion in many cell types, and is related to platelet-derived growth factor. Certain polymorphisms in this gene have been linked with a higher incidence of systemic sclerosis. [provided by RefSeq, Nov 2009]
Function	Major connective tissue mitogen secreted by vascular endothelial cells. Promotes proliferation and differentiation of chondrocytes. Mediates heparin- and divalent cation-dependent cell adhesion in many cell types including fibroblasts, myofibroblasts, endothelial and epithelial cells. Enhances fibroblast growth factor-induced DNA synthesis. [UniProt]
Calculated Mw	38 kDa

## Images



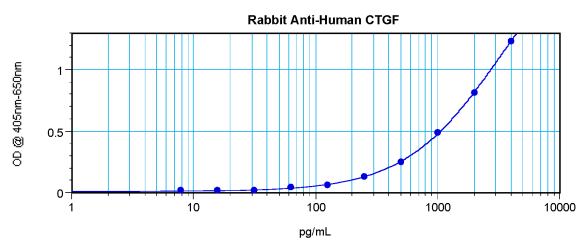
ARG66114 anti-CTGF antibody IHC-P image

Immunohistochemistry: Formalin-fixed and paraffin-embedded sections of Human breast invasive malignant carcinoma. The recommended ARG66114 anti-CTGF antibody concentration is 0.125 µg/ml - 0.250 µg/ml with an overnight incubation at 4°C. An HRP-labeled polymer detection system was used with a DAB chromogen. Antigen Retrieval: Boil tissue section in Sodium Citrate buffer (pH 6.0) followed by cooling at RT for 20 min.



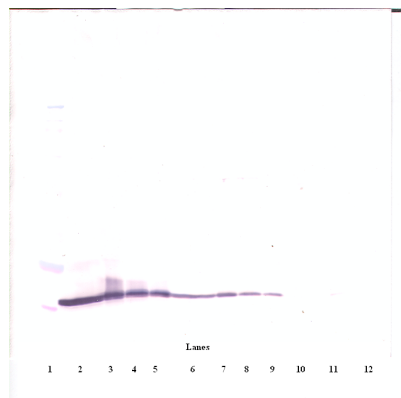
ARG66114 anti-CTGF antibody WB image

Western blot: 250 - 0.24 ng of Human CTGF stained with ARG66114 anti-CTGF antibody, under non-reducing conditions.



ARG66114 anti-CTGF antibody standard curve image

Sandwich ELISA: ARG66114 anti-CTGF antibody as a capture antibody at 0.5 - 2.0  $\mu\text{g}/\text{ml}$  combined with ARG66115 anti-CTGF antibody (Biotin) as a detection antibody. Results of a typical standard run with optical density reading at 405 - 650 nm.



ARG66114 anti-CTGF antibody WB image

Western blot: 250 - 0.24 ng of Human CTGF stained with ARG66114 anti-CTGF antibody, under reducing conditions.