

ARG66115 anti-CTGF antibody (Biotin)

Package: 50 µg
Store at: 4°C

Summary

Product Description	Biotin-conjugated Rabbit Polyclonal antibody recognizes CTGF
Tested Reactivity	Hu
Tested Application	ELISA, WB
Host	Rabbit
Clonality	Polyclonal
Isotype	IgG
Target Name	CTGF
Species	Human
Immunogen	E. coli derived recombinant Human CTGF. (GKKCIRTPKI SKPIKFELSG CTSMKTYRAK FCGVCTDGRC CTPHRTTTL PVEFKCPDGEV MKKNMMFIKT CACHYNCPGD NDIFESLYR KMYGDMA)
Conjugation	Biotin
Alternate Names	Insulin-like growth factor-binding protein 8; IGFBP-8; CCN2; IBP-8; HCS24; Connective tissue growth factor; IGF-binding protein 8; CCN family member 2; IGFBP8; Hypertrophic chondrocyte-specific protein 24; NOV2

Application Instructions

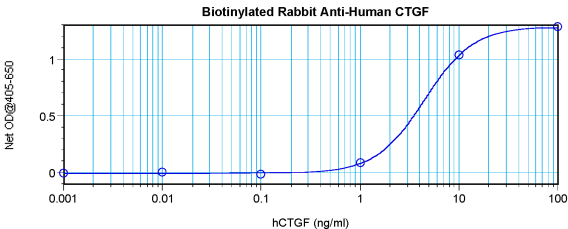
Application table	Application	Dilution
	ELISA	Direct: 0.25 - 1.0 µg/ml Sandwich: 0.25 - 1.0 µg/ml with ARG66114 as a capture antibody
	WB	0.1 - 0.2 µg/ml
Application Note	* The dilutions indicate recommended starting dilutions and the optimal dilutions or concentrations should be determined by the scientist.	

Properties

Form	Liquid
Purification	Purified by affinity chromatography.
Buffer	PBS (pH 7.2)
Concentration	1 mg/ml
Storage instruction	Aliquot and store in the dark at 2-8°C. Keep protected from prolonged exposure to light. Avoid repeated freeze/thaw cycles. Suggest spin the vial prior to opening. The antibody solution should be gently mixed before use.
Note	For laboratory research only, not for drug, diagnostic or other use.

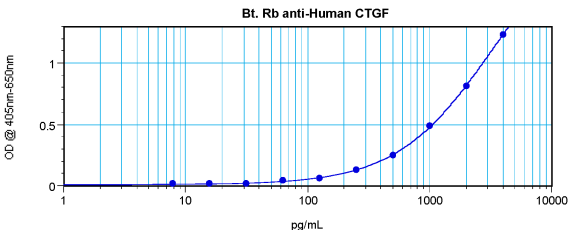
Database links	GeneID: 1490 Human Swiss-port # P29279 Human
Gene Symbol	CTGF
Gene Full Name	connective tissue growth factor
Background	The protein encoded by this gene is a mitogen that is secreted by vascular endothelial cells. The encoded protein plays a role in chondrocyte proliferation and differentiation, cell adhesion in many cell types, and is related to platelet-derived growth factor. Certain polymorphisms in this gene have been linked with a higher incidence of systemic sclerosis. [provided by RefSeq, Nov 2009]
Function	Major connective tissue mitogen secreted by vascular endothelial cells. Promotes proliferation and differentiation of chondrocytes. Mediates heparin- and divalent cation-dependent cell adhesion in many cell types including fibroblasts, myofibroblasts, endothelial and epithelial cells. Enhances fibroblast growth factor-induced DNA synthesis. [UniProt]
Calculated Mw	38 kDa

Images



ARG66115 anti-CTGF antibody (Biotin) standard curve image

Direct ELISA: ARG66115 anti-CTGF antibody (Biotin) at 0.25 - 1.0 µg/ml results of a typical standard run with optical density reading at 405 - 650 nm.



ARG66115 anti-CTGF antibody (Biotin) standard curve image

Sandwich ELISA: ARG66115 anti-CTGF antibody (Biotin) as a detection antibody at 0.25 - 1.0 µg/ml combined with ARG66114 anti-CTGF antibody as a capture antibody. Results of a typical standard run with optical density reading at 405 - 650 nm.