

ARG66117 anti-BTC / Betacellulin antibody (Biotin)

Package: 50 µg
Store at: 4°C

Summary

Product Description	Biotin-conjugated Rabbit Polyclonal antibody recognizes BTC / Betacellulin
Tested Reactivity	Hu
Tested Application	ELISA, WB
Host	Rabbit
Clonality	Polyclonal
Isotype	IgG
Target Name	BTC / Betacellulin
Species	Human
Immunogen	E. coli derived recombinant Human Betacellulin. (DGNSTRSPET NGLLCGDPEE NCAATTTQSK RKGHFSRCPK QYKHCIKGR CRFVVAEQTP SCVCDEGYIG ARCERVDLFY)
Conjugation	Biotin
Alternate Names	Probetacellulin; BTC

Application Instructions

Application table	Application	Dilution
	ELISA	Direct: 0.25 - 1.0 µg/ml Sandwich: 0.25 - 1.0 µg/ml with ARG66116 as a capture antibody
	WB	0.1 - 0.2 µg/ml
Application Note	* The dilutions indicate recommended starting dilutions and the optimal dilutions or concentrations should be determined by the scientist.	

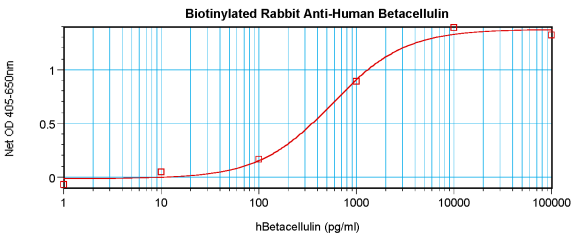
Properties

Form	Liquid
Purification	Purified by affinity chromatography.
Buffer	PBS (pH 7.2)
Concentration	1 mg/ml
Storage instruction	Aliquot and store in the dark at 2-8°C. Keep protected from prolonged exposure to light. Avoid repeated freeze/thaw cycles. Suggest spin the vial prior to opening. The antibody solution should be gently mixed before use.
Note	For laboratory research only, not for drug, diagnostic or other use.

Bioinformation

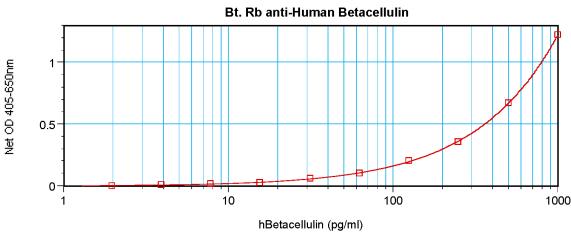
Database links	GeneID: 685 Human Swiss-port # P35070 Human
Gene Symbol	BTC
Gene Full Name	betacellulin
Background	The protein encoded by this gene is a member of the EGF family of growth factors. It is synthesized primarily as a transmembrane precursor, which is then processed to mature molecule by proteolytic events. This protein is a ligand for the EGF receptor. [provided by RefSeq, Jul 2008]
Function	Growth factor that binds to EGFR, ERBB4 and other EGF receptor family members. Potent mitogen for retinal pigment epithelial cells and vascular smooth muscle cells. [UniProt]
Calculated Mw	20 kDa

Images



ARG66117 anti-BTC / Betacellulin antibody (Biotin) standard curve image

Direct ELISA: ARG66117 anti-BTC / Betacellulin antibody (Biotin) at 0.25 - 1.0 µg/ml results of a typical standard run with optical density reading at 405 - 650 nm.



ARG66117 anti-BTC / Betacellulin antibody (Biotin) standard curve image

Sandwich ELISA: ARG66117 anti-BTC / Betacellulin antibody (Biotin) as a detection antibody at 0.25 - 1.0 µg/ml combined with ARG66116 anti-Betacellulin antibody as a capture antibody. Results of a typical standard run with optical density reading at 405 - 650 nm.