

ARG66128 anti-Maspin antibody

Package: 50 µg
Store at: -20°C

Summary

Product Description	Rabbit Polyclonal antibody recognizes Maspin
Tested Reactivity	Hu
Tested Application	ELISA, IHC-P, WB
Host	Rabbit
Clonality	Polyclonal
Isotype	IgG
Target Name	Maspin
Species	Human
Immunogen	E. coli derived recombinant Human Maspin. (MDALQLANSA FAVDLFKQLC EKEPLGNVLF SPICLSTSLA LAQVGAKGDT ANEIGQVLHF ENVKDIPFGF QTVTSDVNKL SSFYSLKLIK RLYVDKSLNL STEFISSTKR PYAKELETVD FKDKLEETKG QINNSIKDLT DGHFENILAD NSVNDQTKIL VVNAAYFVGK WMKKFPESET KECFRLNKT DTKPVQMMNM EATFCMGNID SINCKIIELP FQNKHLMSFI LLPKDVEDES TGLEKIEQL NSESLSQWTN PSTMANAKVK LSIPKFVEK MIDPKACLEN LGLKHIFSED TSDFSGMSET KGVALSNVIH KVCLEITEDG GDSIEVPGAR ILQHKDELNA DHPFIYIIRH NKTRNIIFFG KFCSP)
Conjugation	Un-conjugated
Alternate Names	PI-5; PI5; Maspin; Serpin B5; maspin; Peptidase inhibitor 5

Application Instructions

Application table	Application	Dilution
	ELISA	Sandwich: 0.5 - 2.0 µg/ml with ARG66129 as a detection antibody
	IHC-P	7.8 ng/ml - 15.625 ng/ml
	WB	0.1 - 0.2 µg/ml
Application Note	* The dilutions indicate recommended starting dilutions and the optimal dilutions or concentrations should be determined by the scientist.	

Properties

Form	Liquid
Purification	Affinity purification with immunogen.
Buffer	PBS (pH 7.2)
Concentration	1 mg/ml
Storage instruction	For continuous use, store undiluted antibody at 2-8°C for up to a week. For long-term storage, aliquot and store at -20°C or below. Storage in frost free freezers is not recommended. Avoid repeated freeze/thaw cycles. Suggest spin the vial prior to opening. The antibody solution should be gently mixed before use.

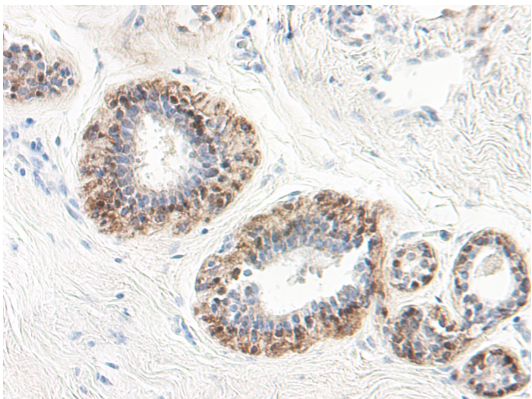
Note

For laboratory research only, not for drug, diagnostic or other use.

Bioinformation

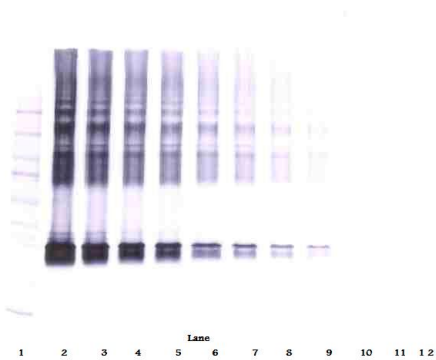
Database links	GeneID: 5268 Human Swiss-port # P36952 Human
Gene Symbol	SERPINB5
Gene Full Name	serpin peptidase inhibitor, clade B (ovalbumin), member 5
Function	Tumor suppressor. It blocks the growth, invasion, and metastatic properties of mammary tumors. As it does not undergo the S (stressed) to R (relaxed) conformational transition characteristic of active serpins, it exhibits no serine protease inhibitory activity. [UniProt]
Calculated Mw	42 kDa

Images



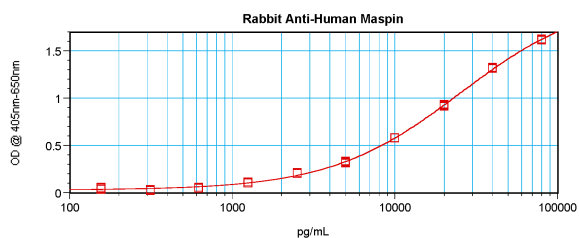
ARG66128 anti-Maspin antibody IHC-P image

Immunohistochemistry: Formalin-fixed and paraffin-embedded sections of Human normal breast and Human breast lobular carcinoma in situ. The recommended ARG66128 anti-Maspin antibody concentration is 7.8 ng/ml - 15.625 ng/ml with an overnight incubation at 4°C. An HRP-labeled polymer detection system was used with a DAB chromogen.



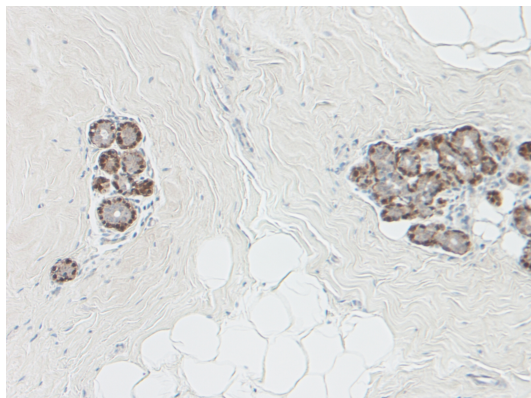
ARG66128 anti-Maspin antibody WB image

Western blot: 250 - 0.24 ng of Human Maspin stained with ARG66128 anti-Maspin antibody, under non-reducing conditions.



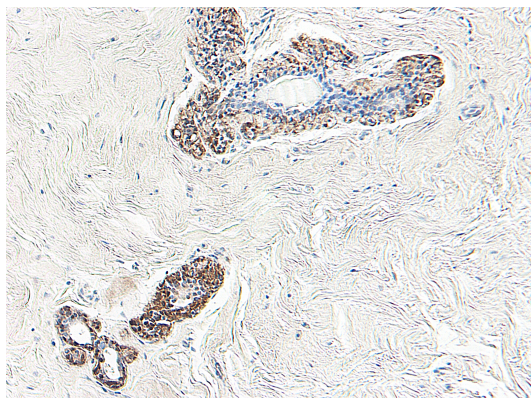
ARG66128 anti-Maspin antibody standard curve image

Sandwich ELISA: ARG66128 anti-Maspin antibody as a capture antibody at 0.5 - 2.0 µg/ml combined with ARG66129 anti-Maspin antibody (Biotin) as a detection antibody. Results of a typical standard run with optical density reading at 405 - 650 nm.



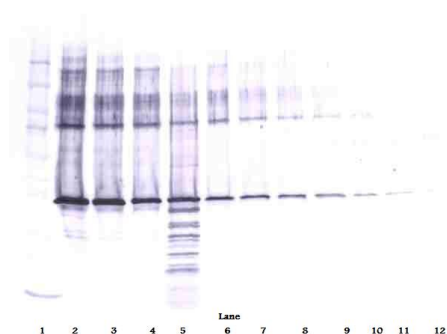
ARG66128 anti-Maspin antibody IHC-P image

Immunohistochemistry: Formalin-fixed and paraffin-embedded sections of Human normal breast and Human breast lobular carcinoma in situ. The recommended ARG66128 anti-Maspin antibody concentration is 7.8 ng/ml - 15.625 ng/ml with an overnight incubation at 4°C. An HRP-labeled polymer detection system was used with a DAB chromogen.



ARG66128 anti-Maspin antibody IHC-P image

Immunohistochemistry: Formalin-fixed and paraffin-embedded sections of Human normal breast and Human breast lobular carcinoma in situ. The recommended ARG66128 anti-Maspin antibody concentration is 7.8 ng/ml - 15.625 ng/ml with an overnight incubation at 4°C. An HRP-labeled polymer detection system was used with a DAB chromogen.



ARG66128 anti-Maspin antibody WB image

Western blot: 250 - 0.24 ng of Human Maspin stained with ARG66128 anti-Maspin antibody, under reducing conditions.