

ARG66174 anti-EFHD1 antibody

Package: 100 µg
Store at: -20°C

Summary

Product Description	Mouse Monoclonal antibody recognizes EFHD1
Tested Reactivity	Hu, Ms, Rat
Tested Application	ICC/IF, IHC-P
Specificity	The antibody detects endogenous EFHD1 proteins.
Host	Mouse
Clonality	Monoclonal
Target Name	EFHD1
Species	Human
Immunogen	Synthetic peptide of Human EFHD1.
Conjugation	Un-conjugated
Alternate Names	EF-hand domain-containing protein D1; Swiprosin-2; EF-hand domain-containing protein 1; MSTP133; MST133; SWS2; PP3051

Application Instructions

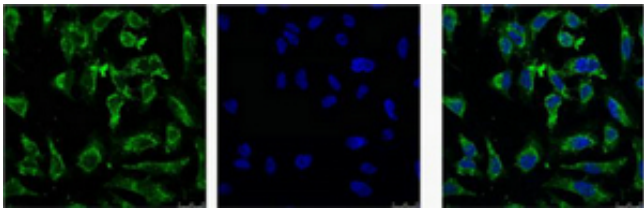
Application table	Application	Dilution
	ICC/IF	1:100 - 1:200
	IHC-P	1:50 - 1:300
Application Note	IHC-P: Antigen Retrieval: Boil tissue section in Sodium citrate buffer (pH 6.0) for 20 min. * The dilutions indicate recommended starting dilutions and the optimal dilutions or concentrations should be determined by the scientist.	

Properties

Form	Liquid
Purification	Affinity purification with immunogen.
Buffer	PBS (pH 7.4), 0.02% Sodium azide and 50% Glycerol.
Preservative	0.02% Sodium azide
Stabilizer	50% Glycerol
Concentration	1 mg/ml
Storage instruction	For continuous use, store undiluted antibody at 2-8°C for up to a week. For long-term storage, aliquot and store at -20°C. Storage in frost free freezers is not recommended. Avoid repeated freeze/thaw cycles. Suggest spin the vial prior to opening. The antibody solution should be gently mixed before use.
Note	For laboratory research only, not for drug, diagnostic or other use.

Gene Symbol	EFHD1
Gene Full Name	EF-hand domain family, member D1
Background	EFHD1 is an EF-hand domain-containing protein that displays increased expression during neuronal differentiation (Tominaga and Tomooka, 2002 [PubMed 12270117]).[supplied by OMIM, Mar 2008]
Calculated Mw	27 kDa

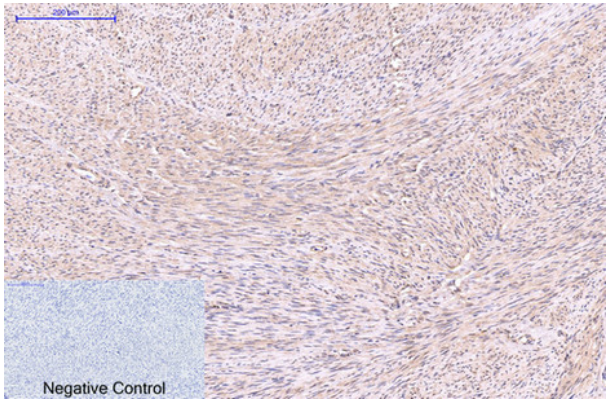
Images



ARG66174 anti-EFHD1 antibody ICC/IF image

Immunofluorescence: HeLa cells stained with ARG66174 anti-EFHD1 antibody (green).

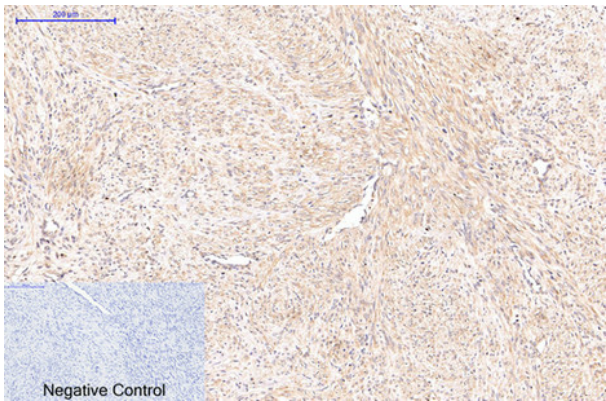
Left: Target. Middle: DAPI. Right: merge image.



ARG66174 anti-EFHD1 antibody IHC-P image

Immunohistochemistry: Paraffin-embedded Human uterus tissue stained with ARG66174 anti-EFHD1 antibody at 1:200 dilution (4°C, overnight). Antigen Retrieval: Boil tissue section in Sodium citrate buffer (pH 6.0) for 20 min.

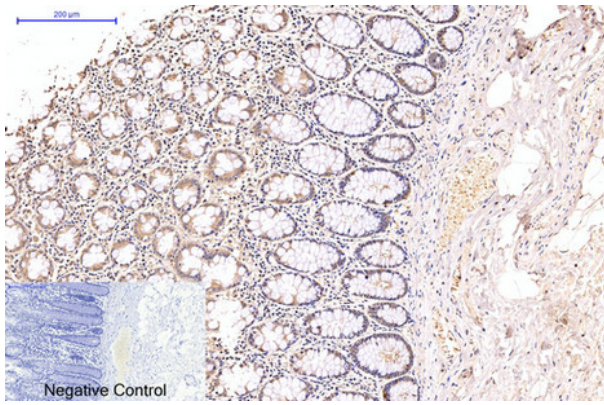
Negative control was used by secondary antibody only.



ARG66174 anti-EFHD1 antibody IHC-P image

Immunohistochemistry: Paraffin-embedded Human uterus cancer tissue stained with ARG66174 anti-EFHD1 antibody at 1:200 dilution (4°C, overnight). Antigen Retrieval: Boil tissue section in Sodium citrate buffer (pH 6.0) for 20 min.

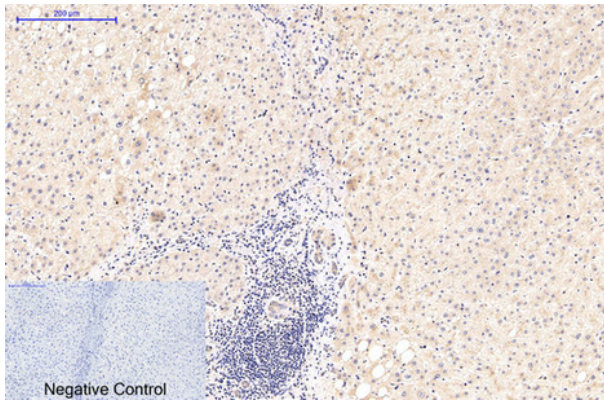
Negative control was used by secondary antibody only.



ARG66174 anti-EFHD1 antibody IHC-P image

Immunohistochemistry: Paraffin-embedded Human colon tissue stained with ARG66174 anti-EFHD1 antibody at 1:200 dilution (4°C, overnight). Antigen Retrieval: Boil tissue section in Sodium citrate buffer (pH 6.0) for 20 min.

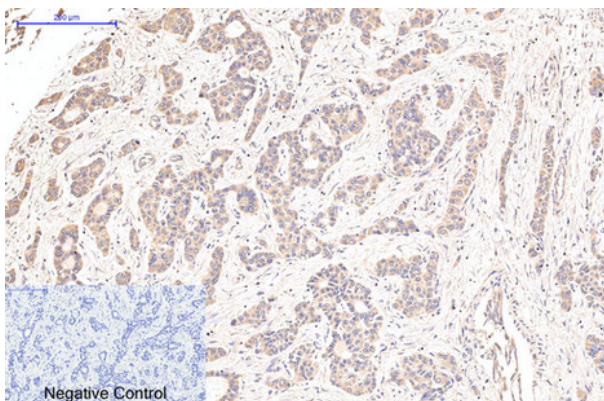
Negative control was used by secondary antibody only.



ARG66174 anti-EFHD1 antibody IHC-P image

Immunohistochemistry: Paraffin-embedded Human liver tissue stained with ARG66174 anti-EFHD1 antibody at 1:200 dilution (4°C, overnight). Antigen Retrieval: Boil tissue section in Sodium citrate buffer (pH 6.0) for 20 min.

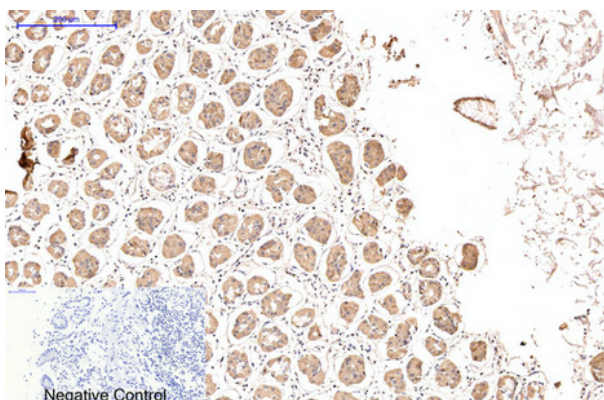
Negative control was used by secondary antibody only.



ARG66174 anti-EFHD1 antibody IHC-P image

Immunohistochemistry: Paraffin-embedded Human liver cancer tissue stained with ARG66174 anti-EFHD1 antibody at 1:200 dilution (4°C, overnight). Antigen Retrieval: Boil tissue section in Sodium citrate buffer (pH 6.0) for 20 min.

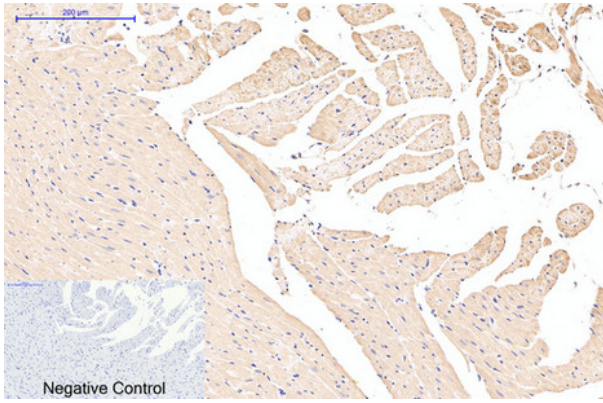
Negative control was used by secondary antibody only.



ARG66174 anti-EFHD1 antibody IHC-P image

Immunohistochemistry: Paraffin-embedded Human stomach tissue stained with ARG66174 anti-EFHD1 antibody at 1:200 dilution (4°C, overnight). Antigen Retrieval: Boil tissue section in Sodium citrate buffer (pH 6.0) for 20 min.

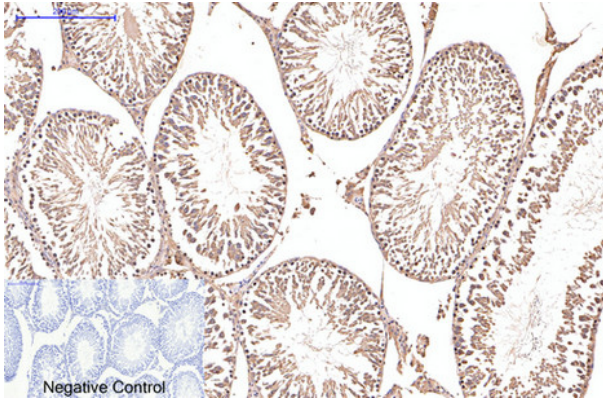
Negative control was used by secondary antibody only.



ARG66174 anti-EFHD1 antibody IHC-P image

Immunohistochemistry: Paraffin-embedded Rat heart tissue stained with ARG66174 anti-EFHD1 antibody at 1:200 dilution (4°C, overnight). Antigen Retrieval: Boil tissue section in Sodium citrate buffer (pH 6.0) for 20 min.

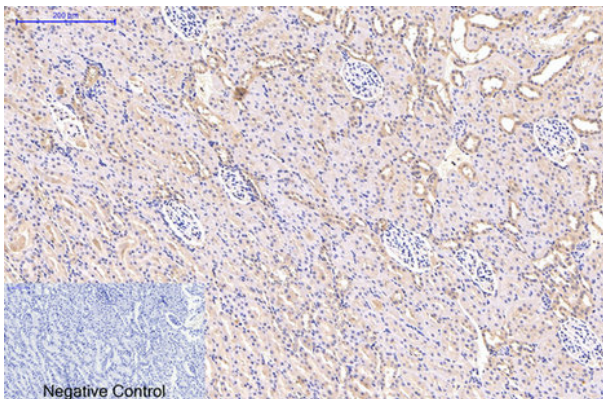
Negative control was used by secondary antibody only.



ARG66174 anti-EFHD1 antibody IHC-P image

Immunohistochemistry: Paraffin-embedded Rat testis tissue stained with ARG66174 anti-EFHD1 antibody at 1:200 dilution (4°C, overnight). Antigen Retrieval: Boil tissue section in Sodium citrate buffer (pH 6.0) for 20 min.

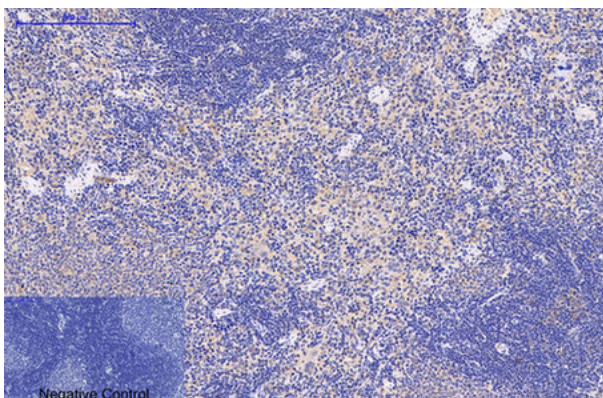
Negative control was used by secondary antibody only.



ARG66174 anti-EFHD1 antibody IHC-P image

Immunohistochemistry: Paraffin-embedded Rat kidney tissue stained with ARG66174 anti-EFHD1 antibody at 1:200 dilution (4°C, overnight). Antigen Retrieval: Boil tissue section in Sodium citrate buffer (pH 6.0) for 20 min.

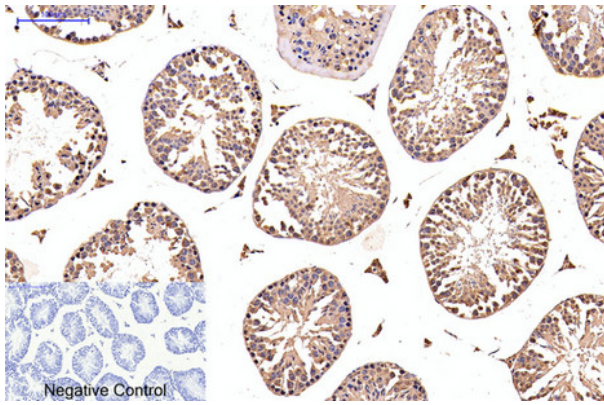
Negative control was used by secondary antibody only.



ARG66174 anti-EFHD1 antibody IHC-P image

Immunohistochemistry: Paraffin-embedded Rat spleen tissue stained with ARG66174 anti-EFHD1 antibody at 1:200 dilution (4°C, overnight). Antigen Retrieval: Boil tissue section in Sodium citrate buffer (pH 6.0) for 20 min.

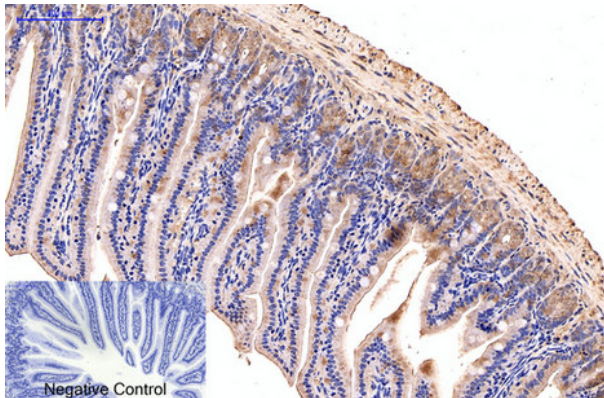
Negative control was used by secondary antibody only.



ARG66174 anti-EFHD1 antibody IHC-P image

Immunohistochemistry: Paraffin-embedded Mouse testis tissue stained with ARG66174 anti-EFHD1 antibody at 1:200 dilution (4°C, overnight). Antigen Retrieval: Boil tissue section in Sodium citrate buffer (pH 6.0) for 20 min.

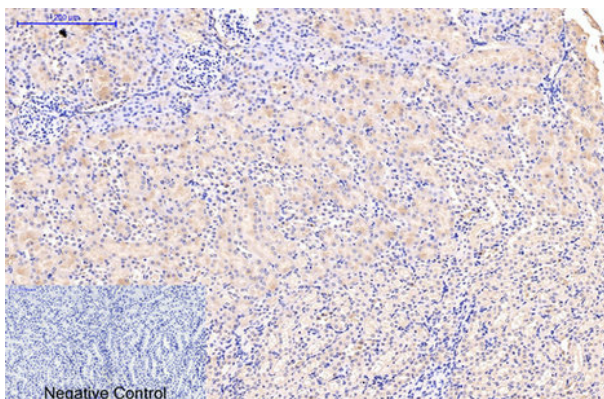
Negative control was used by secondary antibody only.



ARG66174 anti-EFHD1 antibody IHC-P image

Immunohistochemistry: Paraffin-embedded Mouse colon tissue stained with ARG66174 anti-EFHD1 antibody at 1:200 dilution (4°C, overnight). Antigen Retrieval: Boil tissue section in Sodium citrate buffer (pH 6.0) for 20 min.

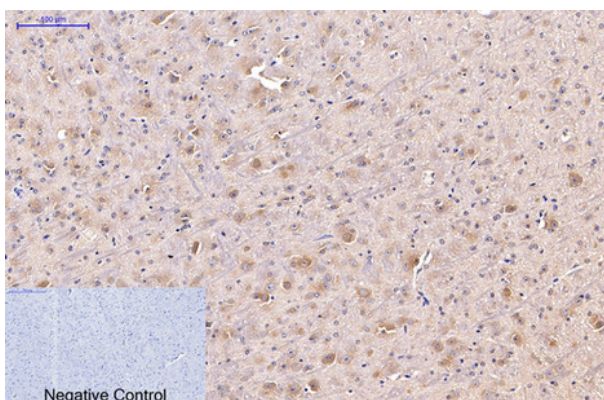
Negative control was used by secondary antibody only.



ARG66174 anti-EFHD1 antibody IHC-P image

Immunohistochemistry: Paraffin-embedded Mouse kidney tissue stained with ARG66174 anti-EFHD1 antibody at 1:200 dilution (4°C, overnight). Antigen Retrieval: Boil tissue section in Sodium citrate buffer (pH 6.0) for 20 min.

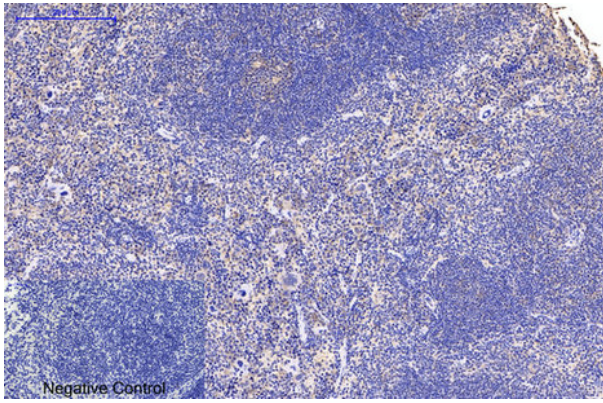
Negative control was used by secondary antibody only.



ARG66174 anti-EFHD1 antibody IHC-P image

Immunohistochemistry: Paraffin-embedded Mouse brain tissue stained with ARG66174 anti-EFHD1 antibody at 1:200 dilution (4°C, overnight). Antigen Retrieval: Boil tissue section in Sodium citrate buffer (pH 6.0) for 20 min.

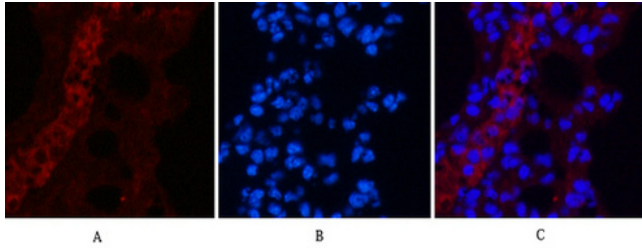
Negative control was used by secondary antibody only.



ARG66174 anti-EFHD1 antibody IHC-P image

Immunohistochemistry: Paraffin-embedded Mouse spleen tissue stained with ARG66174 anti-EFHD1 antibody at 1:200 dilution (4°C, overnight). Antigen Retrieval: Boil tissue section in Sodium citrate buffer (pH 6.0) for 20 min.

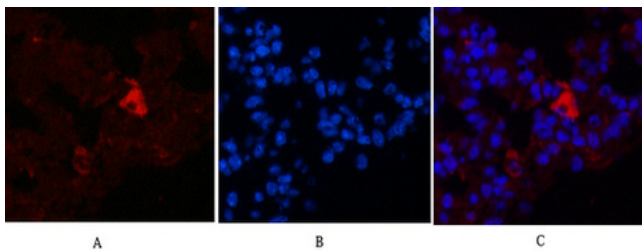
Negative control was used by secondary antibody only.



ARG66174 anti-EFHD1 antibody IHC image

Immunohistochemistry: Mouse lung tissue stained with ARG66174 anti-EFHD1 antibody (red) at 1:200 dilution (4°C, overnight).

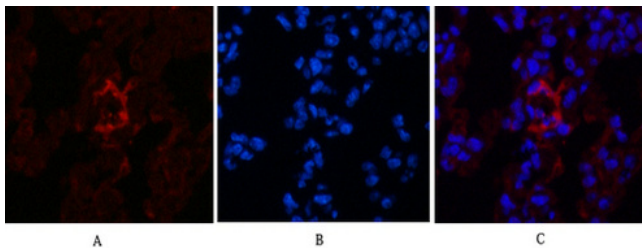
Picture A: Target. Picture B: DAPI. Picture C: merge of A+B.



ARG66174 anti-EFHD1 antibody IHC image

Immunohistochemistry: Mouse lung tissue stained with ARG66174 anti-EFHD1 antibody (red) at 1:200 dilution (4°C, overnight).

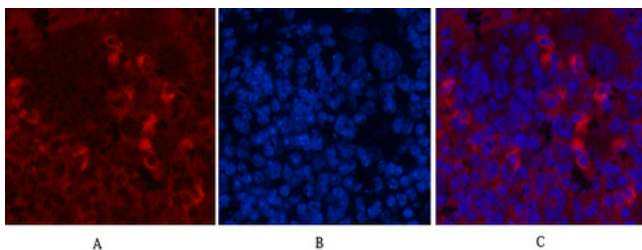
Picture A: Target. Picture B: DAPI. Picture C: merge of A+B.



ARG66174 anti-EFHD1 antibody IHC image

Immunohistochemistry: Mouse lung tissue stained with ARG66174 anti-EFHD1 antibody (red) at 1:200 dilution (4°C, overnight).

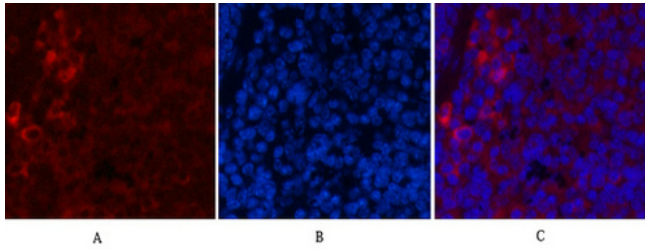
Picture A: Target. Picture B: DAPI. Picture C: merge of A+B.



ARG66174 anti-EFHD1 antibody IHC image

Immunohistochemistry: Mouse spleen tissue stained with ARG66174 anti-EFHD1 antibody (red) at 1:200 dilution (4°C, overnight).

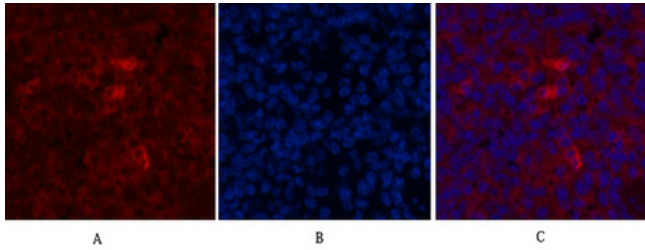
Picture A: Target. Picture B: DAPI. Picture C: merge of A+B.



ARG66174 anti-EFHD1 antibody IHC image

Immunohistochemistry: Mouse spleen tissue stained with ARG66174 anti-EFHD1 antibody (red) at 1:200 dilution (4°C, overnight).

Picture A: Target. Picture B: DAPI. Picture C: merge of A+B.



ARG66174 anti-EFHD1 antibody IHC image

Immunohistochemistry: Mouse spleen tissue stained with ARG66174 anti-EFHD1 antibody (red) at 1:200 dilution (4°C, overnight).

Picture A: Target. Picture B: DAPI. Picture C: merge of A+B.