

ARG66258 anti-SLC47A2 / MATE2 antibody

Package: 50 µg
Store at: -20°C

Summary

Product Description	Goat Polyclonal antibody recognizes SLC47A2 / MATE2
Tested Reactivity	Hu
Tested Application	WB
Host	Goat
Clonality	Polyclonal
Isotype	IgG
Target Name	SLC47A2 / MATE2
Species	Human
Immunogen	Synthetic peptide around the internal region of Human SLC47A2 / MATE2. (C-QRAESTATRPGEK)
Conjugation	Un-conjugated
Alternate Names	Kidney-specific H; Multidrug and toxin extrusion protein 2; MATE2K; MATE-2; MATE2; MATE2-K; hMATE-2; Solute carrier family 47 member 2; MATE2-B

Application Instructions

Application table	Application	Dilution
	WB	0.1 - 0.3 µg/ml
Application Note	WB: Recommend incubate at RT for 1h. * The dilutions indicate recommended starting dilutions and the optimal dilutions or concentrations should be determined by the scientist.	
Observed Size	~ 60 kDa	

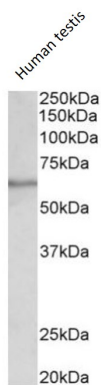
Properties

Form	Liquid
Purification	Affinity purified
Buffer	Tris saline (pH 7.3), 0.02% Sodium azide and 0.5% BSA.
Preservative	0.02% Sodium azide
Stabilizer	0.5% BSA
Concentration	0.5 mg/ml
Storage instruction	For continuous use, store undiluted antibody at 2-8°C for up to a week. For long-term storage, aliquot and store at -20°C or below. Storage in frost free freezers is not recommended. Avoid repeated freeze/thaw cycles. Suggest spin the vial prior to opening. The antibody solution should be gently mixed before use.
Note	For laboratory research only, not for drug, diagnostic or other use.

Bioinformation

Gene Symbol	SLC47A2
Gene Full Name	solute carrier family 47 (multidrug and toxin extrusion), member 2
Background	This gene encodes a protein belonging to a family of transporters involved in excretion of toxic electrolytes, both endogenous and exogenous, through urine and bile. This transporter family shares homology with the bacterial MATE (multidrug and toxin extrusion) protein family responsible for drug resistance. This gene is one of two members of the MATE transporter family located near each other on chromosome 17. Alternatively spliced transcript variants encoding different isoforms have been identified for this gene. [provided by RefSeq, Jul 2008]
Function	Solute transporter for tetraethylammonium (TEA), 1-methyl-4-phenylpyridinium (MPP), cimetidine, N-methylnicotinamide, metformin, creatinine, guanidine, procainamide, topotecan, estrone sulfate, acyclovir, and ganciclovir. Responsible for the secretion of cationic drugs across the brush border membranes. [UniProt]
Calculated Mw	65 kDa

Images



ARG66258 anti-SLC47A2 / MATE2 antibody WB image

Western blot: 35 µg of Human testis lysate stained with ARG66258 anti-SLC47A2 / MATE2 antibody at 0.1 µg/ml (1 hour incubation).