

## ARG66265 anti-K-Ras antibody

Package: 100 µg  
Store at: -20°C

### Summary

Product Description	Rabbit Polyclonal antibody recognizes K-Ras
Tested Reactivity	Hu
Predict Reactivity	Ms, Rat
Tested Application	WB
Specificity	The immunogen sequence was designed to react K-Ras (Isoform 2A) only and it does not react to H-Ras and N-Ras tested by ELISA.
Host	Rabbit
Clonality	Polyclonal
Isotype	IgG
Target Name	K-Ras
Species	Human
Immunogen	Synthetic peptide around the C-terminus of Human K-Ras.
Conjugation	Un-conjugated
Alternate Names	NS3; KRAS1; KRAS2; RALD; K-RAS4A; GTPase KRas; c-Ki-ras; KI-RAS; RASK2; K-RAS2B; K-RAS2A; K-RAS4B; c-K-ras; C-K-RAS; NS; CFC2; Ki-Ras; K-Ras 2

### Application Instructions

Application table	Application	Dilution
	WB	1:500 - 1:2000
Application Note	* The dilutions indicate recommended starting dilutions and the optimal dilutions or concentrations should be determined by the scientist.	
Observed Size	22 kDa	

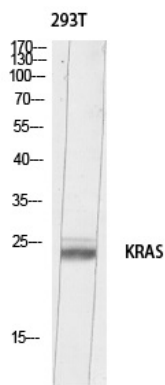
### Properties

Form	Liquid
Purification	Affinity purification with immunogen.
Buffer	PBS, 0.02% Sodium azide, 50% Glycerol and 0.5% BSA.
Preservative	0.02% Sodium azide
Stabilizer	50% Glycerol and 0.5% BSA
Concentration	1 mg/ml
Storage instruction	For continuous use, store undiluted antibody at 2-8°C for up to a week. For long-term storage, aliquot and store at -20°C. Storage in frost free freezers is not recommended. Avoid repeated freeze/thaw cycles. Suggest spin the vial prior to opening. The antibody solution should be gently mixed before use.

Bioinformation

Gene Symbol	KRAS
Gene Full Name	Kirsten rat sarcoma viral oncogene homolog
Background	This gene, a Kirsten ras oncogene homolog from the mammalian ras gene family, encodes a protein that is a member of the small GTPase superfamily. A single amino acid substitution is responsible for an activating mutation. The transforming protein that results is implicated in various malignancies, including lung adenocarcinoma, mucinous adenoma, ductal carcinoma of the pancreas and colorectal carcinoma. Alternative splicing leads to variants encoding two isoforms that differ in the C-terminal region. [provided by RefSeq, Jul 2008]
Function	Ras proteins bind GDP/GTP and possess intrinsic GTPase activity. Plays an important role in the regulation of cell proliferation. [UniProt]
Calculated Mw	22 kDa
PTM	Acetylation at Lys-104 prevents interaction with guanine nucleotide exchange factors (GEFs). [UniProt]

Images



ARG66265 anti-K-Ras antibody WB image

Western blot: 293T cell lysate stained with ARG66265 anti-K-Ras antibody at 1:500 dilution.