

ARG66399 anti-GHRH Receptor antibody

Package: 100 µg
Store at: -20°C

Summary

Product Description	Rabbit Polyclonal antibody recognizes GHRH Receptor
Tested Reactivity	Hu, Ms
Tested Application	WB
Host	Rabbit
Clonality	Polyclonal
Isotype	IgG
Target Name	GHRH Receptor
Species	Human
Immunogen	Synthetic peptide corresponding to aa. 320-400 of Human GHRH Receptor.
Conjugation	Un-conjugated
Alternate Names	GHRH receptor; IGHD1B; GHRFR; Growth hormone-releasing hormone receptor; Growth hormone-releasing factor receptor; GRF receptor; GRFR

Application Instructions

Application table	Application	Dilution
	WB	1:500 - 1:2000
Application Note	* The dilutions indicate recommended starting dilutions and the optimal dilutions or concentrations should be determined by the scientist.	
Observed Size	~ 45 kDa	

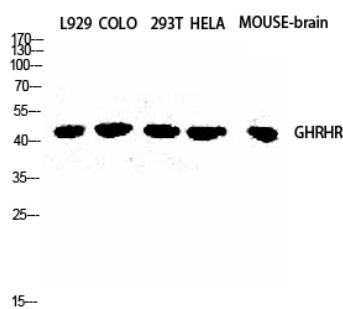
Properties

Form	Liquid
Purification	Affinity purification with immunogen.
Buffer	PBS, 0.02% Sodium azide, 50% Glycerol and 0.5% BSA.
Preservative	0.02% Sodium azide
Stabilizer	50% Glycerol and 0.5% BSA
Concentration	1 mg/ml
Storage instruction	For continuous use, store undiluted antibody at 2-8°C for up to a week. For long-term storage, aliquot and store at -20°C. Storage in frost free freezers is not recommended. Avoid repeated freeze/thaw cycles. Suggest spin the vial prior to opening. The antibody solution should be gently mixed before use.
Note	For laboratory research only, not for drug, diagnostic or other use.

Bioinformation

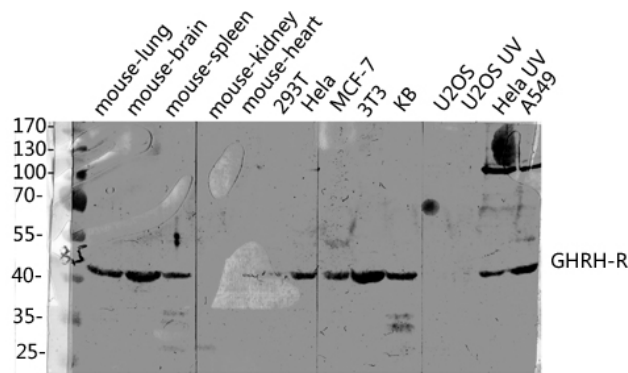
Gene Symbol	GHRHR
Gene Full Name	growth hormone releasing hormone receptor
Background	This gene encodes a receptor for growth hormone-releasing hormone. Binding of this hormone to the receptor leads to synthesis and release of growth hormone. Mutations in this gene have been associated with isolated growth hormone deficiency (IGHD), also known as Dwarfism of Sindh, a disorder characterized by short stature. [provided by RefSeq, Jun 2010]
Function	Receptor for GRF, coupled to G proteins which activate adenylyl cyclase. Stimulates somatotroph cell growth, growth hormone gene transcription and growth hormone secretion. [UniProt]
Calculated Mw	47 kDa
Cellular Localization	Cell membrane; Multi-pass membrane protein. [UniProt]

Images



ARG66399 anti-GHRH Receptor antibody WB image

Western blot: L929, COLO, 293T, HeLa, Mouse brain lysates stained with ARG66399 anti-GHRH Receptor antibody at 1:2000 dilution.



ARG66399 anti-GHRH Receptor antibody WB image

Western blot: Mouse lung, brain, spleen, kidney, heart, 293T, HeLa, MCF-7, 3T3, KB, U2OS, U2OS UV, HeLa UV and A549 lysates stained with ARG66399 anti-GHRH Receptor antibody at 1:2000 dilution.