

## ARG66442 anti-MRGPRX1 / MRGX1 antibody

Package: 100 µg  
Store at: -20°C

### Summary

Product Description	Rabbit Polyclonal antibody recognizes MRGPRX1 / MRGX1
Tested Reactivity	Hu
Tested Application	ICC/IF, WB
Host	Rabbit
Clonality	Polyclonal
Isotype	IgG
Target Name	MRGPRX1 / MRGX1
Species	Human
Immunogen	Synthetic peptide within aa. 240-320 of Human MRGX1.
Conjugation	Un-conjugated
Alternate Names	SNSR4; MRGX1; MGRG2; Sensory neuron-specific G-protein coupled receptor 3/4; GPCR; Mas-related G-protein coupled receptor member X1

### Application Instructions

Application table	Application	Dilution
	ICC/IF	1:200 - 1:1000
	WB	1:500 - 1:2000
Application Note	* The dilutions indicate recommended starting dilutions and the optimal dilutions or concentrations should be determined by the scientist.	
Observed Size	~ 36 kDa	

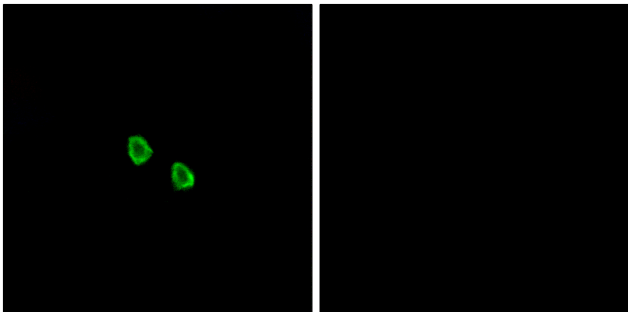
### Properties

Form	Liquid
Purification	Affinity purification with immunogen.
Buffer	PBS, 0.02% Sodium azide, 50% Glycerol and 0.5% BSA.
Preservative	0.02% Sodium azide
Stabilizer	50% Glycerol and 0.5% BSA
Concentration	1 mg/ml
Storage instruction	For continuous use, store undiluted antibody at 2-8°C for up to a week. For long-term storage, aliquot and store at -20°C. Storage in frost free freezers is not recommended. Avoid repeated freeze/thaw cycles. Suggest spin the vial prior to opening. The antibody solution should be gently mixed before use.
Note	For laboratory research only, not for drug, diagnostic or other use.

Bioinformation

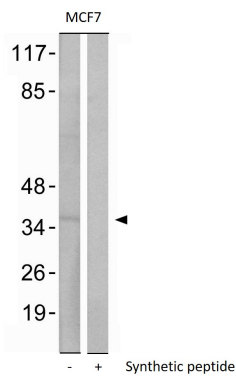
Gene Symbol	MRGPRX1
Gene Full Name	MAS-related GPR, member X1
Function	Orphan receptor. Probably involved in the function of nociceptive neurons. May regulate nociceptor function and/or development, including the sensation or modulation of pain. Potently activated by enkephalins including BAM22 (bovine adrenal medulla peptide 22) and BAM (8-22). BAM22 is the most potent compound and evoked a large and dose-dependent release of intracellular calcium in stably transfected cells. G(alpha)q proteins are involved in the calcium-signaling pathway. Activated by the antimalarial drug, chloroquine. May mediate chloroquine-induced itch, in a histamine-independent manner. [UniProt]
Calculated Mw	36 kDa
Cellular Localization	Cell membrane; Multi-pass membrane protein. [UniProt]

Images



ARG66442 anti-MRGPRX1 / MRGX1 antibody ICC/IF image

Immunofluorescence: HepG2 cells stained with ARG66442 anti-MRGPRX1 / MRGX1 antibody. The picture on the right is blocked with the synthetic peptide.



ARG66442 anti-MRGPRX1 / MRGX1 antibody WB image

Western blot: MCF7 cell lysate stained with ARG66442 anti-MRGPRX1 / MRGX1 antibody. The lane on the right is blocked with the synthetic peptide.