

ARG66445 anti-MKI67IP / NIFK antibody

Package: 100 µl
Store at: -20°C

Summary

Product Description	Rabbit Polyclonal antibody recognizes MKI67IP / NIFK
Tested Reactivity	Hu
Tested Application	ICC/IF, IHC-P, WB
Host	Rabbit
Clonality	Polyclonal
Isotype	IgG
Target Name	MKI67IP / NIFK
Species	Human
Immunogen	KLH-conjugated synthetic peptide within the center region of Human MKI67IP.
Conjugation	Un-conjugated
Alternate Names	MKI67 FHA domain-interacting nucleolar phosphoprotein; Nucleolar phosphoprotein Nopp34; Nucleolar protein interacting with the FHA domain of pKI-67; Nopp34; MKI67IP; hNIFK

Application Instructions

Application table	Application	Dilution
	ICC/IF	1:100 - 1:500
	IHC-P	1:100 - 1:200
	WB	1:500 - 1:1000
Application Note	IHC-P: Antigen Retrieval: Heat mediation was performed in Sodium citrate buffer (pH 6.0). * The dilutions indicate recommended starting dilutions and the optimal dilutions or concentrations should be determined by the scientist.	
Observed Size	~ 35 kDa	

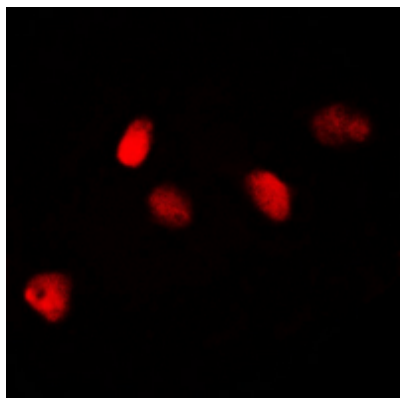
Properties

Form	Liquid
Purification	Affinity purification with immunogen.
Buffer	0.42% Potassium phosphate (pH 7.3), 0.87% NaCl, 0.01% Sodium azide and 30% Glycerol.
Preservative	0.01% Sodium azide
Stabilizer	30% Glycerol
Storage instruction	For continuous use, store undiluted antibody at 2-8°C for up to a week. For long-term storage, aliquot and store at -20°C. Storage in frost free freezers is not recommended. Avoid repeated freeze/thaw cycles. Suggest spin the vial prior to opening. The antibody solution should be gently mixed before use.

Bioinformation

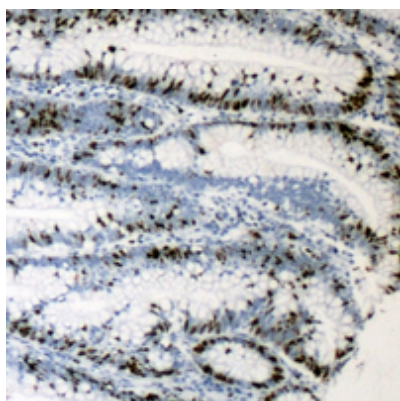
Gene Symbol	NIFK
Gene Full Name	nucleolar protein interacting with the FHA domain of MKI67
Background	This gene encodes a protein that interacts with the forkhead-associated domain of the Ki-67 antigen. The encoded protein may bind RNA and may play a role in mitosis and cell cycle progression. Multiple pseudogenes exist on chromosomes 5, 10, 12, 15, and 19.[provided by RefSeq, Jan 2009]
Calculated Mw	34 kDa
PTM	Sequentially phosphorylated on Thr-238, Thr-234 and Ser-230. Thr-234 is phosphorylated only when Thr-238 is phosphorylated. Likewise, phosphorylation at Ser-230 requires that Thr-234 and Thr-238 are phosphorylated. Phosphorylation enhances MKI67 binding. [UniProt]
Cellular Localization	Nucleus, nucleolus. Chromosome. Note=Localizes to mitotic chromosomes in conjunction with MKI67. [UniProt]

Images



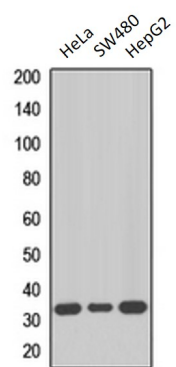
ARG66445 anti-MKI67IP / NIFK antibody ICC/IF image

Immunofluorescence: Formalin-fixed HeLa cells were permeabilized with 0.1% Triton X-100 in TBS for 5-10 minutes and blocked with 3% BSA-PBS for 30 minutes at room temperature. Cells were stained with ARG66445 anti-MKI67IP / NIFK antibody (red) in 3% BSA-PBS and incubated overnight at 4°C in a humidified chamber.



ARG66445 anti-MKI67IP / NIFK antibody IHC-P image

Immunohistochemistry: Formalin-fixed and paraffin-embedded Human colon cancer tissue. Antigen Retrieval: Heat mediation was performed in Sodium citrate buffer (pH 6.0). The section was then stained with ARG66445 anti-MKI67IP / NIFK antibody at RT. The section was counterstained with haematoxylin and mounted with DPX.



ARG66445 anti-MKI67IP / NIK antibody WB image

Western blot: HeLa, SW480 and HepG2 whole cell lysates stained with ARG66445 anti-MKI67IP / NIK antibody.