

ARG66453 anti-LIPC antibody

Package: 100 µl
Store at: -20°C

Summary

Product Description	Rabbit Polyclonal antibody recognizes LIPC
Tested Reactivity	Hu, Ms, Rat
Tested Application	IHC-P, WB
Host	Rabbit
Clonality	Polyclonal
Isotype	IgG
Target Name	LIPC
Species	Human
Immunogen	KLH-conjugated synthetic peptide within the center region of Human LIPC.
Conjugation	Un-conjugated
Alternate Names	HTGL; Lipase member C; HL; Hepatic lipase; Hepatic triacylglycerol lipase; LIPH; HDLCQ12; EC 3.1.1.3

Application Instructions

Application table	Application	Dilution
	IHC-P	1:100 - 1:200
	WB	1:500 - 1:1000
Application Note	IHC-P: Antigen Retrieval: Heat mediation was performed in Sodium citrate buffer (pH 6.0). * The dilutions indicate recommended starting dilutions and the optimal dilutions or concentrations should be determined by the scientist.	

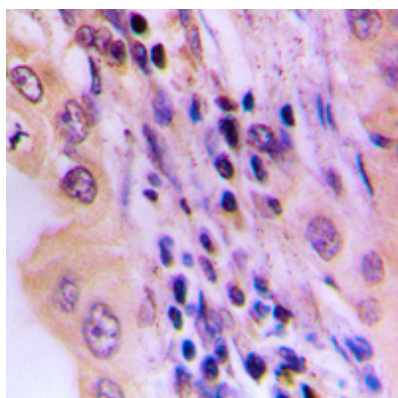
Properties

Form	Liquid
Purification	Affinity purification with immunogen.
Buffer	0.42% Potassium phosphate (pH 7.3), 0.87% NaCl, 0.01% Sodium azide and 30% Glycerol.
Preservative	0.01% Sodium azide
Stabilizer	30% Glycerol
Storage instruction	For continuous use, store undiluted antibody at 2-8°C for up to a week. For long-term storage, aliquot and store at -20°C. Storage in frost free freezers is not recommended. Avoid repeated freeze/thaw cycles. Suggest spin the vial prior to opening. The antibody solution should be gently mixed before use.
Note	For laboratory research only, not for drug, diagnostic or other use.

Bioinformation

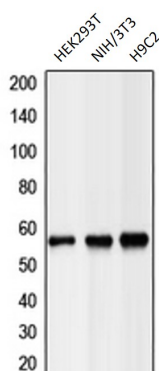
Gene Symbol	LIPC
Gene Full Name	lipase, hepatic
Background	LIPC encodes hepatic triglyceride lipase, which is expressed in liver. LIPC has the dual functions of triglyceride hydrolase and ligand/bridging factor for receptor-mediated lipoprotein uptake. [provided by RefSeq, Jul 2008]
Function	Hepatic lipase has the capacity to catalyze hydrolysis of phospholipids, mono-, di-, and triglycerides, and acyl-CoA thioesters. It is an important enzyme in HDL metabolism. Hepatic lipase binds heparin. [UniProt]
Calculated Mw	56 kDa
Cellular Localization	Secreted. [UniProt]

Images



ARG66453 anti-LIPC antibody IHC-P image

Immunohistochemistry: Formalin-fixed and paraffin-embedded Human lung cancer. Antigen Retrieval: Heat mediation was performed in Sodium citrate buffer (pH 6.0). The section was then incubated with ARG66453 anti-LIPC antibody at room temperature and detected using an HRP conjugated compact polymer system. DAB was used as the chromogen. The section was then counterstained with haematoxylin and mounted with DPX.



ARG66453 anti-LIPC antibody WB image

Western blot: HEK293T, NIH/3T3 and H9C2 whole cell lysates stained with ARG66453 anti-LIPC antibody.