

ARG66497 anti-GLUT1 antibody

Package: 100 µl
Store at: -20°C

Summary

Product Description	Mouse Monoclonal antibody recognizes GLUT1
Tested Reactivity	Hu
Tested Application	IHC-P
Host	Mouse
Clonality	Monoclonal
Isotype	IgG2a, kappa
Target Name	GLUT1
Species	Human
Immunogen	Synthetic peptide derived from Human GLUT1.
Conjugation	Un-conjugated
Alternate Names	DYT17; HepG2 glucose transporter; CSE; GLUT-1; GLUT; GLUT1DS; DYT18; HTLVR; PED; Glucose transporter type 1, erythrocyte/brain; DYT9; EIG12; GLUT1; Solute carrier family 2, facilitated glucose transporter member 1

Application Instructions

Application table	<table> <tr> <th>Application</th><th>Dilution</th></tr> <tr> <td>IHC-P</td><td>1:100 - 1:500</td></tr> </table>	Application	Dilution	IHC-P	1:100 - 1:500
Application	Dilution				
IHC-P	1:100 - 1:500				
Application Note	<p>IHC-P: Antigen Retrieval: Tris/EDTA buffer (pH 8.0) was used.</p> <p>* The dilutions indicate recommended starting dilutions and the optimal dilutions or concentrations should be determined by the scientist.</p>				

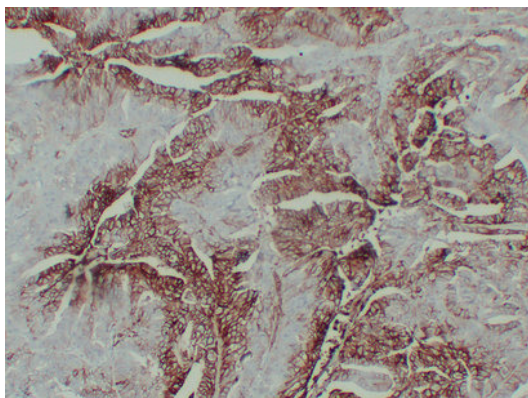
Properties

Form	Liquid
Purification	Affinity purification with immunogen.
Buffer	PBS, 0.02% Sodium azide, 50% Glycerol and 0.5% BSA.
Preservative	0.02% Sodium azide
Stabilizer	50% Glycerol and 0.5% BSA
Concentration	1 mg/ml
Storage instruction	For continuous use, store undiluted antibody at 2-8°C for up to a week. For long-term storage, aliquot and store at -20°C. Storage in frost free freezers is not recommended. Avoid repeated freeze/thaw cycles. Suggest spin the vial prior to opening. The antibody solution should be gently mixed before use.
Note	For laboratory research only, not for drug, diagnostic or other use.

Bioinformation

Gene Symbol	SLC2A1
Gene Full Name	solute carrier family 2 (facilitated glucose transporter), member 1
Background	This gene encodes a major glucose transporter in the mammalian blood-brain barrier. The encoded protein is found primarily in the cell membrane and on the cell surface, where it can also function as a receptor for human T-cell leukemia virus (HTLV) I and II. Mutations in this gene have been found in a family with paroxysmal exertion-induced dyskinesia. [provided by RefSeq, Apr 2013]
Function	Facilitative glucose transporter. This isoform may be responsible for constitutive or basal glucose uptake. Has a very broad substrate specificity; can transport a wide range of aldoses including both pentoses and hexoses. [UniProt]
Calculated Mw	54 kDa
Cellular Localization	Cell membrane; Multi-pass membrane protein. Melanosome. Note=Localizes primarily at the cell surface. Identified by mass spectrometry in melanosome fractions from stage I to stage IV. [UniProt]

Images



ARG66497 anti-GLUT1 antibody IHC-P image

Immunohistochemistry: Paraffin-embedded Human colon carcinoma stained with ARG66497 anti-GLUT1 antibody at 1:200 (4°C, overnight). Antigen Retrieval: Tris/EDTA buffer (pH 8.0) was used.