

**ARG66509**  
**anti-TCL1 antibody**Package: 100 µl  
Store at: -20°C

### Summary

Product Description	Mouse Monoclonal antibody recognizes TCL1
Tested Reactivity	Hu
Tested Application	IHC-P
Host	Mouse
Clonality	Monoclonal
Isotype	IgG1, kappa
Target Name	TCL1
Species	Human
Immunogen	Synthetic peptide derived from Human TCL1.
Conjugation	Un-conjugated
Alternate Names	Protein p14 TCL1; Oncogene TCL1; T-cell leukemia/lymphoma protein 1A; TCL1; Oncogene TCL-1

### Application Instructions

Application table	Application	Dilution
	IHC-P	1:100 - 1:500
Application Note	IHC-P: Antigen Retrieval: Citric acid buffer (pH 6.0) was used. * The dilutions indicate recommended starting dilutions and the optimal dilutions or concentrations should be determined by the scientist.	

### Properties

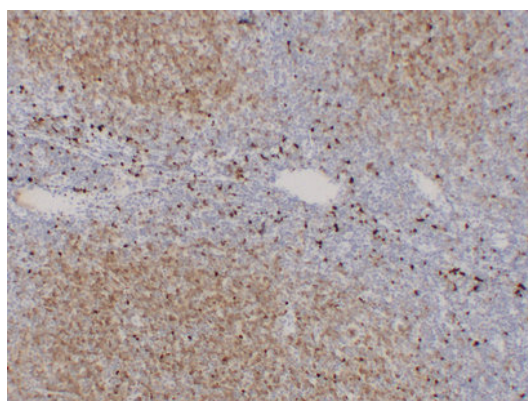
Form	Liquid
Purification	Affinity purification with immunogen.
Buffer	PBS, 0.02% Sodium azide, 50% Glycerol and 0.5% BSA.
Preservative	0.02% Sodium azide
Stabilizer	50% Glycerol and 0.5% BSA
Concentration	1 mg/ml
Storage instruction	For continuous use, store undiluted antibody at 2-8°C for up to a week. For long-term storage, aliquot and store at -20°C. Storage in frost free freezers is not recommended. Avoid repeated freeze/thaw cycles. Suggest spin the vial prior to opening. The antibody solution should be gently mixed before use.
Note	For laboratory research only, not for drug, diagnostic or other use.

### Bioinformation

Gene Symbol	TCL1A
Gene Full Name	T-cell leukemia/lymphoma 1A
Background	Overexpression of the TCL1 gene in humans has been implicated in the development of mature T cell leukemia, in which chromosomal rearrangements bring the TCL1 gene in close proximity to the T-cell antigen receptor (TCR)-alpha (MIM 186880) or TCR-beta (MIM 186930) regulatory elements (summarized by Virgilio et al., 1998 [PubMed 9520462]). In normal T cells TCL1 is expressed in CD4-/CD8- cells, but not in cells at later stages of differentiation. TCL1 functions as a coactivator of the cell survival kinase AKT (MIM 164730) (Laine et al., 2000 [PubMed 10983986]).[supplied by OMIM, Jul 2010]
Function	Enhances the phosphorylation and activation of AKT1, AKT2 and AKT3. Promotes nuclear translocation of AKT1. Enhances cell proliferation, stabilizes mitochondrial membrane potential and promotes cell survival. [UniProt]
Calculated Mw	13 kDa
Cellular Localization	Cytoplasm. Nucleus. Microsome. Endoplasmic reticulum. Note=Microsomal fraction. [UniProt]

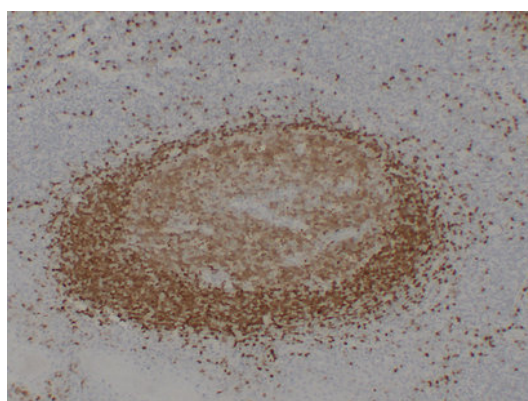
## Images

---



ARG66509 anti-TCL1 antibody IHC-P image

Immunohistochemistry: Paraffin-embedded Human follicular lymphoma stained with ARG66509 anti-TCL1 antibody at 1:200 (4°C, overnight). Antigen Retrieval: Citric acid buffer (pH 6.0) was used.



ARG66509 anti-TCL1 antibody IHC-P image

Immunohistochemistry: Paraffin-embedded Human tonsil stained with ARG66509 anti-TCL1 antibody at 1:200 (4°C, overnight). Antigen Retrieval: Citric acid buffer (pH 6.0) was used.