

ARG66517 anti-GCDFP15 antibody

Package: 100 µl
Store at: -20°C

Summary

Product Description	Mouse Monoclonal antibody recognizes GCDFP15
Tested Reactivity	Hu
Tested Application	IHC-P
Host	Mouse
Clonality	Monoclonal
Isotype	IgG1, kappa
Target Name	GCDFP15
Species	Human
Immunogen	Synthetic peptide derived from Human GCDFP15.
Conjugation	Un-conjugated
Alternate Names	Prolactin-inducible protein; GCDFP-15; Prolactin-induced protein; gp17; SABP; Secretory actin-binding protein; GCDFP15; Gross cystic disease fluid protein 15; GPI4

Application Instructions

Application table	Application	Dilution
	IHC-P	1:100 - 1:500
Application Note	IHC-P: Antigen Retrieval: Tris/EDTA buffer (pH 8.0) was used. * The dilutions indicate recommended starting dilutions and the optimal dilutions or concentrations should be determined by the scientist.	

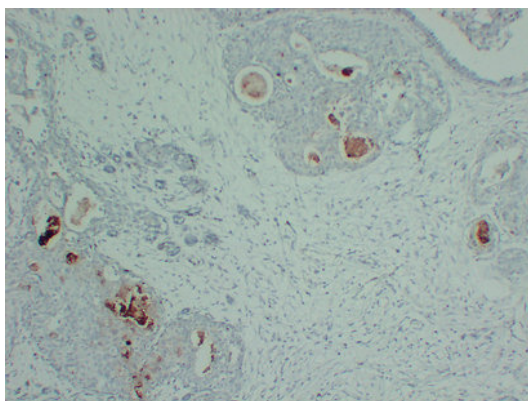
Properties

Form	Liquid
Purification	Affinity purification with immunogen.
Buffer	PBS, 0.02% Sodium azide, 50% Glycerol and 0.5% BSA.
Preservative	0.02% Sodium azide
Stabilizer	50% Glycerol and 0.5% BSA
Concentration	1 mg/ml
Storage instruction	For continuous use, store undiluted antibody at 2-8°C for up to a week. For long-term storage, aliquot and store at -20°C. Storage in frost free freezers is not recommended. Avoid repeated freeze/thaw cycles. Suggest spin the vial prior to opening. The antibody solution should be gently mixed before use.
Note	For laboratory research only, not for drug, diagnostic or other use.

Bioinformation

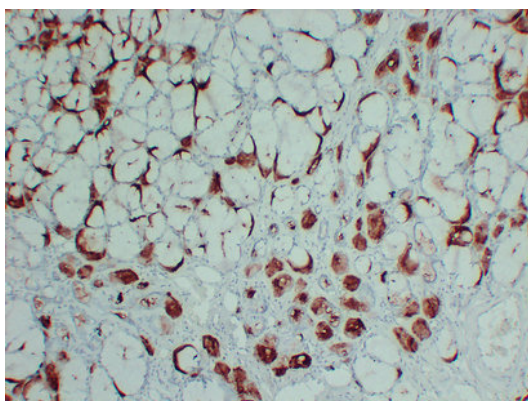
Gene Symbol	PIP
Gene Full Name	prolactin-induced protein
Calculated Mw	17 kDa
Cellular Localization	Secreted. [UniProt]

Images



ARG66517 anti-GCDFP15 antibody IHC-P image

Immunohistochemistry: Paraffin-embedded Human breast carcinoma stained with ARG66517 anti-GCDFP15 antibody at 1:200 (4°C, overnight). Antigen Retrieval: Tris/EDTA buffer (pH 8.0) was used.



ARG66517 anti-GCDFP15 antibody IHC-P image

Immunohistochemistry: Paraffin-embedded Human salivary gland stained with ARG66517 anti-GCDFP15 antibody at 1:200 (4°C, overnight). Antigen Retrieval: Tris/EDTA buffer (pH 8.0) was used.



ARG66517 anti-GCDFP15 antibody IHC-P image

Immunohistochemistry: Paraffin-embedded Human skin stained with ARG66517 anti-GCDFP15 antibody at 1:200 (4°C, overnight). Antigen Retrieval: Tris/EDTA buffer (pH 8.0) was used.