

ARG66526 anti-ADCY1 antibody

Package: 100 µg
Store at: -20°C

Summary

Product Description	Rabbit Polyclonal antibody recognizes ADCY1
Tested Reactivity	Hu
Predict Reactivity	Ms
Tested Application	WB
Host	Rabbit
Clonality	Polyclonal
Isotype	IgG
Target Name	ADCY1
Species	Human
Immunogen	Synthetic peptide within aa. 200-280 of Human ADCY1.
Conjugation	Un-conjugated
Alternate Names	Adenylate cyclase type I; Ca; AC1; DFNB44; ATP pyrophosphate-lyase 1; EC 4.6.1.1; Adenylyl cyclase 1; Adenylate cyclase type 1; 2+

Application Instructions

Application table	Application	Dilution
	WB	1:500 - 1:2000
Application Note	* The dilutions indicate recommended starting dilutions and the optimal dilutions or concentrations should be determined by the scientist.	
Observed Size	130 kDa	

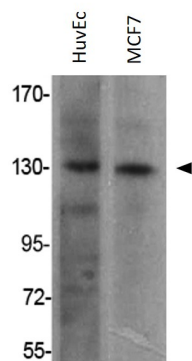
Properties

Form	Liquid
Purification	Affinity purification with immunogen.
Buffer	PBS, 0.02% Sodium azide, 50% Glycerol and 0.5% BSA.
Preservative	0.02% Sodium azide
Stabilizer	50% Glycerol and 0.5% BSA
Concentration	1 mg/ml
Storage instruction	For continuous use, store undiluted antibody at 2-8°C for up to a week. For long-term storage, aliquot and store at -20°C. Storage in frost free freezers is not recommended. Avoid repeated freeze/thaw cycles. Suggest spin the vial prior to opening. The antibody solution should be gently mixed before use.
Note	For laboratory research only, not for drug, diagnostic or other use.

Bioinformation

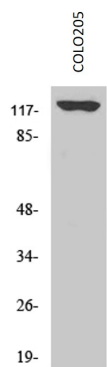
Gene Symbol	ADCY1
Gene Full Name	adenylate cyclase 1 (brain)
Background	This gene encodes a member of the of adenylate cyclase gene family that is primarily expressed in the brain. This protein is regulated by calcium/calmodulin concentration and may be involved in brain development. Alternate splicing results in multiple transcript variants. [provided by RefSeq, Aug 2013]
Function	This is a calmodulin-sensitive adenylyl cyclase. May be involved in regulatory processes in the central nervous system. It may play a role in memory acquisition and learning. Plays a role in the regulation of the circadian rhythm of daytime contrast sensitivity probably by modulating the rhythmic synthesis of cyclic AMP in the retina (By similarity). [UniProt]
Calculated Mw	123 kDa
PTM	N-glycosylated. [UniProt]
Cellular Localization	Membrane; Multi-pass membrane protein. Cell membrane; Multi-pass membrane protein. Cytoplasm. Membrane raft. Note=Expressed in the cytoplasm of supporting cells and hair cells of the cochlea vestibule, as well as to the cochlear hair cell nuclei and stereocilia. [UniProt]

Images



ARG66526 anti-ADCY1 antibody WB image

Western blot: HuvEc and MCF7 cell lysates stained with ARG66526 anti-ADCY1 antibody.



ARG66526 anti-ADCY1 antibody WB image

Western blot: COLO205 cell lysate stained with ARG66526 anti-ADCY1 antibody.