

## ARG66531 anti-ADCY1 antibody

Package: 100 µl  
Store at: -20°C

### Summary

Product Description	Rabbit Polyclonal antibody recognizes ADCY1
Tested Reactivity	Hu
Predict Reactivity	Ms, Rat, Bov
Tested Application	IHC-P
Host	Rabbit
Clonality	Polyclonal
Isotype	IgG
Target Name	ADCY1
Species	Human
Immunogen	KLH-conjugated synthetic peptide around the center region of Human ADCY1.
Conjugation	Un-conjugated
Alternate Names	Adenylate cyclase type I; Ca; AC1; DFN44; ATP pyrophosphate-lyase 1; EC 4.6.1.1; Adenyl cyclase 1; Adenylate cyclase type 1; 2+

### Application Instructions

Application table	Application	Dilution
	IHC-P	1:100 - 1:200
Application Note	IHC-P: Antigen Retrieval: Heat mediation was performed in Sodium citrate buffer (pH 6.0). * The dilutions indicate recommended starting dilutions and the optimal dilutions or concentrations should be determined by the scientist.	

### Properties

Form	Liquid
Purification	Affinity purification with immunogen.
Buffer	0.42% Potassium phosphate (pH 7.3), 0.87% NaCl, 0.01% Sodium azide and 30% Glycerol.
Preservative	0.01% Sodium azide
Stabilizer	30% Glycerol
Storage instruction	For continuous use, store undiluted antibody at 2-8°C for up to a week. For long-term storage, aliquot and store at -20°C. Storage in frost free freezers is not recommended. Avoid repeated freeze/thaw cycles. Suggest spin the vial prior to opening. The antibody solution should be gently mixed before use.
Note	For laboratory research only, not for drug, diagnostic or other use.

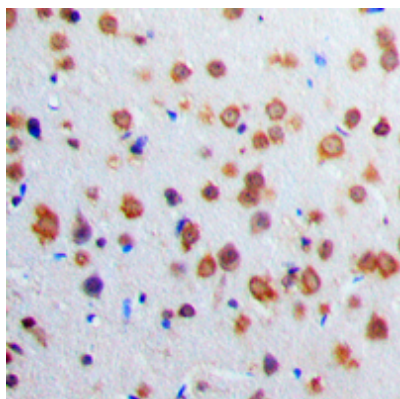
## Bioinformation

---

Gene Symbol	ADCY1
Gene Full Name	adenylate cyclase 1 (brain)
Background	This gene encodes a member of the of adenylate cyclase gene family that is primarily expressed in the brain. This protein is regulated by calcium/calmodulin concentration and may be involved in brain development. Alternate splicing results in multiple transcript variants. [provided by RefSeq, Aug 2013]
Function	This is a calmodulin-sensitive adenylyl cyclase. May be involved in regulatory processes in the central nervous system. It may play a role in memory acquisition and learning. Plays a role in the regulation of the circadian rhythm of daytime contrast sensitivity probably by modulating the rhythmic synthesis of cyclic AMP in the retina (By similarity). [UniProt]
Calculated Mw	123 kDa
PTM	N-glycosylated. [UniProt]
Cellular Localization	Membrane; Multi-pass membrane protein. Cell membrane; Multi-pass membrane protein. Cytoplasm. Membrane raft. Note=Expressed in the cytoplasm of supporting cells and hair cells of the cochlea vestibule, as well as to the cochlear hair cell nuclei and stereocilia. [UniProt]

## Images

---



ARG66531 anti-ADCY1 antibody IHC-P image

Immunohistochemistry: Formalin-fixed and paraffin-embedded Human brain tissue. Antigen Retrieval: Heat mediation was performed in Sodium citrate buffer (pH 6.0). The section was then stained with ARG66531 anti-ADCY1 antibody at room temperature and detected using an HRP conjugated compact polymer system. DAB was used as the chromogen. The section was then counterstained with haematoxylin and mounted with DPX.