

ARG66569 anti-Claudin 7 antibody

Package: 100 µl
Store at: -20°C

Summary

Product Description	Mouse Monoclonal antibody recognizes Claudin 7
Tested Reactivity	Hu
Tested Application	IHC-P, WB
Host	Mouse
Clonality	Monoclonal
Isotype	IgG2a, kappa
Target Name	Claudin 7
Species	Human
Immunogen	Synthetic peptide derived from Human Claudin 7.
Conjugation	Un-conjugated
Alternate Names	Claudin-7; CEPTRL2; claudin-1; CPETRL2; CLDN-7; Hs.84359

Application Instructions

Application table	Application	Dilution
	IHC-P	1:100 - 1:500
	WB	1:500 - 1:2000
Application Note	IHC-P: Antigen Retrieval: Boil tissue section in Citrate buffer (pH 6.0). * The dilutions indicate recommended starting dilutions and the optimal dilutions or concentrations should be determined by the scientist.	
Observed Size	~ 20 kDa	

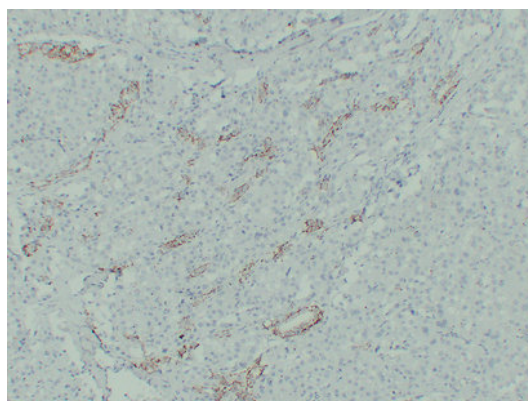
Properties

Form	Liquid
Purification	Affinity purification with immunogen.
Buffer	PBS, 0.02% Sodium azide, 50% Glycerol and 0.5% BSA.
Preservative	0.02% Sodium azide
Stabilizer	50% Glycerol and 0.5% BSA
Concentration	1 mg/ml
Storage instruction	For continuous use, store undiluted antibody at 2-8°C for up to a week. For long-term storage, aliquot and store at -20°C. Storage in frost free freezers is not recommended. Avoid repeated freeze/thaw cycles. Suggest spin the vial prior to opening. The antibody solution should be gently mixed before use.
Note	For laboratory research only, not for drug, diagnostic or other use.

Bioinformation

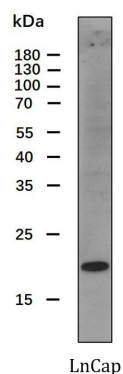
Gene Symbol	CLDN7
Gene Full Name	claudin 7
Background	This gene encodes a member of the claudin family. Claudins are integral membrane proteins and components of tight junction strands. Tight junction strands serve as a physical barrier to prevent solutes and water from passing freely through the paracellular space between epithelial or endothelial cell sheets, and also play critical roles in maintaining cell polarity and signal transductions. Differential expression of this gene has been observed in different types of malignancies, including breast cancer, ovarian cancer, hepatocellular carcinomas, urinary tumors, prostate cancer, lung cancer, head and neck cancers, thyroid carcinomas, etc.. Alternatively spliced transcript variants encoding different isoforms have been found.[provided by RefSeq, May 2010]
Function	Plays a major role in tight junction-specific obliteration of the intercellular space. [UniProt]
Calculated Mw	22 kDa
PTM	Phosphorylated. [UniProt]
Cellular Localization	Cell membrane; Multi-pass membrane protein. Basolateral cell membrane. Cell junction, tight junction. Note=Co-localizes with EPCAM at the basolateral cell membrane and tight junction. [UniProt]

Images



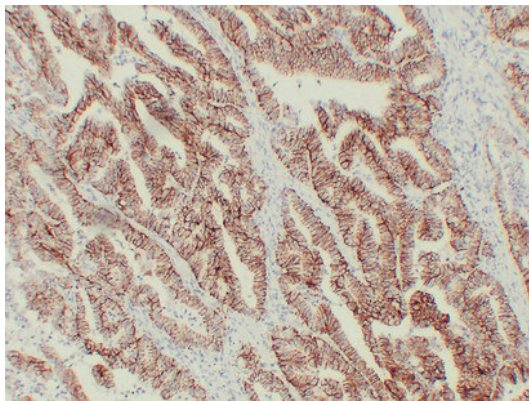
ARG66569 anti-Claudin 7 antibody IHC-P image

Immunohistochemistry: Paraffin-embedded Human chromophobe cell renal carcinoma tissue stained with ARG66569 anti-Claudin 7 antibody at 1:200 dilution (4°C, overnight). Antigen Retrieval: Boil tissue section in Citrate buffer (pH 6.0).



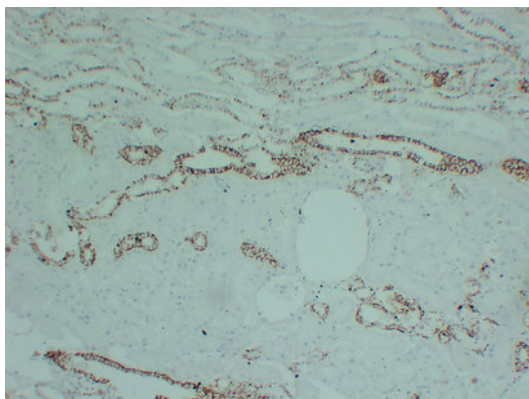
ARG66569 anti-Claudin 7 antibody WB image

Western blot: 30 µg of LnCap whole cell lysate stained with ARG66569 anti-Claudin 7 antibody at 1:1000 dilution.



ARG66569 anti-Claudin 7 antibody IHC-P image

Immunohistochemistry: Paraffin-embedded Human colon carcinoma tissue stained with ARG66569 anti-Claudin 7 antibody at 1:200 dilution (4°C, overnight). Antigen Retrieval: Boil tissue section in Citrate buffer (pH 6.0).



ARG66569 anti-Claudin 7 antibody IHC-P image

Immunohistochemistry: Paraffin-embedded Human kidney tissue stained with ARG66569 anti-Claudin 7 antibody at 1:200 dilution (4°C, overnight). Antigen Retrieval: Boil tissue section in Citrate buffer (pH 6.0).
