

## ARG66592 anti-PDLIM1 / CLP36 antibody

Package: 100 µg  
Store at: -20°C

### Summary

Product Description	Rabbit Polyclonal antibody recognizes PDLIM1 / CLP36
Tested Reactivity	Hu
Predict Reactivity	Ms, Rat
Tested Application	ICC/IF, IHC-P, WB
Host	Rabbit
Clonality	Polyclonal
Isotype	IgG
Target Name	PDLIM1 / CLP36
Species	Human
Immunogen	Synthetic peptide corresponding to aa. 30-110 of Human PDLIM1 / CLP36.
Conjugation	Un-conjugated
Alternate Names	Elfin; CLIM1; C-terminal LIM domain protein 1; hCLIM1; PDZ and LIM domain protein 1; CLP36; CLP-36; LIM domain protein CLP-36; HEL-S-112

### Application Instructions

Application table	Application	Dilution
	ICC/IF	1:200 - 1:1000
	IHC-P	1:100 - 1:300
	WB	1:500 - 1:2000
Application Note	* The dilutions indicate recommended starting dilutions and the optimal dilutions or concentrations should be determined by the scientist.	
Observed Size	36 kDa	

### Properties

Form	Liquid
Purification	Affinity purification with immunogen.
Buffer	PBS, 0.02% Sodium azide, 50% Glycerol and 0.5% BSA.
Preservative	0.02% Sodium azide
Stabilizer	50% Glycerol and 0.5% BSA
Concentration	1 mg/ml
Storage instruction	For continuous use, store undiluted antibody at 2-8°C for up to a week. For long-term storage, aliquot and store at -20°C. Storage in frost free freezers is not recommended. Avoid repeated freeze/thaw

cycles. Suggest spin the vial prior to opening. The antibody solution should be gently mixed before use.

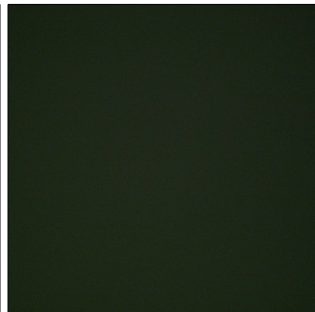
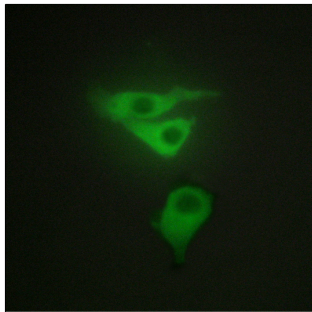
#### Note

For laboratory research only, not for drug, diagnostic or other use.

## Bioinformation

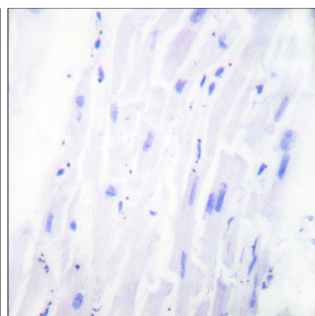
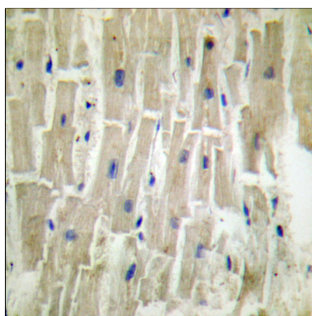
Gene Symbol	PDLIM1
Gene Full Name	PDZ and LIM domain 1
Background	This gene encodes a member of the enigma protein family. The protein contains two protein interacting domains, a PDZ domain at the amino terminal end and one to three LIM domains at the carboxyl terminal. It is a cytoplasmic protein associated with the cytoskeleton. The protein may function as an adapter to bring other LIM-interacting proteins to the cytoskeleton. Pseudogenes associated with this gene are located on chromosomes 3, 14 and 17. [provided by RefSeq, Oct 2012]
Function	Cytoskeletal protein that may act as an adapter that brings other proteins (like kinases) to the cytoskeleton. [UniProt]
Calculated Mw	36 kDa
Cellular Localization	Cytoplasm. Cytoplasm, cytoskeleton. Cytoplasm, myofibril, sarcomere, Z line. Note=Associates with actin stress fibers. [UniProt]

## Images



ARG66592 anti-PDLIM1 / CLP36 antibody ICC/IF image

Immunofluorescence: HepG2 cells stained with ARG66592 anti-PDLIM1 / CLP36 antibody. The picture on the right is blocked with the synthetic peptide.



ARG66592 anti-PDLIM1 / CLP36 antibody IHC-P image

Immunohistochemistry: Paraffin-embedded Human heart tissue stained with ARG66592 anti-PDLIM1 / CLP36 antibody. The picture on the right is blocked with the synthetic peptide.



ARG66592 anti-PDLIM1 / CLP36 antibody WB image

Western blot: K562 cell lysate stained with ARG66592 anti-PDLIM1 / CLP36 antibody at 1:1000 dilution.