

ARG66724 anti-SH3GL2 antibody

Package: 100 µl
Store at: -20°C

Summary

Product Description	Rabbit Polyclonal antibody recognizes SH3GL2
Tested Reactivity	Hu, Ms
Tested Application	WB
Host	Rabbit
Clonality	Polyclonal
Isotype	IgG
Target Name	SH3GL2
Species	Human
Immunogen	Recombinant full length protein of Human SH3GL2.
Conjugation	Un-conjugated
Alternate Names	SH3P4; SH3 domain-containing GRB2-like protein 2; EEN-B1; Endophilin-A1; CNSA2; Endophilin-1; SH3D2A; SH3 domain protein 2A

Application Instructions

Application table	<table> <tr> <th>Application</th><th>Dilution</th></tr> <tr> <td>WB</td><td>1:500 - 1:2000</td></tr> </table>	Application	Dilution	WB	1:500 - 1:2000
Application	Dilution				
WB	1:500 - 1:2000				
Application Note	* The dilutions indicate recommended starting dilutions and the optimal dilutions or concentrations should be determined by the scientist.				
Positive Control	HeLa, HepG2, Mouse brain and Mouse testis.				
Observed Size	~ 39 kDa				

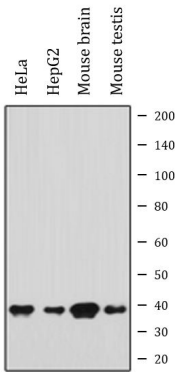
Properties

Form	Liquid
Purification	Affinity purification with immunogen.
Buffer	0.42% Potassium phosphate (pH 7.3), 0.87% NaCl, 0.01% Sodium azide and 30% Glycerol.
Preservative	0.01% Sodium azide
Stabilizer	30% Glycerol
Storage instruction	For continuous use, store undiluted antibody at 2-8°C for up to a week. For long-term storage, aliquot and store at -20°C. Storage in frost free freezers is not recommended. Avoid repeated freeze/thaw cycles. Suggest spin the vial prior to opening. The antibody solution should be gently mixed before use.
Note	For laboratory research only, not for drug, diagnostic or other use.

Bioinformation

Gene Symbol	SH3GL2
Gene Full Name	SH3-domain GRB2-like 2
Function	Implicated in synaptic vesicle endocytosis. May recruit other proteins to membranes with high curvature. Required for BDNF-dependent dendrite outgrowth. Cooperates with SH3GL2 to mediate BDNF-NTRK2 early endocytic trafficking and signaling from early endosomes. [UniProt]
Calculated Mw	40 kDa
Cellular Localization	Cytoplasm. Membrane; Peripheral membrane protein. Early endosome. Note=Concentrated in presynaptic nerve terminals in neurons. [UniProt]

Images



ARG66724 anti-SH3GL2 antibody WB image

Western blot: HeLa, HepG2, Mouse brain and Mouse testis whole cell lysates stained with ARG66724 anti-SH3GL2 antibody.